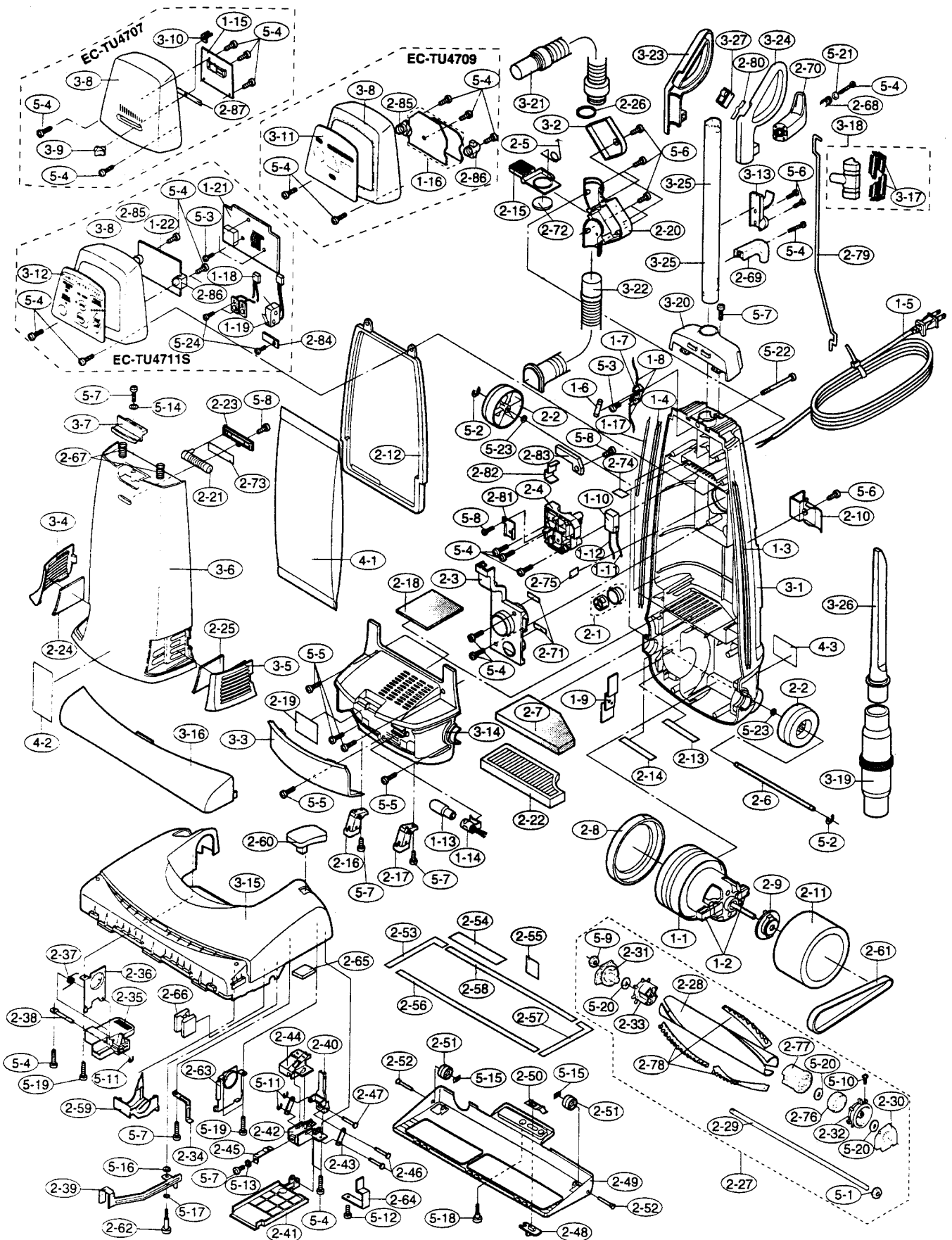


Models: EC-TU4707, EC-TU4709, EC-TU4711S, EC-TU4810



Models: EC-TU4707, EC-TU4709, EC-TU4711S, EC-TU4810

■ ELECTRICAL PARTS

1-1 S-1100 ... Motor Assembly
 1-2 S-992 Carbon Brush
 1-3 S-206 Motor Lead Wire
 1-4 S-207 Circuit Lead Wire
 1-5 S-939 Power Cord
 1-6 S-557 Fuse
 1-7 S-927 Fuse Holder
 1-8 S-993 Lead Wire, fuse holder
 1-9 S-994 Triac PWB Assy, TU4707
 1-9 S-1101 ... Triac PWB Assy, TU4711S, TU4810
 1-9 S-..... Triac PWB Assy, TU4709
 1-10 ... S-029 On/Off Switch
 1-11 ... S-1000 ... Lead Wire A
 1-12 ... S-1001 ... Lead Wire S
 1-13 ... S-209 Lamp
 1-14 ... S-1002 ... Lamp Socket
 1-15 ... S-1006 ... Power Control PWB Assy, TU4707, TU4810
 1-16 ... S-1002 ... Power Control PWB Assy, TU4709
 1-17 ... S-1103 ... Lead Wire, single, TU4711S, TU4810
 1-18 ... S-1005 ... Sensor PWB Assy, TU4711S, TU4810
 1-19 ... S-1104 ... Dust Indicator Switch Assy, TU4711S, TU4810
 1-20 ... S-1105 ... Dust Indicator Switch Assy, TU4709
 1-21 ... S-1106 ... Power Control PWB Assy, TU4711S
 1-22 ... S-1107 ... Indicate PWB Assy, TU4711S, TU4810

■ MECHANICAL PARTS

2-1 S-1007 ... Air Valve Assy
 2-2 S-178 Wheel
 2-2 S-1256 ... Wheel, TU4810
 2-3 S-1008 ... Sensor Cover
 2-4 S-1009 ... Handle Mounting Base
 2-5 S-1010 ... Valve Spring
 2-6 S-115 Wheel Shaft
 2-7 S-1011 ... Secondary Filter, TU4707
 2-7 S-1011 ... Secondary Filter, TU4709
 2-7 S-1112 ... HEPA Filter, TU4810
 2-8 S-112 Vibration Proof Rubber
 2-9 S-646 Vibration Proof Fix Rubber
 2-10 ... S-1109 ... Pipe Clamp
 2-10 ... S-1257 ... Pipe Clamp, TU4810
 2-11 ... S-570 Sound Proof Sponge
 2-12 ... S-1013 ... Body Packing
 2-13 ... S-1014 ... Seal Tape M
 2-14 ... S-1015 ... Seal Tape N
 2-15 ... S-689 Valve
 2-15 ... S-1258 ... Valve, TU4810
 2-16 ... S-1110 ... Leg Assembly TA
 2-17 ... S-1111 ... Leg Assembly TB
 2-18 ... S-1016 ... Clean Filter A
 2-19 ... S-1017 ... Reflection Plate
 2-20 ... S-1018 ... Valve Cover
 2-21 ... S-101 Dust Indicator Assy, TU4707
 2-22 ... S-1112 ... HEPA Filter, TU4711S
 2-23 ... S-1020 ... Indicator Cover, TU4707
 2-24 ... S-1021 ... HEPA Type Filter L, TU4707
 2-24 ... S-1021 ... HEPA Type Filter L, TU4709
 2-24 ... S-1113 ... Micron Filter L, TU4711S, TU4810
 2-25 ... S-1022 ... HEPA Type Filter R, TU4707
 2-25 ... S-1022 ... HEPA Type Filter R, TU4709
 2-25 ... S-1114 ... Micron Filter R, TU4711S, TU4810
 2-26 ... S-1115 ... Body P Seal
 2-27 ... S-1116 ... Agitator Assembly
 2-28 ... S-133 Agitator Pipe Assembly
 2-29 ... S-1025 ... Agitator Shaft Assembly
 2-30 ... S-1026 ... Agi-Support A Assembly
 2-31 ... S-1027 ... Agi-Support B Assembly
 2-32 ... S-139 Brush Rotor A
 2-33 ... S-140 Brush Rotor B
 2-34 ... S-1028 ... Belt Stopper 3
 2-35 ... S-1029 ... Pedal L, plastic
 2-36 ... S-1030 ... Pedal Support, metal
 2-37 ... S-1031 ... Pedal Spring
 2-38 ... S-1032 ... Pedal Shaft
 2-39 ... S-1033 ... B/C Plate Assy, welded
 2-40 ... S-1034 ... B/C Lever 2nd Assembly
 2-41 ... S-1035 ... Belt Cover L
 2-42 ... S-1036 ... B/C Lever Support
 2-43 ... S-1037 ... B/C Crank

2-44 ... S-1038 ... B/C Cam
 2-45 ... S-1039 ... B/C Spring
 2-46 ... S-1041 ... Lever Shaft
 2-47 ... S-1040 ... B/C Plate Shaft
 2-48 ... S-188 Bottom Plate Knob
 2-48 ... S-1259 ... Bottom Plate Knob, TU4810
 2-49 ... S-1042 ... Bottom Plate, metal
 2-50 ... S-148 Spring, bottom plate, knob
 2-51 ... S-1117 ... Roller
 2-52 ... S-149 Roller Shaft
 2-53 ... S-1043 ... Seal Tape T
 2-54 ... S-152 Seal Tape C
 2-55 ... S-160 Seal Tape F
 2-56 ... S-1044 ... Seal Tape H
 2-57 ... S-1045 ... Seal Tape U
 2-58 ... S-1046 ... Seal Tape R
 2-59 ... S-190 Pulley Cover
 2-59 ... S-1260 ... Pulley Cover, TU4810
 2-60 ... S-1047 ... Foot Pedal, rug/floor
 2-60 ... S-1261 ... Foot Pedal, rug/floor, TU4810
 2-61 ... S-702 Flat Belt M
 2-62 ... S-128 B/C Shaft
 2-63 ... S-1118 ... Body Support, metal
 2-63 ... S-1262 ... Body Support, metal, TU4810
 2-64 ... S-1119 ... Belt Stopper
 2-65 ... S-1050 ... Vibration-proof Rubber
 2-66 ... S-1051 ... B/C Plate Rubber
 2-67 ... S-1052 ... Clamp Spring
 2-68 ... S-213 Hanger Spring, cord
 2-69 ... S-1120 ... Lower Hanger, cord
 2-70 ... S-863 Upper Hanger
 2-71 ... S-1055 ... Seal Tape P, TU4707
 2-71 ... S-1055 ... Seal Tape P, TU4709
 2-71 ... S-1056 ... Seal Tape Z, TU4711S
 2-72 ... S-1121 ... Valve Seal
 2-73 ... S-1058 ... Seal Tape V
 2-74 ... S-1059 ... Seal Tape W
 2-75 ... S-1060 ... Seal Tape Y
 2-76 ... S-747 Idler Pulley Assy
 2-77 ... S-138 Main Pulley
 2-78 ... S-146 Brush Base Assy
 2-79 ... S-805 Switch Lod
 2-80 ... S-100 Switch Knob Spring
 2-81 ... S-748 Screw, mounting plate
 2-82 ... S-105 Actuator
 2-83 ... S-1122 ... Support, actuator
 2-84 ... S-1123 ... Switch Holder, TU4711S
 2-85 ... S-745 PWB L Holder, TU4709
 2-85 ... S-1124 ... PWB L Holder, TU4711S
 2-86 ... S-746 PWB R Holder, TU4709
 2-86 ... S-1125 ... PWB R Holder, TU4711S
 2-87 ... S-1019 ... Knob Sheet, TU4707

■ EXTERNAL PARTS

3-1 S-1061 ... Main Body
 3-1 S-1265 ... Main Body, TU4810
 3-2 S-1062 ... Valve Cover 2
 3-3 S-1063 ... Lens
 3-4 S-1126 ... Filter Cover L, TU4707
 3-4 S-1126 ... Filter Cover L, TU4709
 3-4 S-1127 ... Filter Cover L, TU4711S
 3-4 S-1266 ... Filter Cover L, TU4810
 3-5 S-1128 ... Filter Cover R, TU4707
 3-5 S-1128 ... Filter Cover R, TU4709
 3-5 S-1129 ... Filter Cover R, TU4711S
 3-5 S-1267 ... Filter Cover R, TU4810
 3-6 S-1130 ... Dust Cover, TU4707
 3-6 S-1131 ... Dust Cover, TU4709
 3-6 S-1132 ... Dust Cover, TU4711S
 3-6 S-1268 ... Dust Cover, TU4810
 3-7 S-1133 ... Clamp Knob, TU4707
 3-7 S-1133 ... Clamp Knob, TU4709
 3-7 S-1134 ... Clamp Knob, TU4711S
 3-7 S-1269 ... Clamp Knob, TU4810
 3-8 S-1135 ... Panel, TU4707
 3-8 S-1136 ... Panel, TU4709
 3-8 S-1137 ... Panel, TU4711S
 3-8 S-1270 ... Panel, TU4810
 3-9 S-604 Slide Knob
 3-10 ... S-563 Indicator Plate, TU4707
 3-11 ... S-1138 ... Decoration Plate, TU4709
 3-12 ... S-1139 ... Decoration Plate, TU4711S

S-1273 ... Decoration Plate, TU4810
 3-13 ... S-1140 ... Hose Hanger
 3-14 ... S-1141 ... Motor Cover
 3-14 ... S-1274 ... Motor Cover, TU4810
 3-14 ... S-1142 ... Motor Cover, TU4711S
 3-15 ... S-1143 ... Nozzle Head L, 14"
 3-15 ... S-1275 ... Nozzle Head L, 14", TU4810
 3-15 ... S-1144 ... Nozzle Head L, 14", TU4711S
 3-16 ... S-1078 ... Bumper L
 3-17 ... S-1145 ... Nozzle Brush W
 3-18 ... S-1146 ... Nozzle Assembly W
 3-19 ... S-1147 ... Wand Assembly, metal
 3-20 ... S-1148 ... Body Cap
 3-21 ... S-1149 ... Hose Assy, extension hose
 3-22 ... S-1084 ... Nozzle Hose, blow type
 3-23 ... S-744 Right Grip
 3-23 ... S-1276 ... Right Grip, TU4810
 3-23 ... S-1277 ... Left Grip, TU4810
 3-24 ... S-743 Left Grip
 3-25 ... S-1150 ... Handle Pipe
 3-25 ... S-1272 ... Handle Pipe, TU4810
 3-26 ... S-1088 ... Crevice Tool
 3-27 ... S-741 Switch Knob, on/off
 3-27 ... S-1271 ... Switch Knob, on/off, TU4810

■ MISCELLANEOUS

4-1 S-007 Paper Bag, 3 pack
 4-1 S-751 Paper Bag, type PU-2, ea
 4-2 S-1151 ... Feature Sticker, TU4707
 4-2 S-1151 ... Feature Sticker, TU4709
 4-2 S-1152 ... Feature Sticker, TU4711S, TU4810
 4-3 S-1153 ... Name Plate, TU4707
 4-3 S-1154 ... Name Plate, TU4709
 4-3 S-1155 ... Name Plate, TU4711S
 4-3 S-1278 ... Name Plate, TU4810
 4-4 S-1094 ... Information Card

■ SCREWS, NUTS & WASHERS

5-1 S-200 Nut
 5-2 S-643 E-ring
 5-3 S-641 Screw
 5-4 S-202 Screw
 5-5 S-203 Screw
 5-6 S-642 Screw
 5-7 S-204 Screw
 5-8 S-546 Screw
 5-9 S-199 Nut
 5-10 ... S-761 Screw
 5-11 ... S-238 E-ring
 5-12 ... S-1095 ... Special Screw, B-stopper
 5-13 ... S-1096 ... Spring Washer
 5-14 ... S-1097 ... Washer
 5-15 ... S-201 Speed Nut, roller
 5-16 ... S-233 Washer
 5-17 ... S-198 Wave Washer, B/C plate assy
 5-18 ... S-125 Special Screw
 5-19 ... S-236 Screw
 5-20 ... S-1098 ... Washer, agitator assy
 5-21 ... S-233 Washer, hanger
 5-22 ... S-1099 ... Special Screw
 5-23 ... S-197 Washer
 5-24 ... S-836 Screw, dust sensor PWB, TU4711S

**THE ONE STOP SHOP FOR
 ALL YOUR SHARP VACUUM
 CLEANER REPAIR PARTS!**

HESCO