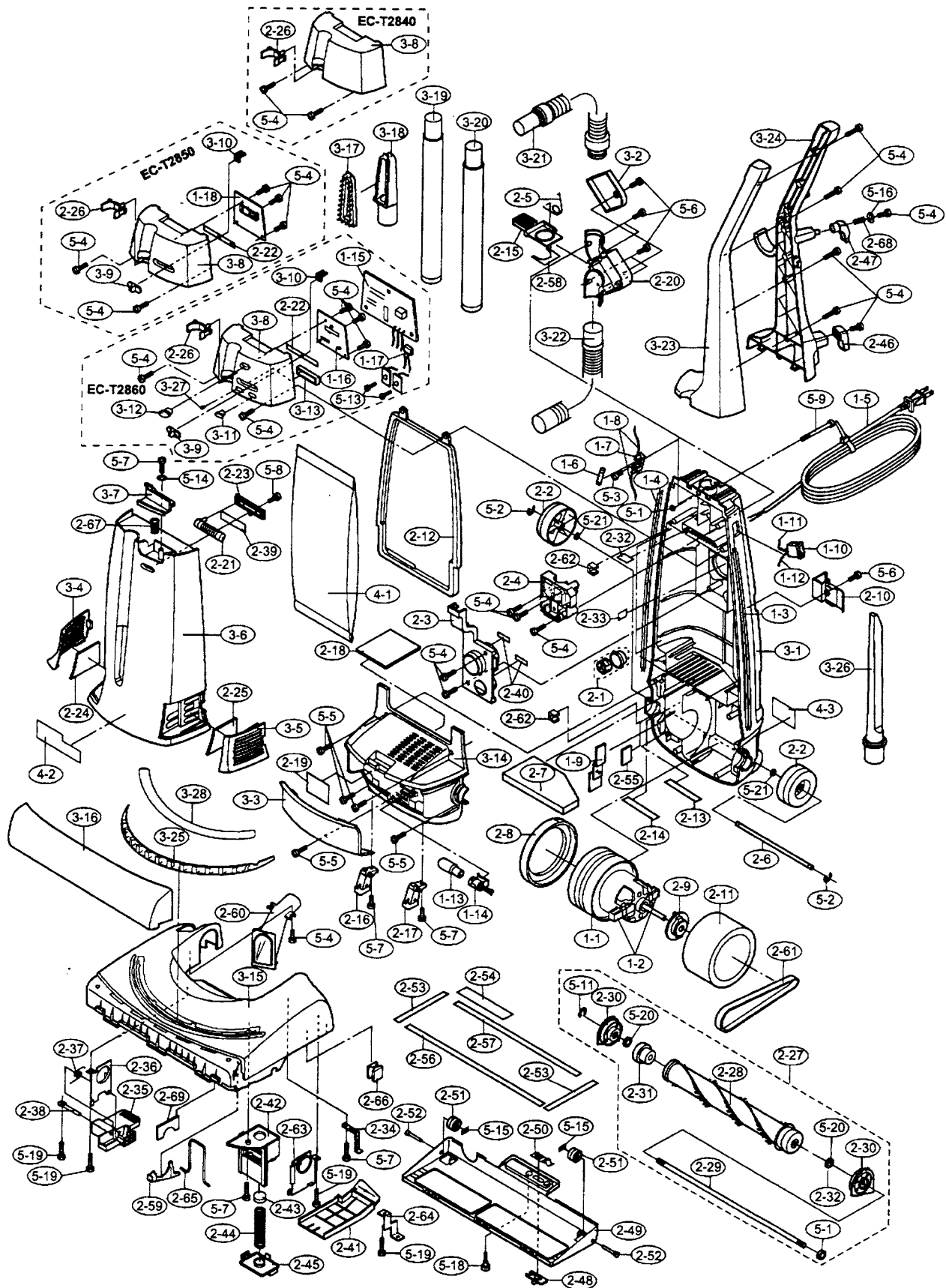


Models: EC-T2840, EC-T2850, EC-T2860



Models: EC-T2840, EC-T2850, EC-T2860

## ■ ELECTRICAL PARTS

1-1	S-991	Motor assembly
1-2	S-992	Carbon brush
1-3	S-206	Motor lead wire
1-4	NLA	Circuit lead wire, EC-T2850
1-4	NLA	Circuit lead wire, EC-T2860
1-5	S-075	Power cord, EC-T2840
1-5	S-074	Power cord, EC-T2850, EC-T2860
1-6	S-557	Fuse
1-7	S-927	Fuse holder
1-8	S-993	Lead wire, fuse holder
1-9	S-994	Triac PWB assembly, EC-T2850
1-9	S-995	Triac PWB assembly, EC-T2860
1-10	S-549	Body switch
1-11	S-1000	Lead wire A
1-12	S-1001	Lead wire S
1-13	S-209	Lamp
1-14	S-1002	Lamp socket
1-15	S-1003	Power control PWB assembly, EC-T2860
1-16	S-1004	Indicate PWB assembly, EC-T2860
1-17	S-1005	Sensor PWB assembly, EC-T2860
1-18	S-1006	Power control PWB assembly, EC-T2850

## ■ MECHANICAL PARTS

2-1	S-1108	Air valve assembly
2-2	S-178	Wheel
2-3	S-1008	Sensor cover
2-4	S-1009	Handle mounting base
2-5	S-1010	Valve spring
2-6	S-115	Wheel shaft
2-7	S-1011	Secondary filter
2-8	S-112	Vibration proof rubber
2-9	S-646	Vibration proof fixing rubber
2-10	S-1012	Pipe clamp
2-11	S-570	Sound proof sponge, motor sound
2-12	S-1013	Body packing
2-13	S-1014	Seal tape M
2-14	S-1015	Seal tape N
2-15	S-1345	Valve
2-16	S-1110	Leg assembly TA
2-17	S-1111	Leg assembly TB
2-18	S-1016	Clean filter A
2-19	S-1017	Reflection plate
2-20	S-1018	Valve cover
2-21	S-101	Dust meter assembly, EC-T2850, EC-T2860
2-22	S-1019	Knob sheet, EC-T2850, EC-T2860
2-23	S-1020	Indicator, dust meter, cover, EC-T2850, EC-T2860
2-24	S-1021	HEPA filter L
2-25	S-1022	HEPA filter R
2-26	S-1023	Panel (pipe) holder
2-27	S-1285	Agitator assembly
2-28	S-1348	Agitator rotor assembly
2-29	S-1341	Agitator shaft
2-30	S-1350	Agitator support
2-31	S-1351	Bearing holder assembly
2-32	S-1059	Seal tape W
2-33	S-1060	Seal tape Y
2-34	S-120	Belt stopper 3
2-35	S-1029	Pedal L, plastic
2-36	S-1030	Pedal support, metal
2-37	S-1031	Pedal spring
2-38	S-1032	Pedal shaft
2-39	S-1058	Seal tape V
2-40	S-1055	Seal tape P, EC-T2850
2-40	S-1056	Seal tape Z, EC-T2860
2-41	S-1293	Belt cover
2-42	S-1343	Valve case
2-43	S-1353	Head valve
2-44	S-1331	Valve spring
2-45	S-1332	Valve cover
2-46	S-1053	Lower hanger, cord
2-47	S-1054	Upper hanger
2-48	S-1259	Bottom plate knob
2-49	S-1697	Bottom plate, metal plate
2-50	S-148	Bottom plate spring, knob

2-51	S-189	Roller
2-52	S-149	Roller shaft
2-53	S-151	Seal tape B
2-54	NLA	Seal tape C
2-55	S-247	Seal tape D
2-56	S-158	Seal tape G
2-57	S-159	Seal tape E
2-58	S-1046	Seal tape R
2-59	S-1333	Head shelter
2-60	S-1334	Head pipe
2-61	S-702	Flat belt M
2-62	S-161	Body packing S
2-63	S-1262	Body support, metal
2-64	S-1049	Belt stopper
2-65	S-123	Belt guide pin
2-66	S-1230	Stopper rubber
2-67	S-1052	Clamp spring
2-68	S-213	Hanger spring, cord

## ■ EXTERNAL PARTS

3-1	S-1061	Main body
3-2	S-1062	Valve cover
3-3	S-1063	Lens
3-4	S-1064	Filter cover L
3-5	S-1065	Filter cover R
3-6	S-1067	Dust cover
3-7	S-1068	Clamp knob
3-8	S-1335	Panel, EC-T2840
3-8	S-1069	Panel, EC-T2850
3-8	S-1337	Panel, EC-T2860
3-9	S-1071	Slide knob
3-10	S-1072	indicator plate
3-11	S-1073	LED lens 1, auto ind., EC-T2860
3-12	S-1074	LED lens 2, auto ind., EC-T2860
3-13	S-1075	Knob cover, EC-T2860
3-14	S-1282	Motor cover
3-15	S-1364	Nozzle head
3-16	S-1338	Bumper L
3-17	S-1079	Brush base, brush part
3-18	S-1323	Upholstery nozzle
3-19	S-1081	Extension pipe F, front/red
3-20	S-1082	Extension pipe R, rear, gray
3-21	S-1149	Hose assembly, extension hose
3-22	S-1281	Nozzle hose, blow type
3-24	S-1086	Rear handle
3-25	S-1297	Rubber grill
3-26	S-1088	crevice tool
3-27	S-1089	Switch knob

## ■ MISCELLANEOUS

4-1	S-751	Paper bag
4-2	S-1090	Feature sticker
4-3	NLA	Name plate

## ■ SCREWS, NUTS, AND WASHERS

5-1	S-200	Nut
5-2	S-643	E-clip
5-3	S-641	Screw
5-4	S-202	Screw
5-5	S-203	Screw
5-6	S-642	Screw, black
5-7	S-204	Screw
5-8	S-546	Screw
5-9	S-199	Nut, left screw
5-10	S-761	Screw
5-11	S-238	E-ring
5-12	S-1095	Special screw, b-stopper
5-13	S-836	Screw
5-14	S-1097	Washer
5-15	S-201	Speed nut, roller
5-16	S-233	Washer, cord hanger
5-17	S-198	Wave washer, B/C plate assembly
5-18	S-125	Special screw
5-19	S-236	Screw
5-21	S-197	Washer
5-22	S-1099	Special screw