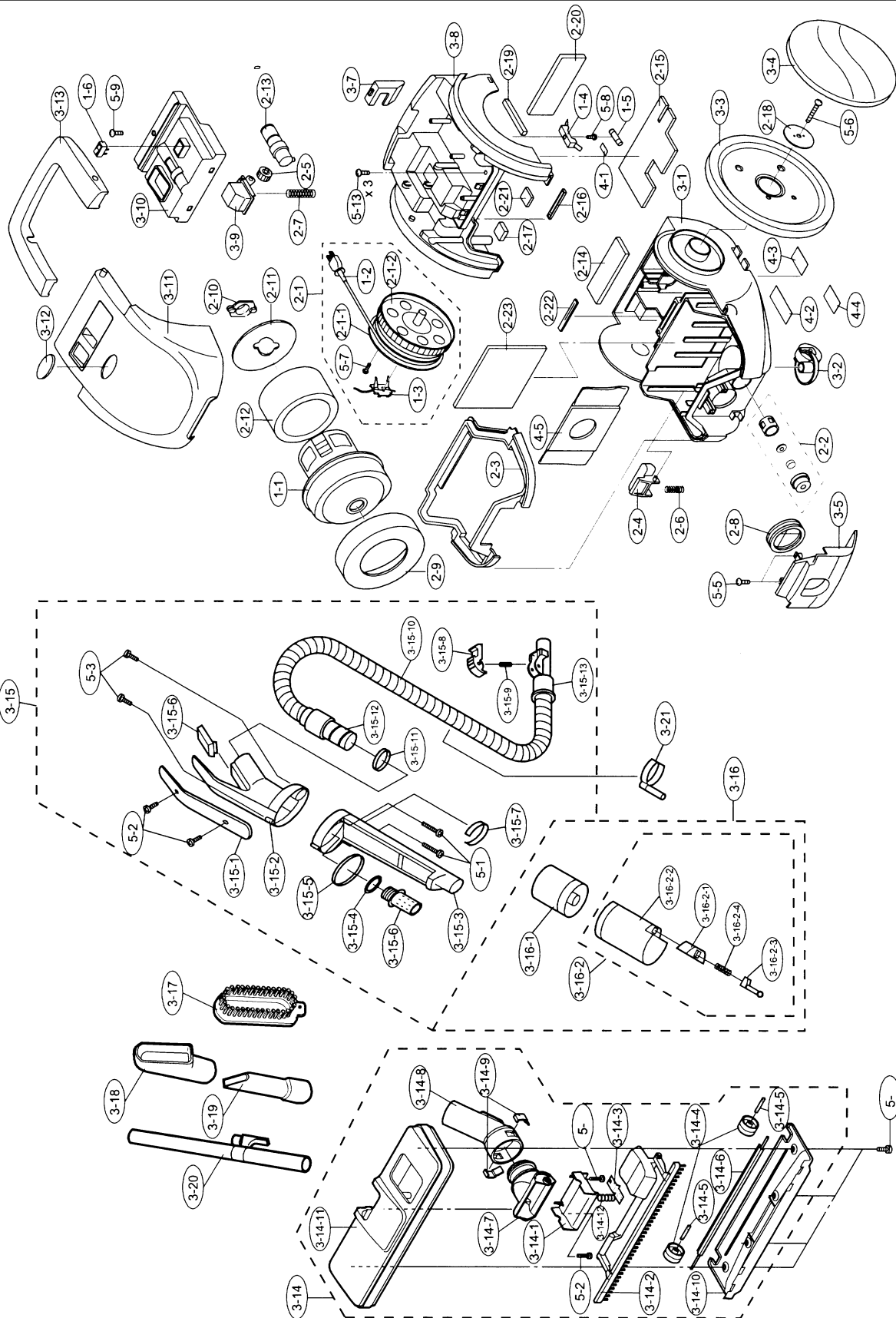


Models: EC-A50S



Models: EC-A50S

## ■ ELECTRICAL PARTS

1-1	NLA	Motor Assembly
1-2	S-1589	Power cord
1-3	S-1590	contact table assembly
1-4	S-927	Fuse holder
1-5	S-557	Fuse
1-6	S-1662	Switch

## ■ MECHANICAL PARTS

2-1	S-1591	Cord reel assembly
2-1	S-1592	Drum 1k
2-1	S-1593	Drum 2k
2-2	NLA	Air intake assembly
2-3	S-1594	Bumper
2-4	S-1595	Bag clamp
2-5	S-725	Brake roller assembly
2-6	S-1596	Bag clamp spring
2-7	S-1597	Brake button spring
2-8	S-1598	Suction packing
2-9	S-1599	Vibration proof rubber
2-10	NLA	Dust indicator assembly
2-11	S-1602	Sound proof plate
2-12	S-1601	Sound proof sponge
2-13	NLA	Dust indicator assembly
2-14	S-1602	Sound proof sponge 1
2-15	S-1603	Sound proof sponge 2
2-16	NLA	P-heat sink seal
2-17	S-1604	exhaust seal tape 2
2-18	S-1605	Wheel washer
2-19	S-1606	Exhaust seal tape 2
2-20	S-1607	Micron filter
2-21	S-1608	Exhaust seal tape 4
2-22	NLA	Upper body seal tape
2-23	S-1609	Secondary filter

## ■ EXTERNAL PARTS

3-1	S-1610	Lower body
3-2	S-1611	Caster assembly
3-3	S-1612	Wheel
3-4	S-1613	Wheel cover
3-5	S-1614	Suction mouth
3-6	S-1615	Hose holder
3-7	S-1616	cord guide
3-8	S-1617	upper body
3-9	S-1618	Brake button
3-10	S-1619	Inner panel
3-11	S-1620	case cover
3-12	S-1621	decoration plate
3-13	S-1622	handle
3-14	S-1623	A-nozzle assembly
3-14-1	S-1624	Nozzle cover
3-14-2	S-1625	Brush button
3-14-3	S-1626	Nozzle spring
3-14-4	S-1117	Roller

3-14-5	S-1212	Leg shaft
3-14-6	S-1627	Seal rubber
3-14-7	S-1628	Nozzle pipe
3-14-8	S-1629	Suction pipe
3-14-9	S-1630	Nozzle stop ring
3-14-10	S-1631	Lower nozzle
3-14-11	S-1632	Upper nozzle
3-14-12	S-1633	Nozzle spring 1
3-15	S-1634	Suction hose assembly
3-15-1	S-1635	Upper grip
3-15-2	S-1636	Lower grip
3-15-3	S-1637	Air guide duct
3-15-4	S-1638	Inner pipe packing
3-15-5	S-1639	Cup packing
3-15-6	S-1640	Inner pipe
3-15-7	S-1641	Adjust ring
3-15-8	S-1669	Body pipe button SP
3-15-9	S-1670	Body pipe button SP
3-15-10	S-1671	Suction hose
3-15-11	S-1672	Pipe packing
3-15-12	S-1673	Grip pipe
3-15-13	S-1674	Body pipe
3-15-14	S-1675	Grip cover
3-16	S-1616	Dust cup assembly
3-16-1	S-1677	Dust cup U assembly
3-16-2	S-1678	Dust cup L assembly
3-16-2-1	S-1679	Cup cover
3-16-2-2	S-1680	Cup L
3-16-2-3	S-1681	Cup button
3-16-2-4	S-1682	Cup button spring
3-17	S-1683	Nozzle brush
3-18	S-1684	Upholstery nozzle
3-19	S-1685	Crevice tool
3-20	S-1686	Extension pipe assembly

## ■ MISCELLANEOUS

4-1	S-228	Fuse label
4-2	S-1687	Caution label
4-3	S-1688	Service label
4-4	NLA	Name plate
4-5	S-9099	Paper bag

## ■ SCREWS, NUTS & WASHERS

5-1	S-1690	Special screw
5-2	S-1691	Special tap screw
5-3	S-1692	Special tap screw
5-4	S-1693	Special tap screw
5-5	S-1422	Special tap screw
5-6	S-1694	Special tap screw
5-7	S-1546	Special tap screw
5-8	NLA	Special tap screw
5-9	S-1440	Special tap screw
5-10	S-1581	Special tap screw