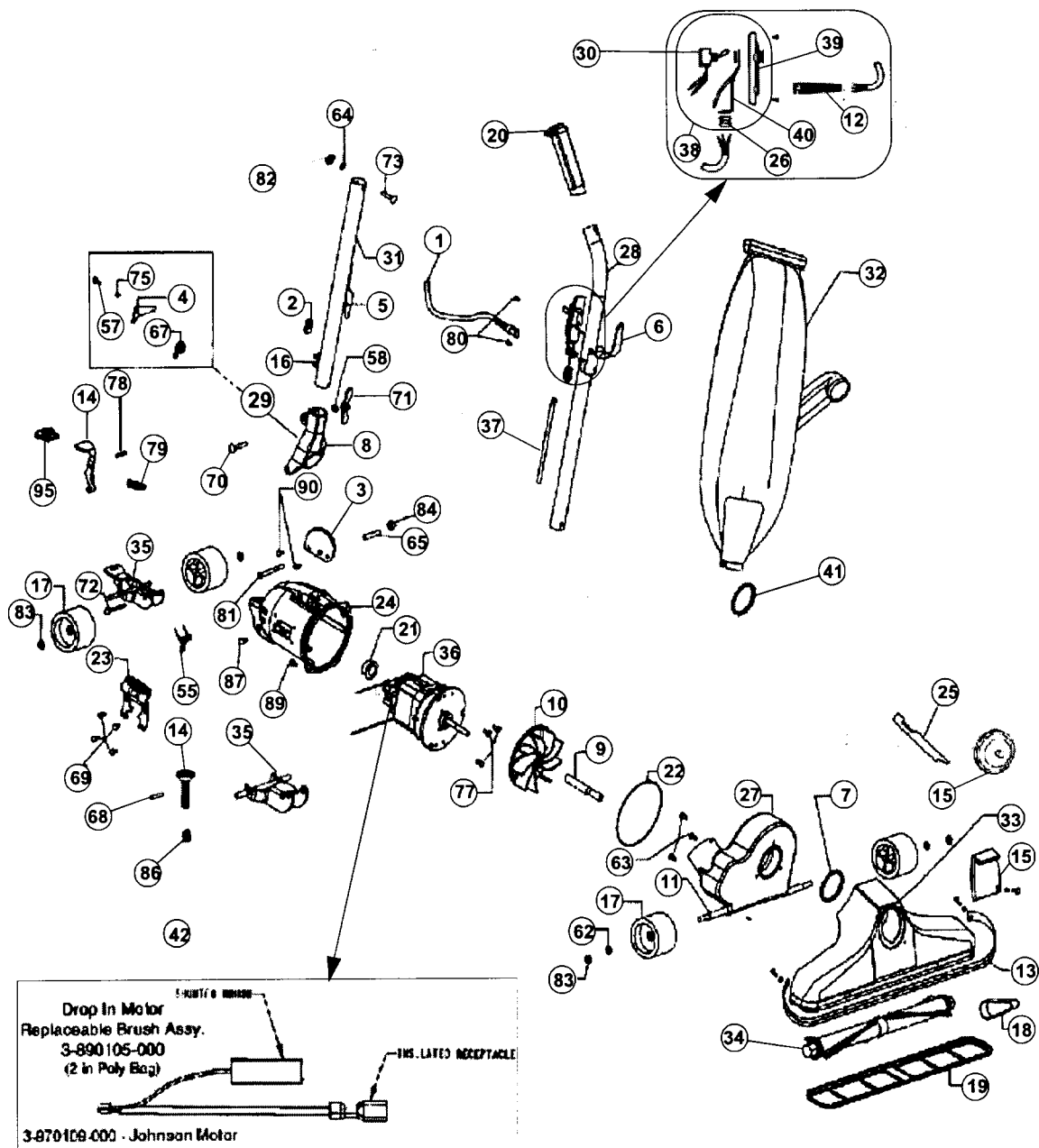


Model: 1058, 1058Z



Model: 1058, 1058Z

Index	Part No.	Description
1	R-061136	Cord, 50 ft, orange
2	R-230324	Grommet
3	R-133716	Handle stop plate
4	R-133737	Handle fork latch
5	R-259316	Cord hook, lower
6	R-259317	Cord hook upper
7	R-2854270	Gasket, nozzle sealing
8	R-2857040	Handle fork, polished
9	R-380262	Shaft extension
10	R-608005	Fan, slip on
11	R-618101	Axle stud
12	R-611305	Strain relief, power cord
13	R-618201	Bumper, black
	R-618201B	Bumper, gray
14	R-690715	Release pedal
	R-870012	Adjustment bolt (1058Z)
15	R-167074	Nozzle plug, black
	R-701693	Adjust-o-right plate with knob (1058Z)
16	R-670844	Cord clip
17	R-671705	Wheel
18	R-672260	Belt
19	R-672270	Nozzle guard, 14"
20	R-880314	Handle grip, black
21	R-870006	Grommet, motor
22	R-870024	Motor housing o-ring
23	R-870130	Side plate
24	R-871101	Motor housing, polished (1058)
	R-870201	Motor housing, polished (1058Z)
25	R-880262	Belt lifter
26	R-880304	Strain relief, internal cord
27	R-670118	Fancase assembly
28	R-891052	Upper handle assembly, includes #6 and #20
29	R-028580	Handle fork and latch assembly
30	R-163309	Switch
31	R-891061	Handle adaptor assembly, includes #5 and #16
32	R-066240	Hinged bag assembly, complete (1058)
	R-066248	Shake out bag assembly, orange (1058)
	R-0662421	Hinged bag assembly, complete, w/zipper orange
33	R-381309	Nozzle assembly, includes #13
34	R-692225	Brush assembly
35	R-670007	Rear wheel fork/axle assembly (1058)
	R-028574	Rear wheel fork/axle assembly (1058Z)
36	R-970102	7 amp motor w/replaceable brushes
37	R-703236	Short cord and lug assembly
38	R-060837	Switch and plate assembly
39	R-608303	Switch plate
40	R-031103	Strain relief stamping
41	R-601407	Rubber inlet gasket

Index	Part No.	Description
42	R-38901050000	Carbon brush package, drop in motors
	R-970109	Carbon brush package, johnson drop in motors
55	R-003008	Wheel fork spring
56	R-003009	Rod spring
57	R-003022	Latch retainer screw
58	R-003311	Washer adaptor clamp screw
59	R-003884	Spring
60	R-006318	Lockwasher
61	R-004723	Handle fork spring
62	R-005138	Wheel retainer washer
63	R-023309	Screw
64	R-074330	Lockwasher
65	R-110773	Motor housing insert
66	R-110775	Rod adjustment sleeve (screw in)
67	R-133738	Handle latch spring
68	R-145734	Screw
69	R-186012	Self tapping screw
70	R-230713	Carriage bolt, handle
71	R-285720	Large wingnut
72	R-311031	Rear axle screw
73	R-074329	Square neck bolt
74	R-597743	Screw
75	R-601772	Latch spacer
76	R-606210	Headlight spring clip
77	R-670013	Motor plate screw
78	R-670705	Spring pin (1018, 1025, 1030, 1038, 089000)
79	R-672009	Release pedal spring (1018, 1025, 1030, 1038, 1058, 089000)
80	R-801701	Screw
81	R-801708	Handle fork bolt
82		Nut w/nylon insert
83	R-801711A	Wheel retainer cap
84	R-801714	Nut
85	R-802244	Screw
86	R-870013	Adjuster spring
87	R-880707	Screw
88	R-884708	Eye bolt
89	R-980743	Thread forming screw
90	R-990104	screw
91	R-996011	Adjuster rod
92	R-996101	Retaining pin
93	R-996711	E-ring
94	NLA	Screw
95	R-130008B	Foot adjustment lever cover