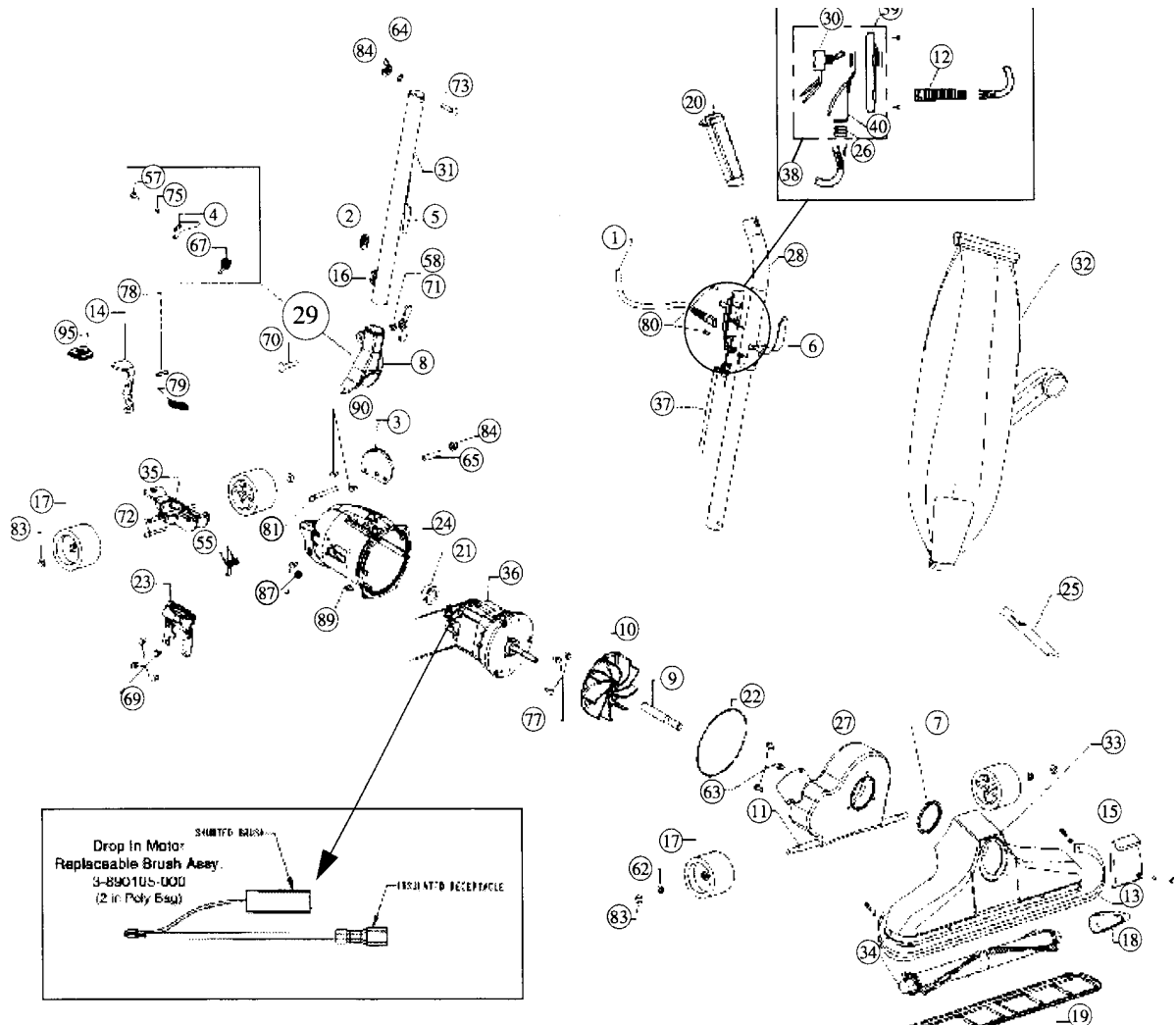


# ROYAL

# METAL UPRIGHTS

Models: 1050, 1058, 1058Z

For hardware items NOT listed in this schematic, refer to page 77.



- |  |  |
|--|--|
| 1.....R-061136B.....Cord                 | 26.....R-880304.....Strain Relief                  |
| 2.....R-230324.....Grommet               | 27.....R-670118.....Fancase Assembly               |
| 3.....R-133716.....Handle Stop Plate     | 28.....R-891052.....Upper Handle Assembly w/ #6,20 |
| 4.....R-133737.....Latch                 | 29.....R-028580.....Handle Fork and Latch Assembly |
| 5.....R-259316.....Cord Hook, lower      | 30.....R-163309.....Switch                         |
| 6.....R-259317.....Cord Hook, upper      | 31.....R-891061.....Handle Adaptor Assembly        |
| 7.....R-285427.....Nozzle Gasket         | 32.....R-066240.....Hinged Bag Assembly            |
| 8.....R-285704.....Handle Fork           | 33.....R-381309.....Nozzle Assembly w/ #13,15      |
| 9.....R-380261.....Shaft Extension       | 34.....R-692225.....Brush Roll Assy                |
| 10.....R-608005.....Fan                  | 35.....R-670007.....Wheel Fork & Axle Assy         |
| 11.....R-618101.....Axle Stud            | 36.....R-870102.....Motor Assy, 1050               |
| 12.....R-611305.....Strain Relief        | 36.....R-870114.....Motor Assy, 1058, 1058Z        |
| 13.....R-618201.....Bumper, grey         | 37.....R-870323.....Short Cord, black              |
| 14.....R-690715.....Release Peda         | R-060837.....Switch & Plate Assy                   |
| 15.....R-670744.....Nozzle Plug, grey    | R-608303.....Switch Plate                          |
| 16.....R-670844.....Cord Clip            | R-031103.....Strain Relief                         |
| 17.....R-671705.....Wheel                |  |
| 18.....R-672260.....Belt                 |  |
| 19.....R-692270.....Nozzle Guard, 18"    |  |
| 20.....R-801314G.....Grip, handle        |  |
| 21.....R-870006.....Motor Grommet        |  |
| 22.....R-870024.....Motor Housing O-Ring |  |
| 23.....R-870130.....Side Plate           |  |
| 24.....R-871101.....Motor Housing        |  |
| 25.....R-880262.....Belt Lifter          |  |