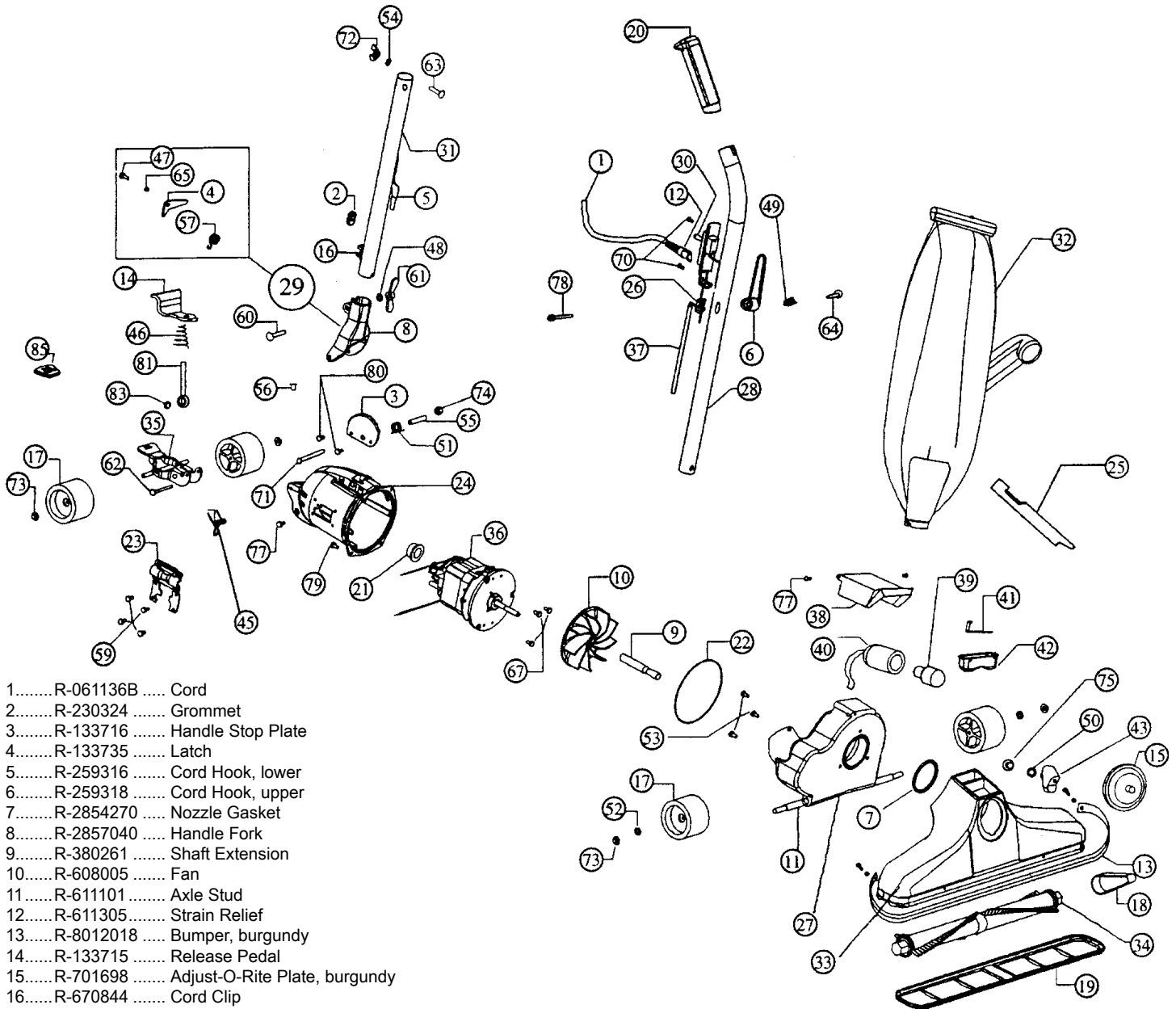


Models: 97001

For hardware items NOT listed in this schematic, refer to page 77.



- 1.....R-061136B ..... Cord
- 2.....R-230324 ..... Grommet
- 3.....R-133716 ..... Handle Stop Plate
- 4.....R-133735 ..... Latch
- 5.....R-259316 ..... Cord Hook, lower
- 6.....R-259318 ..... Cord Hook, upper
- 7.....R-2854270 ..... Nozzle Gasket
- 8.....R-2857040 ..... Handle Fork
- 9.....R-380261 ..... Shaft Extension
- 10.....R-608005 ..... Fan
- 11.....R-611101 ..... Axle Stud
- 12.....R-611305..... Strain Relief
- 13.....R-8012018 ..... Bumper, burgundy
- 14.....R-133715 ..... Release Pedal
- 15.....R-701698 ..... Adjust-O-Rite Plate, burgundy
- 16.....R-670844 ..... Cord Clip
- 17.....R-880705 ..... Wheel
- 18.....R-672260 ..... Belt
- 19.....R-672270 ..... Nozzle Guard
- 20.....R-8013148 ..... Grip, handle, burgundy
- 21.....R-870006 ..... Motor Grommet
- 22.....R-870024 ..... Motor Housing O-Ring
- 23.....R-870130 ..... Side Plate
- 24.....R-870101 ..... Motor Housing
- 25.....R-880262 ..... Belt Lifter
- 26.....R-880304 ..... Strain Relief
- 27.....R-060810 ..... Fancase Assembly
- 28.....R-088733 ..... Upper Handle Assembly, w/ #6,20,80
- 29.....R-028590 ..... Handle Fork and Latch only  
 R-208590 ..... Lower handle tube  
 R-700132 ..... Male handle fork screw  
 R-700133 ..... Female handle fork screw
- 30.....R-163302 ..... Switch

- 31.....R-065534 ..... Handle Adaptor Assembly, w/ #5,16
- 32.....R-90843C..... Zipper Bag, scafitex, dark burgundy
- 33.....R-080226 ..... Nozzle Assembly, w/ #13,43
- 34.....R-673274 ..... Brush Roll Assy, w/ speed indicator
- 35.....R-996575 ..... Wheel Fork & Axle Assy
- 36.....NLA ..... Motor Assy
- 37.....R-703236 ..... Short Cord & Lug Assembly
- 38.....R-0880608 ..... Light Stamping
- 39.....R-725629 ..... Light Bulb, 12 volt
- 40.....R-870060 ..... Light Socket & Cord Assembly
- 41.....R-028563 ..... Chemical Chamber Cover Assembly
- 42.....R-880118 ..... Chemical Chamber
- 43.....R-802260 ..... Brush Speed Indicator Assembly