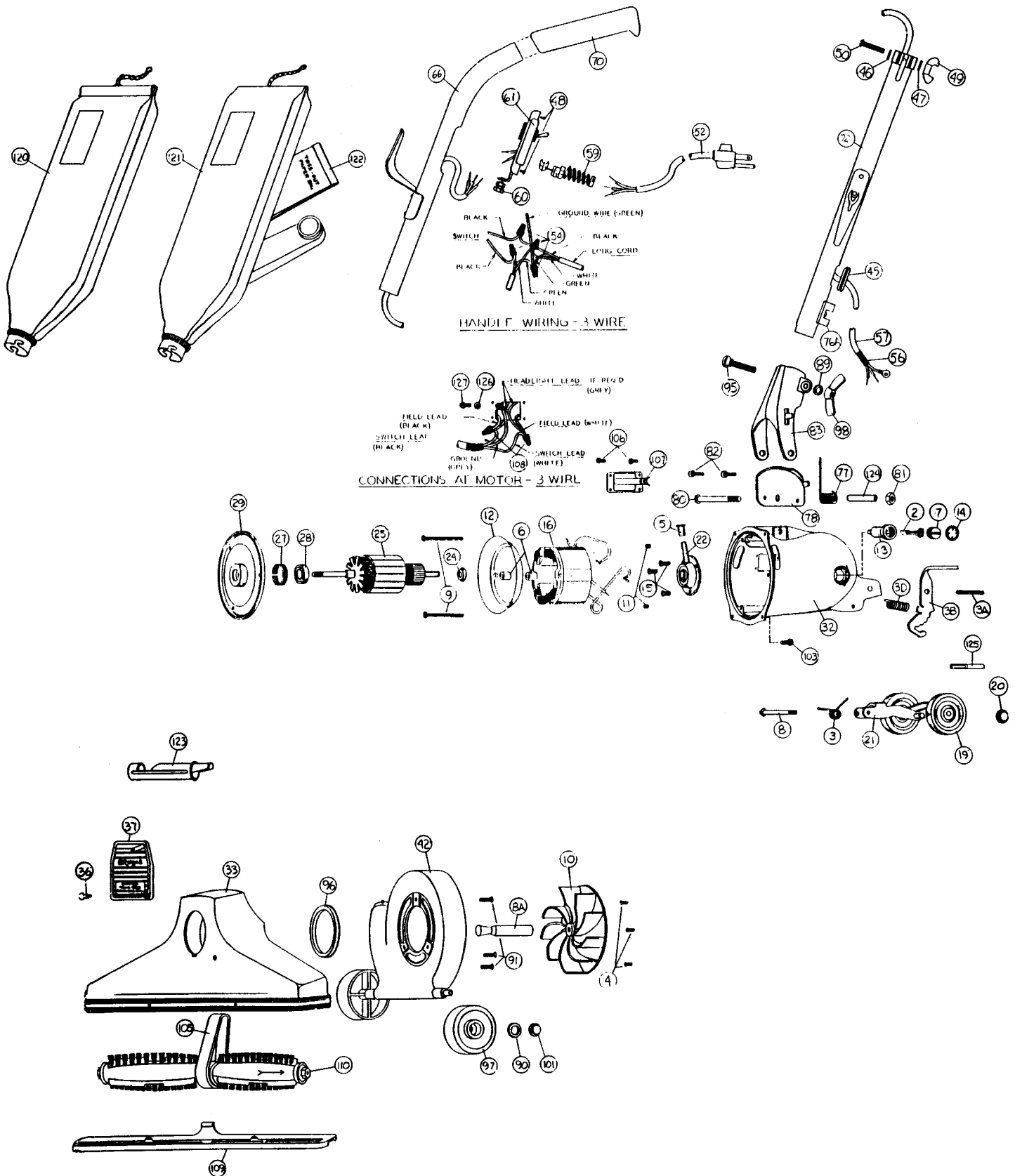


ROYAL

METAL UPRIGHTS

Models: 361



Models: 361

NLA	Motor Unit Assy	56	NLA	Cord Protecting Sleeve	
2	NLA	Carbon Brush Assy	57	NLA	Short Cord & Lug Assembly
3	R-003008	Spring, rear fork	59	R-611305	Strain Relief, switch plate
3A	R-670705	Spring Pin	60	R-880304	Strain Relief, handle
3B	R-690715	Release Pedal, incremental	61	R-060837	Switch & Plate Assembly
3D	R-672009	Spring, release pedal	62	R-163302	Toggle Switch
4	R-670013	Screw, motor plate ret.	66	R-062032	Upper Handle Assembly
5	R-065028	Oiler Cap	70	R-801314	Handle Grip
6	R-618772	Spacer, baffle	72	R-0655330	Handle Adaptor Assembly
7	R-672103	Brush Holder Screw Assembly	76A	R-670844	Cord, clip
8	R-311031	Screw & Washer Assembly	77	R-004723	Handle Fork Spring
8A	R-380261	Drive Shaft	78	R-133714	Handle Stop Plate
9	R-618016	Screw, field retainer	80	R-801708	Bolt, handle fork retainer
10	R-608005	Fan, heavy duty	81	R-801714	Nut, nylon insert
11	R-801014	Set Screw, brush holder	82	R-990104	Screw, handle stop plate
12	R-801017	Baffle Plate	83	R-028580	Handle Fork & Latch Assembly
13	R-801019	Brush Holder	89	R-003311	Washer, handle fork clamp screw
14	R-801034	Brush Holder Protector Cap	90	R-005138	Washer, wheel retainer
15	R-801701	Screw, rear bearing retainer	91	R-023309	Screw, nozzle & fan case
16	R-618002	Field, 120v	95	R-230713	Carriage Bolt, handle clamp
NLA	Rear Wheel, Fork & Shaft Assy	96	R-2854270	Gasket, nozzle sealing	
19	R-671705	Wheel, 2 1/2" diam.	97	R-671705	Wheel, wide
20	R-801711A	Wheel Retainer	98	R-285720	Wingnut, large
21	R-670007	Rear Fork & Shaft Assembly	101	NLA	Wheel Retainer
22	R-080126	Rear Bearing Assy	103	R-980743	Screw, machine-thread forming
R-088407	Motor Plate & Armature Assy	105	R-672260	Belt	
24	R-175053	Washer, oil slinger	106	R-360753	Screw, side connections plate
25	R-884001	Armature, 120v	107	R-183749	Side Connections Plate
NLA	Motor Plate & Bearing Assy	108	R-259762	Wire Connector, blue	
27	R-880046	Tolerance Ring	109	R-692270	Nozzle Guard
28	R-880026	Ball Bearing	110	R-673273	Brush Roll Assembly
29	R-884003	Motor Plate	120	R-770040	Bag Assy, shakeout, 361
32	NLA	Motor Housing	121	NLA	Bag Assy, zipper, 361Z
33	R-671026	Nozzle Assembly	122	R-66247	Paper Bag
36	NLA	Rivet, nozzle plug	123	R-880262	Belt Lifter
37	R-670744B	Nozzle Plug	124	R-110773	Insert, motor housing
40	R-670118	Fancase Assembly	125	NLA	Cover, lever
R-655030	Handle & Cord Assembly, 50ft	126	R-006318	Lockwasher	
45	R-230324	Grommet	127	R-880707	Screw, ground lead
46	R-003311	Washer			
47	R-023311	Lockwasher			
48	R-801701	Screw, switch plate			
49	R-801710	Wingnut, small			
50	R-801712	Screw, adaptor clamp			
R-060831	Switch & Cord Assembly, 50 ft				
52	NLA	Cord & Plug Assembly, 50 ft			
54	R-259761	Wire Connector, grey			