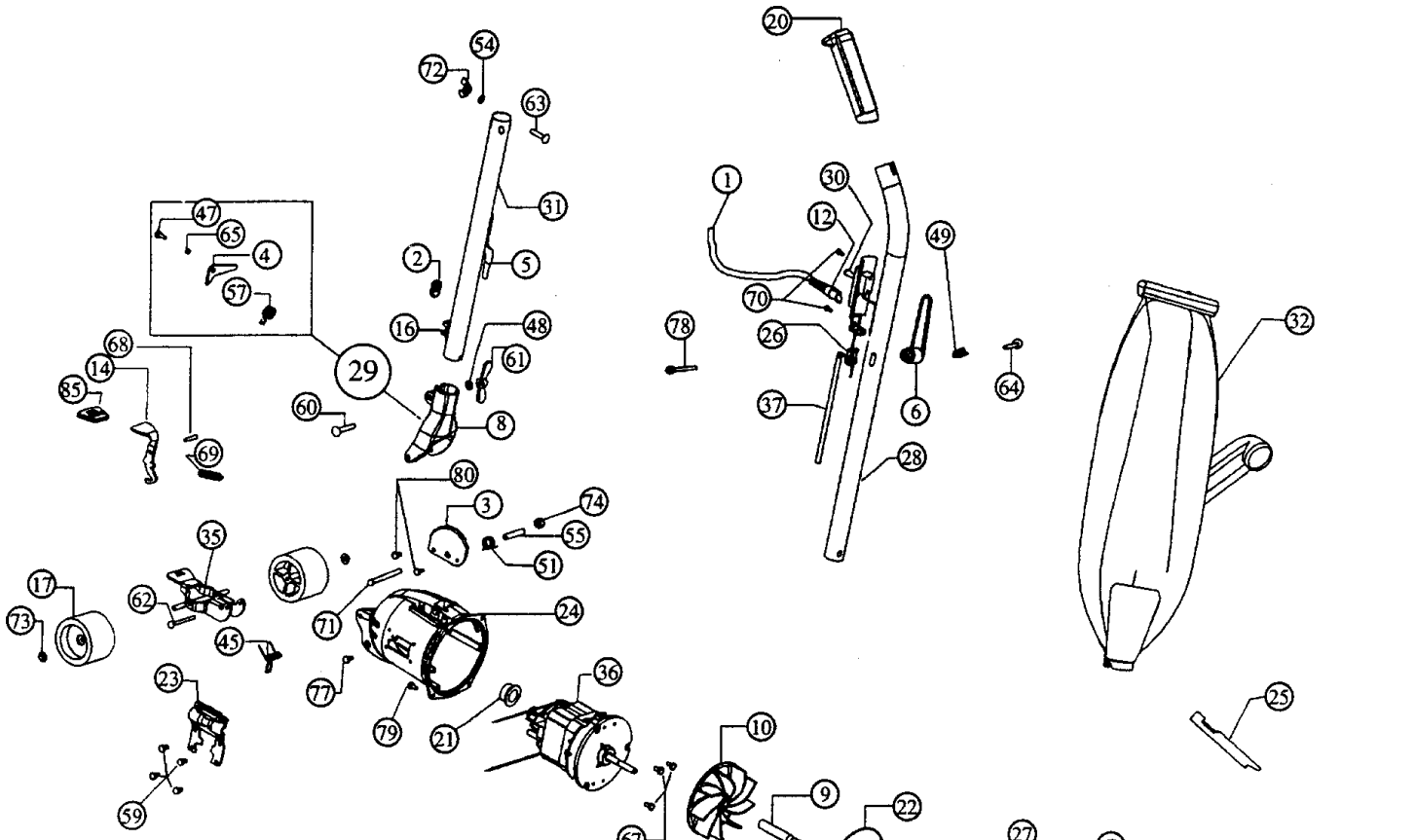


# ROYAL

# METAL UPRIGHTS

Models: 3000, 3008

For hardware items NOT listed in this schematic, refer to page 77.



- 1.....R-028540 ..... Cord & Plug Assembly, 40 ft
- 2.....R-230324 ..... Grommet
- 3.....R-133716 ..... Handle Stop Plate
- 4.....R-133737 ..... Latch
- 5.....R-259316 ..... Cord Hook, lower
- 6.....R-259318 ..... Cord Hook, upper
- 7.....R-2854270 ..... Nozzle Gasket
- 8.....R-2857040 ..... Handle Fork
- 9.....R-380261 ..... Shaft Extension
- 10.....R-608005 ..... Fan
- 11.....R-611101 ..... Axle Stud
- 12.....R-322305 ..... Strain Relief, flex type
- 13.....R-8012018 ..... Bumper, burgundy
- 14.....R-690715 ..... Release Pedal, incremental
- 15.....R-670744B ..... Nozzle Plug, black
- 16.....R-670844 ..... Cord Clip
- 17.....R-880705 ..... Wheel
- 18.....R-672260 ..... Belt
- 19.....R-672270 ..... Nozzle Guard
- 20.....R-8013148 ..... Grip, handle, burgundy
- 21.....R-870006 ..... Motor Grommet
- 22.....R-870024 ..... Motor Housing O-Ring
- 23.....R-870130 ..... Side Plate
- 24.....R-871101 ..... Motor Housing
- 25.....R-880262 ..... Belt Lifter
- 26.....R-880305 ..... Strain Relief
- 27.....R-670116 ..... Fancase Assembly
- 28.....R-891051 ..... Upper Handle Assembly, w/ #6,20,80

- 29.....R-028580 ..... Handle Fork and Latch Assembly
- 30.....R-163309 ..... Switch
- 31.....R-891061 ..... Handle Adaptor Assembly, w/ #5,15
- 32.....R-10343C ..... Zipper Bag, microtex
- 33.....R-671026 ..... Nozzle Assembly, w/ #13,15
- 34.....R-673273 ..... Brush Roll Assy, w/ speed indicator
- 35.....R-670007 ..... Wheel Fork & Axle Assy
- 36.....R-701020 ..... Motor Assy, 3000
- 36.....R-970102 ..... Motor Assy, 3008
- 37.....R-870040 ..... Short Cord, black
- R-028537 ..... Switch & Plate Assy
- R-249303 ..... Switch Plate
- R-153339 ..... Strain Relief Stamping

**PHONE: 1-800-822-7467    FAX: 847-647-0534    E-MAIL: sales@hescoinc.com    WEB: hescoinc.com**