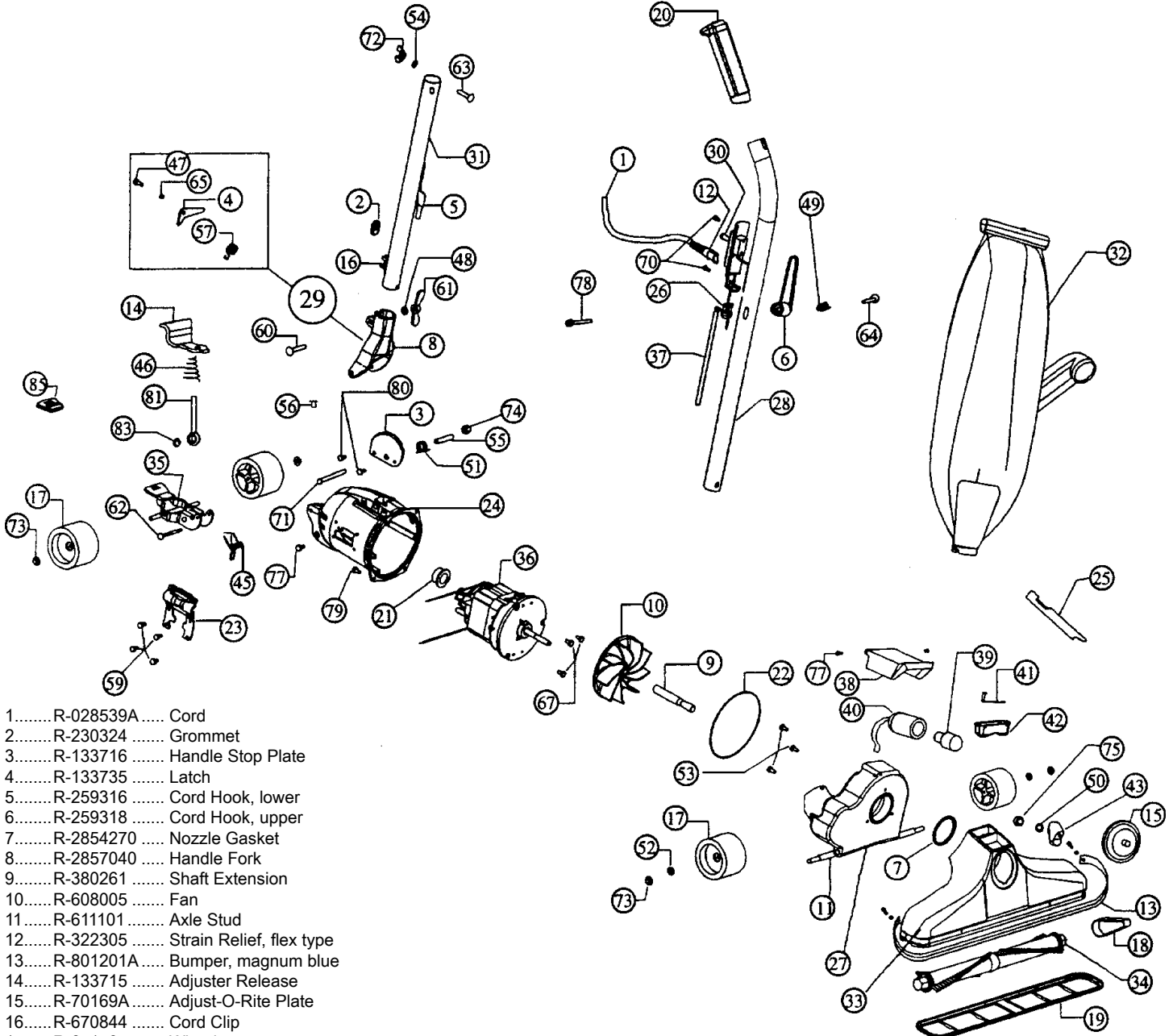


Models: 2075, 2078

For hardware items NOT listed in this schematic, refer to page 77



- 1.....R-028539A..... Cord
- 2.....R-230324..... Grommet
- 3.....R-133716..... Handle Stop Plate
- 4.....R-133735..... Latch
- 5.....R-259316..... Cord Hook, lower
- 6.....R-259318..... Cord Hook, upper
- 7.....R-2854270..... Nozzle Gasket
- 8.....R-2857040..... Handle Fork
- 9.....R-380261..... Shaft Extension
- 10.....R-608005..... Fan
- 11.....R-611101..... Axle Stud
- 12.....R-322305..... Strain Relief, flex type
- 13.....R-801201A..... Bumper, magnum blue
- 14.....R-133715..... Adjuster Release
- 15.....R-70169A..... Adjust-O-Rite Plate
- 16.....R-670844..... Cord Clip
- 17.....R-671705..... Wheel
- 18.....R-672260..... Belt
- 19.....R-672270..... Nozzle Guard
- 20.....R-801314A..... Grip, handle, magnum blue
- 21.....R-870006..... Motor Grommet
- 22.....R-870024..... Motor Housing O-Ring
- 23.....R-870130..... Side Plate
- 24.....R-870201..... Motor Housing
- 25.....R-880262..... Belt Lifter
- 26.....R-880305..... Strain Relief
- 27.....R-880116..... Fancase Assembly
- 28.....R-88733A..... Upper Handle Assembly, w/ #6,20,80
- 29.....R-028580..... Handle Fork and Latch Assembly
- 30.....R-163309..... Switch
- 31.....R-065534..... Handle Adaptor Assembly, w/ #5,15
- 32.....R-088742A..... Zipper Bag, scafitex, blue

- 33.....R-080226A..... Nozzle Assembly, w/ #13,43
- 34.....R-673274..... Brush Roll Assy, w/ speed indicator
- 35.....R-099206..... Wheel Fork & Axle Assy
- 36.....R-701020..... Motor Assy, 2075
- 36.....R-970102..... Motor Assy, 2078
- 37.....R-870040..... Short Cord, black
- 38.....R-70060A..... Light Stamping
- 39.....R-725629..... Light Bulb, 12 volt
- 40.....R-870060..... Light Socket & Cord Assembly
- 41.....R-028563..... Chemical Chamber Cover Assembly
- 42.....R-880118..... Chemical Chamber
- 43.....R-802260..... Brush Speed Indicator Assembly
- R-028537..... Switch & Plate Assy
- R-249303..... Switch Plate
- R-153339..... Strain Relief Stamping