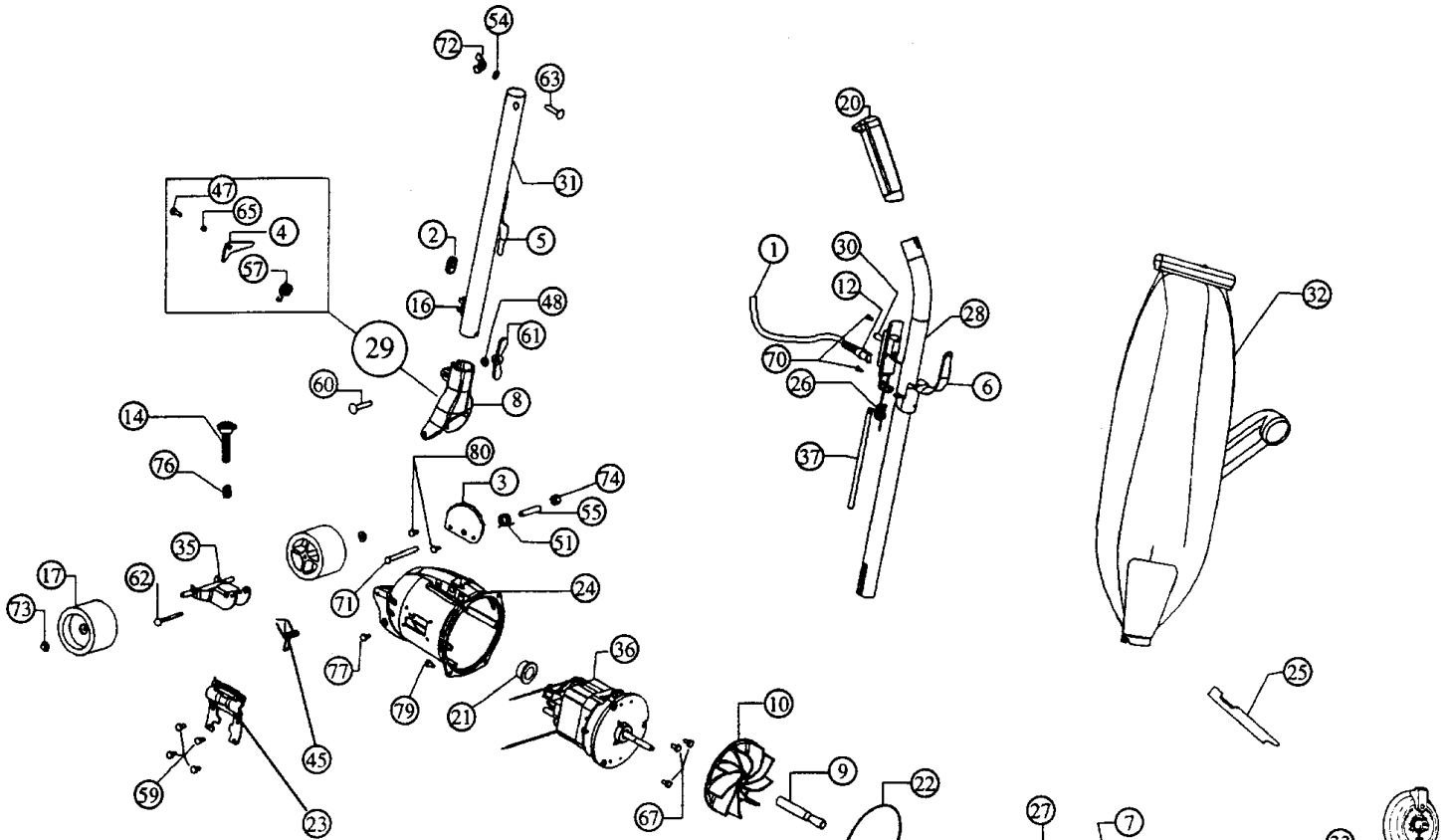


Models: 1020, 1028, 1028Z

For hardware items NOT listed in this schematic, refer to page 77.



- 1.....R-061136B ..... Cord
- 2.....R-230324 ..... Grommet
- 3.....R-133716 ..... Handle Stop Plate
- 4.....R-133735 ..... Latch
- 5.....R-259316 ..... Cord Hook, lower
- 6.....R-259317 ..... Cord Hook, upper
- 7.....R-2854270 ..... Nozzle Gasket
- 8.....R-2857041 ..... Handle Fork
- 9.....R-380261 ..... Shaft Extension
- 10.....R-608005 ..... Fan
- 11.....R-611101 ..... Axle Stud
- 12.....R-322305 ..... Strain Relief, flex type
- 13.....R-8012018 ..... Bumper
- 14.....R-870012 ..... Adjustment Bolt
- 15.....R-701693 ..... Adjust-O-Rite Plate
- 16.....R-670844 ..... Cord Clip
- 17.....R-880705 ..... Wheel
- 18.....R-672260 ..... Belt
- 19.....R-672270 ..... Nozzle Guard
- 20.....R-801314G..... Grip, handle
- 21.....R-870006 ..... Motor Grommet
- 22.....R-870014 ..... Motor Housing O-Ring
- 23.....R-870021 ..... Side Plate
- 24.....R-870201 ..... Motor Housing
- 25.....R-880262 ..... Belt Lifter
- 26.....R-880304 ..... Strain Relief
- 27.....R-101161..... Fancase Assembly
- 28.....R-891052 ..... Upper Handle Assembly, w/ #6,20

- 29.....R-028580 ..... Handle Fork and Latch Assembly
- 30.....R-163309 ..... Switch
- 31.....R-065534 ..... Handle Adaptor Assembly, w/ #5,16
- 32.....R-066240 ..... Hinged Bag Assembly
- 32.....R-0662421 ..... Zipper Bag Assy, grey, w/ inlet
- 33.....R-061126B ..... Nozzle Assembly, w/ #13,15
- 34.....R-673273 ..... Brush Roll Assy
- 35.....R-028574 ..... Wheel Fork & Axle Assy
- 36.....R-701020 ..... Motor Assy, 1020
- 36.....R-970102 ..... Motor Assy, 1028
- 37.....R-703236 ..... Short Cord, black
- R-870323 ..... Short Cord & Lug Assy
- R-060837 ..... Switch & Plate Assy
- R-608303 ..... Switch Plate
- R-031103..... Strain Relief Stamping