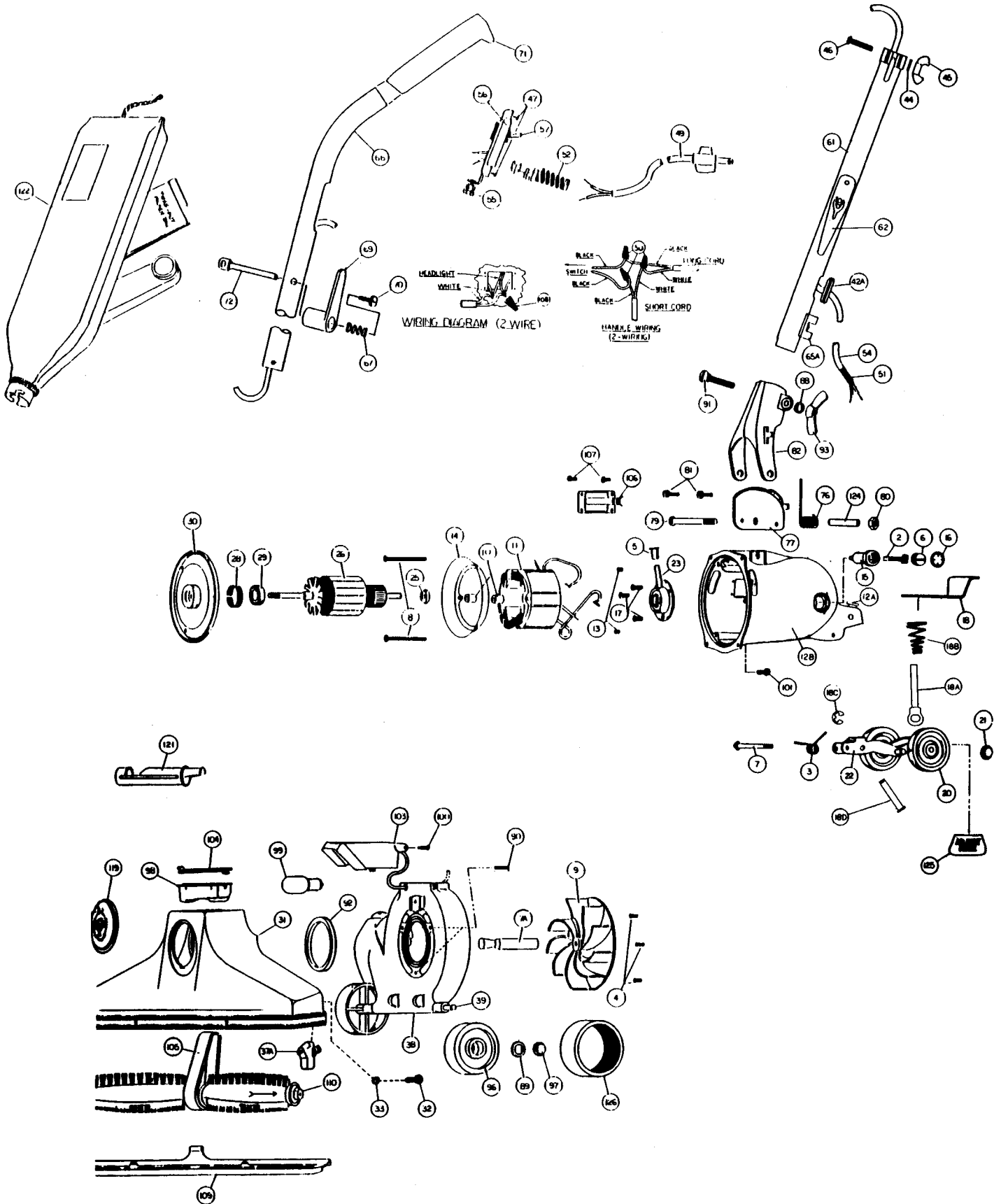


ROYAL

METAL UPRIGHTS

Models: 996



PHONE: 1-800-822-7467 FAX: 847-647-0534 E-MAIL: sales@hescoinc.com WEB: www.hescoinc.com

	NLA	Motor Unit Assy	51	NLA	Cord Protecting Sleeve
2	NLA	Carbon Brush Assy	52	R-322305	Strain Relief, switch plate
3	R-003008	Spring, rear fork	54	R-8013236	Short Cord
4	R-670013	Screw, motor plate ret.	55	R-880305	Strain Relief
5	R-065028	Oiler Cap	56	R-028537	Switch & Plate Assembly
6	R-672103	Brush Holder & Screw Assembly	57	R-163302	Toggle Switch
7	R-311031	Screw & Washer Assembly	61	R-0655330	Handle Adaptor Assembly
7A	R-380261	Drive Shaft	62	R-259316	Cord Hook, lower
8	R-618016	Screw, field retainer	65A	R-670844	Cord, clip
9	R-608005	Fan, heavy duty	66	R-088732B	Upper Handle Assembly
10	R-618772	Spacer, baffle	67	R-003884	Spring
11	R-780002	Field, 120v	69	R-259318	Upper Cord Hook
	NLA	Motor Housing Assembly	70	R-597743	Screw
12A	R-110775	Sleeve, rod adjuster	71	R-801314	Handle Grip, burgundy
12B	NLA	Motor Housing	72	R-884708	Eye Bolt
13	R-801014	Set Screw, brush holder	76	R-004723	Spring, handle fork
14	R-801017	Baffle Plate	77	R-133714	Handle Stop Plate
15	R-801019	Brush Holder	79	R-801708	Bolt, handle fork retainer
16	R-801034	Brush Holder Protector Cap	80	R-801714	Nut, nylon insert
17	R-801701	Screw, rear bearing retainer	81	R-990104	Screw, handle stop plate
18	R-133715	Adjuster Release	82	R-028580	Handle, Fork & Latch Assembly
18A	R-996011	Rod Adjuster	88	R-003311	Washer, handle fork clamp screw
18B	R-003009	Spring, rod	89	R-005138	Washer, wheel retainer
18C	R-996711	E-Ring	90	R-023309	Screw, nozzle & fancase
18D	R-996101	Pin,retaining	91	R-230713	Carriage Bolt, handle clamp
	R-099206	Rear Wheel, Fork & Shaft Assy	92	R-2854270	Gasket, nozzle sealing
20	R-880705	Wheel, 2 1/2" diam.	93	R-285720	Wingnut, large
21	R-801711A	Wheel Retainer	96	R-880705	Wide Front Wheel, 2 1/2" diam.
22	R-996575	Rear Fork & Shaft Assembly	97	R-801711A	Wheel Retainer
23	R-080126	Rear Bearing Assembly	98	R-880118	Chemical Chamber
	R-078007	Motor Plate & Armature Assy	99	R-880629	Headlight Bulb
25	R-175053	Washer, oil slinger	100	R-880707	Screw, headlight assy retainer
26	R-780001	Armature, 120v	101	R-980743	Screw, machine-thread forming
	NLA	Motor Plate & Bearing Assy	103	NLA	Headlight Assembly
28	R-880046	Tolerance Ring	104	R-028563	Cover, chemical chamber
29	R-880026	Ball Bearing	105	R-672260	Belt
30	R-884003	Motor Plate	106	R-183749	Side Connection Plate
31	R-080226	Nozzle Assembly	107	R-360753	Screw, side connection plate
32	NLA	Screw	108	R-259762	Connector Wire
33	R-004221	Lock Washer	109	R-672270	Nozzle Guard
37A	R-802260	Brush Speed Indicator Assy	110	R-673274	Brush Roll Assembly
38	R-060810	Fancase Assembly	119	R-080169	Adjust-O-Rite Plate
39	R-611101	Axle Stud	121	R-880262	Belt Lifter
	R-099430A	Handle & Cord Assembly	122	NLA	Bag Assembly, zipper
42A	R-230324	Grommet	123	R-3067247	Paper Bag, 3 pack
44	R-023311	Lockwasher	123	R-671075	Paper Bag, Microfresh, 3 pack
45	R-801710	Wingnut, small	123	R-66247	Paper Bag, 10 pack
46	R-360713	Screw, adaptor clamp	123	745	Paper Bag, 3 pack (R)
47	R-801701	Screw, switch plate	124	R-110773	Insert, motor housing
	NLA	Switch & Cord Assembly	125	R-1300086	Cover, lever
49	R-028537	Cord & Plug Assembly	126	R-908808	Wheel Cover, wide
50	R-259761	Wire Connector			