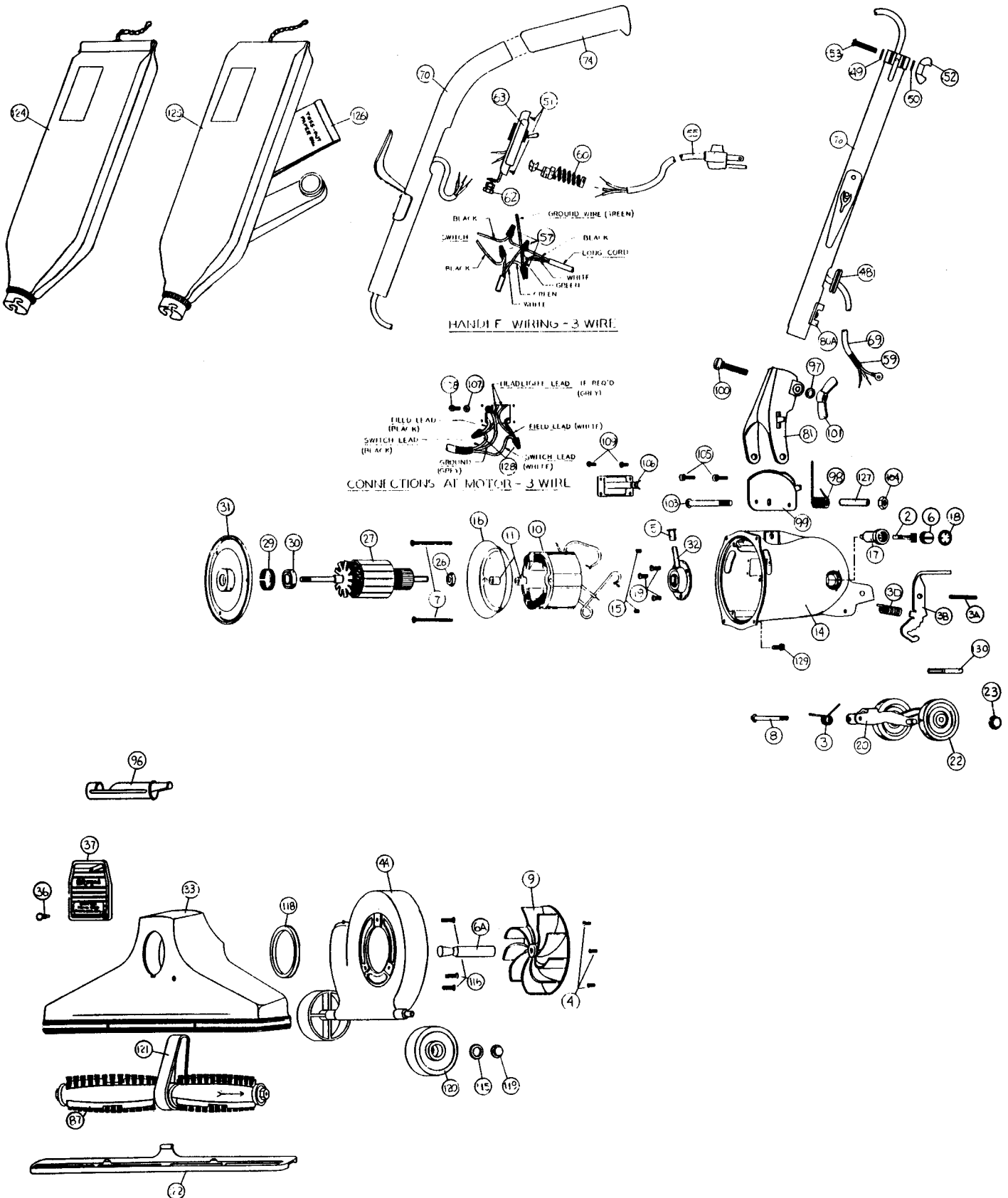


ROYAL

METAL UPRIGHTS

Models: 691



PHONE: 1-800-822-7467 FAX: 847-647-0534 E-MAIL: sales@hescoinc.com WEB: www.hescoinc.com

Models: 691

NLA	Motor Unit Assy	57	R-259761	Wire Connector	
2	NLA	Carbon Brush Assy	59	NLA	Cord Protecting Sleeve
3	R-003008	Spring, rear fork	61	R-611305	Strain Relief, switch plate
3A	R-670705	Spring Pin	62	R-880304	Strain Relief, handle
3B	R-690715	Release Pedal, incremental	63	R-060837	Switch & Plate Assembly
3D	R-672009	Spring, release pedal	69	NLA	Short Cord & Lug Assembly
4	R-670013	Screw, motor plate ret.	70	R-062034B	Upper Handle Assembly
5	R-065028	Oiler Cap	74	R-801314	Handle Grip
6	R-672103	Brush Holder & Screw Assembly	76	R-0655330	Handle Adaptor Assembly
6A	R-380261	Drive Shaft	80A	R-670844	Cord, clip
7	R-618016	Screw, field retainer	81	R-028580	Handle Fork & Latch Assy
8	R-311031	Screw & Washer Assembly	89	R-692225	Revolving Brush Assembly, hex end
9	R-608005	Fan, heavy duty	89	R-695227	Revolving Brush Assembly, square end
10	R-780002	Field, 120v	96	R-880262	Belt Lifter
11	R-618772	Spacer, baffle	97	R-003311	Washer, handle clamp bolt
14	NLA	Motor Housing Assembly	98	R-004723	Handle Ford Spring
15	R-801014	Set Screw, brush holder	99	R-133714	Handle Stop Plate
16	R-801017	Baffle Plate	100	R-230713	Bolt, handle clamp
17	R-801019	Brush Holder	101	R-285720	Wingnut, large
18	R-801034	Brush Holder Protector Cap	103	R-801708	Bolt, handle fork ret.
19	R-801701	Screw, rear bearing retainer	104	R-801714	Nut, nylon insert
	R-067105	Rear Wheel, Fork & Shaft Assy	105	R-990104	Screw, handle stop plate
22	R-880705	Wheel, 2 1/2" diam.	106	R-183749	Side Plate
23	R-801711A	Wheel Retainer	107	R-006318	Lockwasher
24	R-670007	Rear Fork & Shaft Assembly	108	R-880707	Screw, ground lead
	R-078007	Motor Plate & Armature Assy	109	R-360753	Screw, side plate
26	R-175053	Washer, oil slinger	115	R-005138	Washer, wheel retainer
27	R-780001	Armature, 120v	116	R-023309	Screw, nozzle & fan case
	R-088007	Motor Plate & Bearing Assy	118	R-2854270	Gasket, nozzle sealing
29	R-880046	Tolerance Ring	119	R-801711A	Wheel Retainer
30	R-880026	Ball Bearing	120	R-671705	Wheel, wide
31	R-884003	Motor Plate	121	R-672260	Belt
32	R-080126	Rear Bearing Assembly	122	R-692270	Nozzle Guard
33	R-381026	Nozzle Assembly	124	R-066240	Bag Assy, shakeout, 691
36	NLA	Rivet, nozzle plug	125	0662421	Bag Assy, zipper, 691Z
37	R-670744B	Nozzle Plug	126	R-66247	Paper Bag
43	R-67018	Fancase Assembly	127	R-110773	Insert, motor housing
	R-067030	Handle & Cord Assembly, 50ft	128	R-259762	Wire Connector
48	R-230324	Grommet	129	R-980743	Screw
49	R-003311	Washer, adaptor clamp screw	130	R-1300086	Foot Adjustment Cover, black
50	R-023311	Lockwasher			
51	R-801701	Screw, switch plate			
42	R-801710	Wingnut, small			
53	R-801712	Screw, adaptor clamp			
	R-060831	Switch & Cord Assembly, 50 ft			
55	NLA	Cord & Plug Assembly, 50 ft			