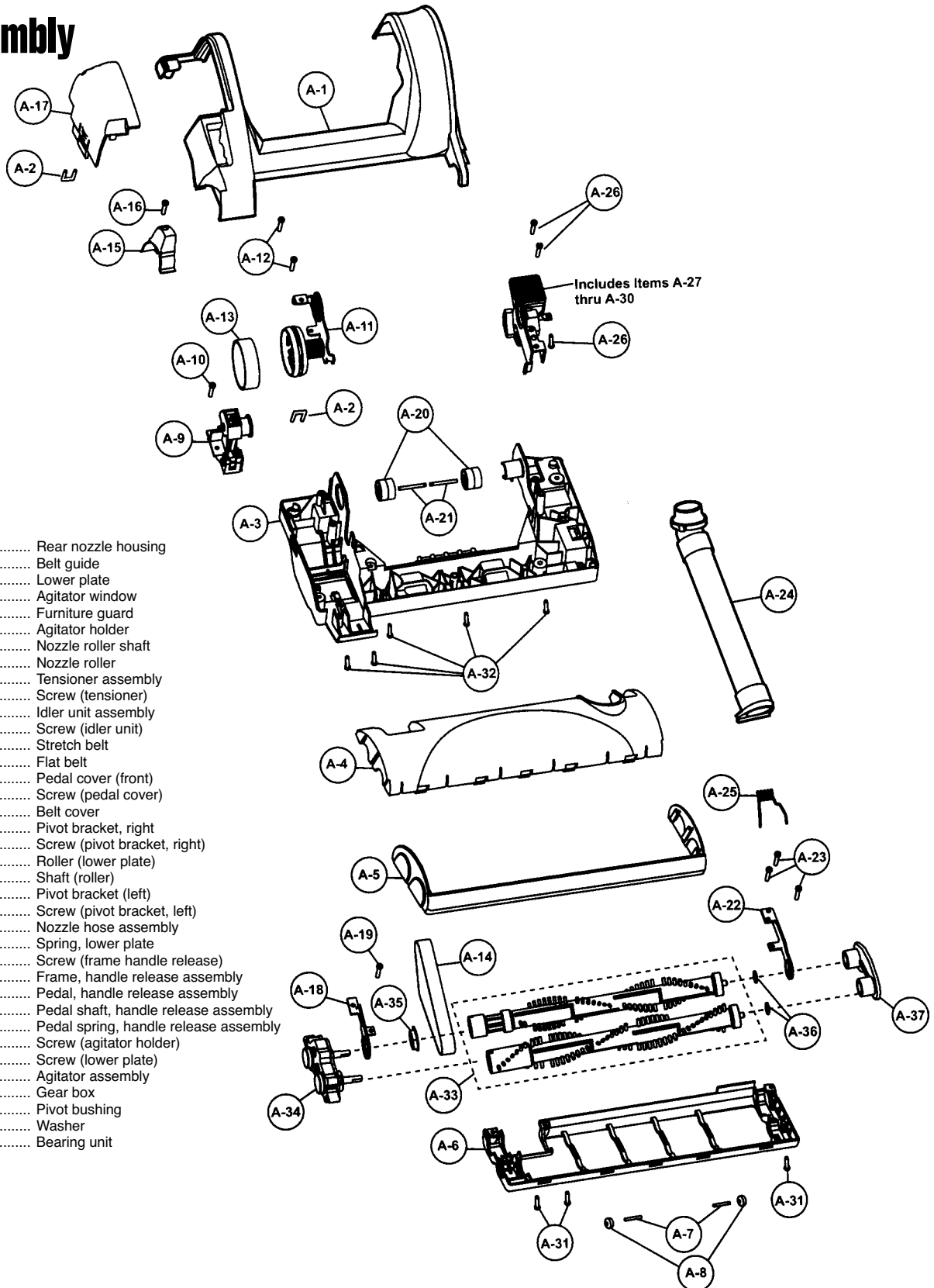


Models: MC-V7572

## Nozzle Assembly

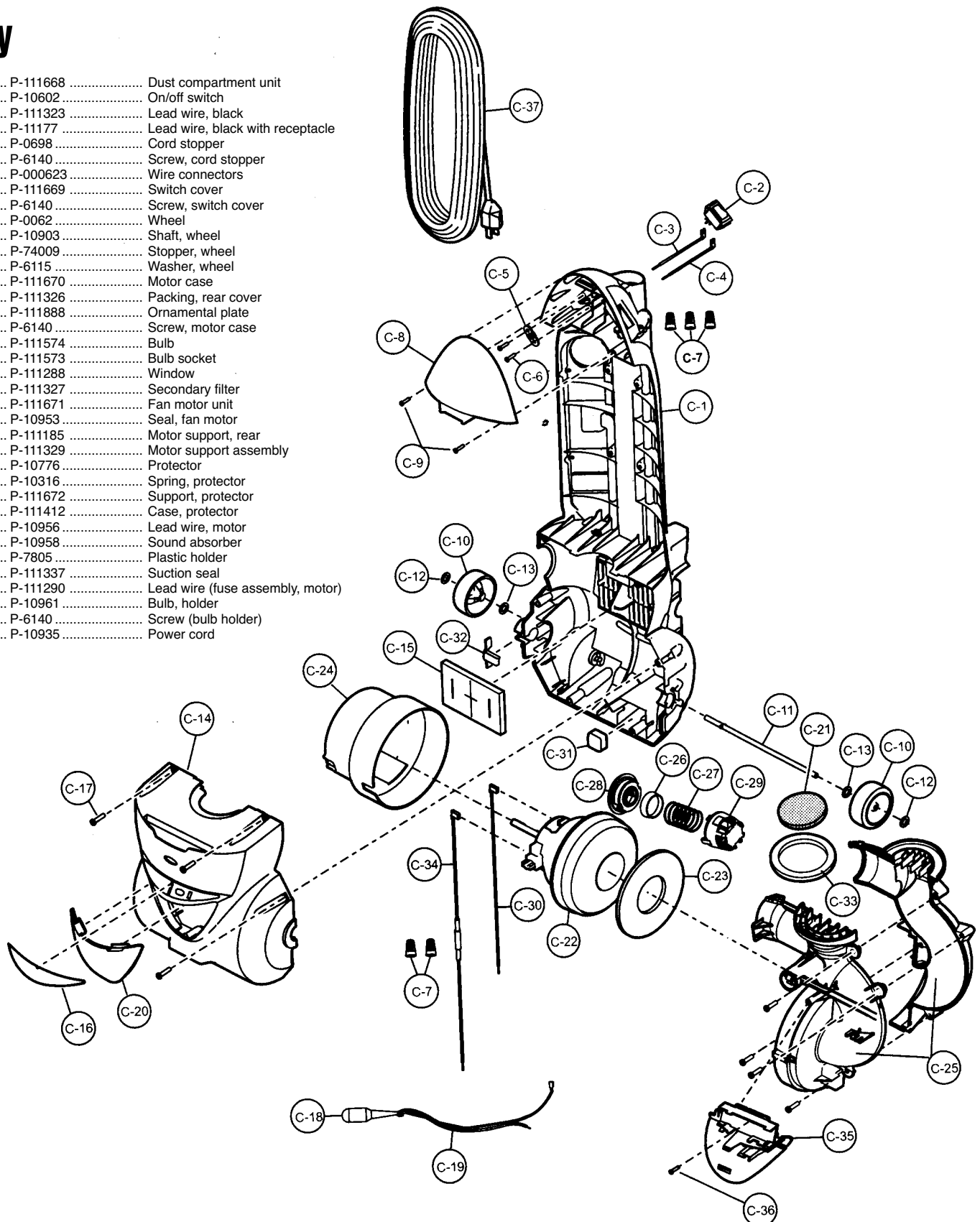


- |    |       |          |       |                                       |
|----|-------|----------|-------|---------------------------------------|
| 1  | ..... | P-111652 | ..... | Rear nozzle housing                   |
| 2  | ..... | P-111653 | ..... | Belt guide                            |
| 3  | ..... | P-111654 | ..... | Lower plate                           |
| 4  | ..... | P-117655 | ..... | Agitator window                       |
| 5  | ..... | P-10894  | ..... | Furniture guard                       |
| 6  | ..... | P-111656 | ..... | Agitator holder                       |
| 7  | ..... | P-111657 | ..... | Nozzle roller shaft                   |
| 8  | ..... | P-111658 | ..... | Nozzle roller                         |
| 9  | ..... | P-111659 | ..... | Tensioner assembly                    |
| 10 | ..... | P-6140   | ..... | Screw (tensioner)                     |
| 11 | ..... | P-11168  | ..... | Idler unit assembly                   |
| 12 | ..... | P-6140   | ..... | Screw (idler unit)                    |
| 13 | ..... | P-11170  | ..... | Stretch belt                          |
| 14 | ..... | P-11169  | ..... | Flat belt                             |
| 15 | ..... | P-111660 | ..... | Pedal cover (front)                   |
| 16 | ..... | P-10888  | ..... | Screw (pedal cover)                   |
| 17 | ..... | P-111661 | ..... | Belt cover                            |
| 18 | ..... | P-111662 | ..... | Pivot bracket, right                  |
| 19 | ..... | P-6140   | ..... | Screw (pivot bracket, right)          |
| 20 | ..... | P-9888   | ..... | Roller (lower plate)                  |
| 21 | ..... | P-10357  | ..... | Shaft (roller)                        |
| 22 | ..... | P-111663 | ..... | Pivot bracket (left)                  |
| 23 | ..... | P-6140   | ..... | Screw (pivot bracket, left)           |
| 24 | ..... | P-111664 | ..... | Nozzle hose assembly                  |
| 25 | ..... | P-10896  | ..... | Spring, lower plate                   |
| 26 | ..... | P-6140   | ..... | Screw (frame handle release)          |
| 27 | ..... | P-00095  | ..... | Frame, handle release assembly        |
| 28 | ..... | P-4720   | ..... | Pedal, handle release assembly        |
| 29 | ..... | P-111665 | ..... | Pedal shaft, handle release assembly  |
| 30 | ..... | P-000010 | ..... | Pedal spring, handle release assembly |
| 31 | ..... | P-6140   | ..... | Screw (agitator holder)               |
| 32 | ..... | P-6140   | ..... | Screw (lower plate)                   |
| 33 | ..... | P-111666 | ..... | Agitator assembly                     |
| 34 | ..... | P-10892  | ..... | Gear box                              |
| 35 | ..... | P-111667 | ..... | Pivot bushing                         |
| 36 | ..... | P-0030   | ..... | Washer                                |
| 37 | ..... | P-10891  | ..... | Bearing unit                          |

Models: MC-V7572

## Body

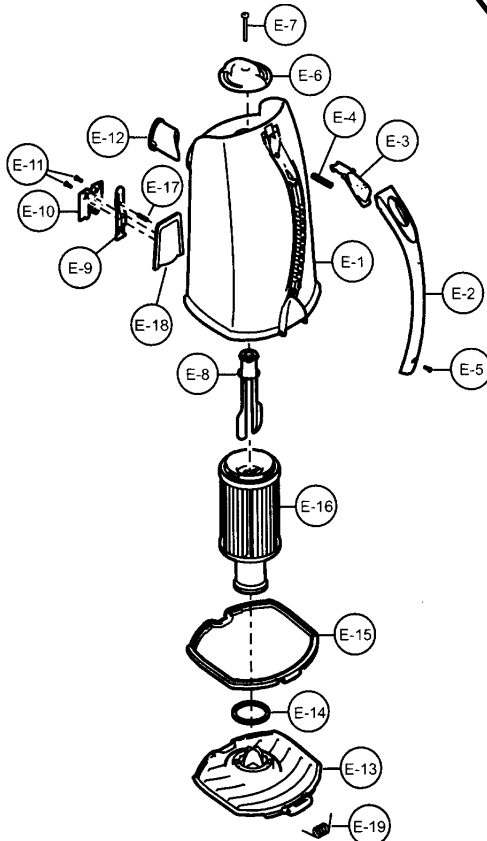
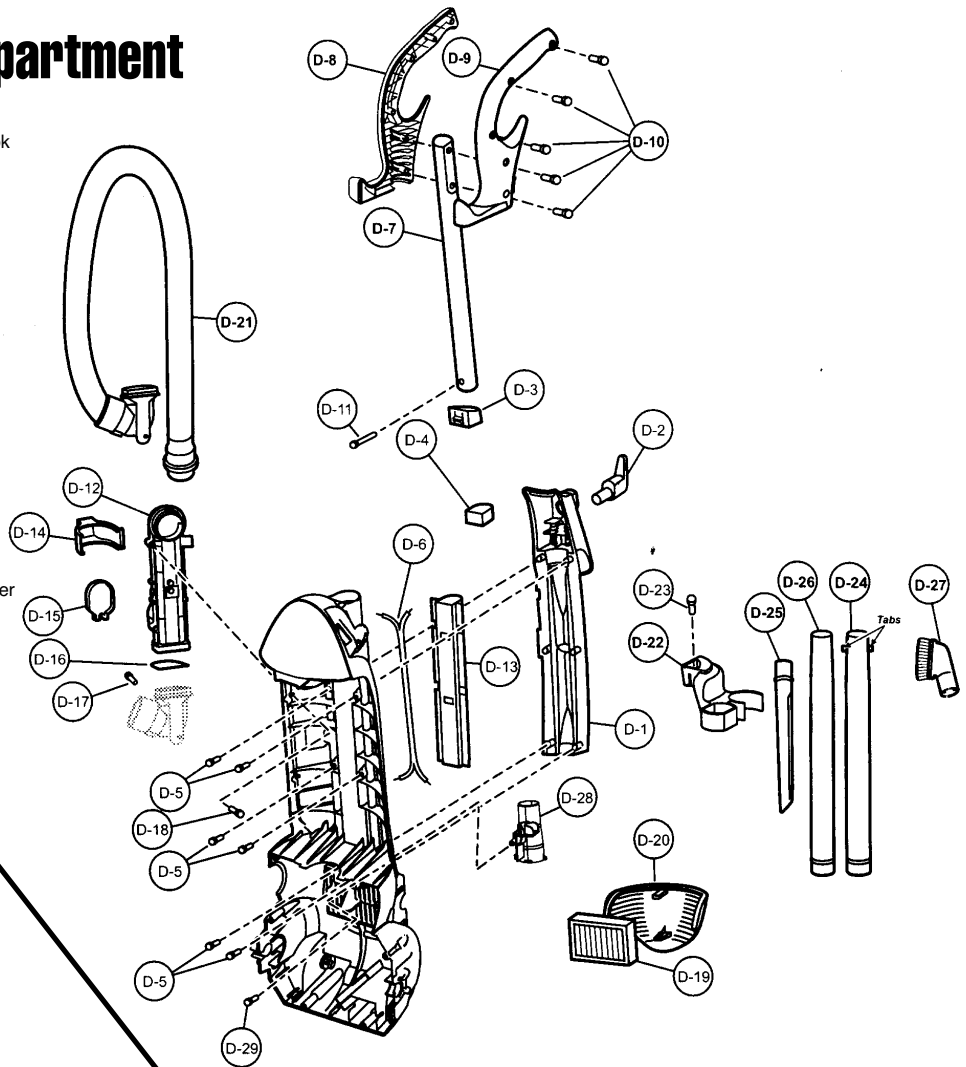
- |    |          |                                  |
|----|----------|----------------------------------|
| 1  | P-111668 | Dust compartment unit            |
| 2  | P-10602  | On/off switch                    |
| 3  | P-111323 | Lead wire, black                 |
| 4  | P-11177  | Lead wire, black with receptacle |
| 5  | P-0698   | Cord stopper                     |
| 6  | P-6140   | Screw, cord stopper              |
| 7  | P-000623 | Wire connectors                  |
| 8  | P-111669 | Switch cover                     |
| 9  | P-6140   | Screw, switch cover              |
| 10 | P-0062   | Wheel                            |
| 11 | P-10903  | Shaft, wheel                     |
| 12 | P-74009  | Stopper, wheel                   |
| 13 | P-6115   | Washer, wheel                    |
| 14 | P-111670 | Motor case                       |
| 15 | P-111326 | Packing, rear cover              |
| 16 | P-111888 | Ornamental plate                 |
| 17 | P-6140   | Screw, motor case                |
| 18 | P-111574 | Bulb                             |
| 19 | P-111573 | Bulb socket                      |
| 20 | P-111288 | Window                           |
| 21 | P-111327 | Secondary filter                 |
| 22 | P-111671 | Fan motor unit                   |
| 23 | P-10953  | Seal, fan motor                  |
| 24 | P-111185 | Motor support, rear              |
| 25 | P-111329 | Motor support assembly           |
| 26 | P-10776  | Protector                        |
| 27 | P-10316  | Spring, protector                |
| 28 | P-111672 | Support, protector               |
| 29 | P-111412 | Case, protector                  |
| 30 | P-10956  | Lead wire, motor                 |
| 31 | P-10958  | Sound absorber                   |
| 32 | P-7805   | Plastic holder                   |
| 33 | P-111337 | Suction seal                     |
| 34 | P-111290 | Lead wire (fuse assembly, motor) |
| 35 | P-10961  | Bulb, holder                     |
| 36 | P-6140   | Screw (bulb holder)              |
| 37 | P-10935  | Power cord                       |



Models: MC-V7572

## Handle, Rear Dust Compartment

- |    |          |                          |
|----|----------|--------------------------|
| 1  | P-111341 | Handle cover             |
| 2  | P-7035   | Upper storage cord hook  |
| 3  | P-111342 | Handle seal              |
| 4  | P-111343 | Stopper, handle          |
| 5  | P-6140   | Screw, handle cover      |
| 6  | P-37020  | Wire cord                |
| 7  | P-111344 | Handle pipe              |
| 8  | P-111673 | Handle (a)               |
| 9  | P-111674 | Handle (b)               |
| 10 | P-6140   | Screw, handle            |
| 11 | P-111346 | Screw (attach handle)    |
| 12 | P-111371 | Tube (air path)          |
| 13 | P-111348 | Handle tube              |
| 14 | P-10945  | Cover (dirt sensor)      |
| 15 | P-10946  | Cover (suction inlet)    |
| 16 | P-10947  | Packing (suction inlet)  |
| 17 | P-6140   | Screw (suction inlet)    |
| 18 | P-6140   | Screw (air path tube)    |
| 19 | P-11176  | Exhaust filter (HEPA)    |
| 20 | P-111341 | Filter cover             |
| 21 | P-111675 | Hose unit                |
| 22 | P-111374 | Attachment holder        |
| 23 | P-6140   | Screw, attachment holder |
| 24 | P-111300 | Wand with tabs           |
| 25 | P-6069   | Crevice tool             |
| 26 | P-111394 | Wand                     |
| 27 | P-6088   | Dusting brush            |
| 28 | P-111676 | Connector pipe           |
| 29 | P-6140   | Screw (connector pipe)   |



## Dust Bin

- |    |          |                                |
|----|----------|--------------------------------|
| 1  | P-111677 | Filter case                    |
| 2  | P-111678 | Cover, handle                  |
| 3  | P-111376 | Button, release                |
| 4  | P-111355 | Spring, release button         |
| 5  | P-10888  | Screw, handle cover            |
| 6  | P-111356 | Knob                           |
| 7  | P-9907   | Screw, knob                    |
| 8  | P-111357 | Cam, cleaning                  |
| 9  | P-111358 | Latch, arm                     |
| 10 | P-111359 | Cover, latch                   |
| 11 | P-00086  | Screws, latch cover            |
| 12 | P-111360 | Valve grommet                  |
| 13 | P-111361 | Lid, dust bin                  |
| 14 | P-111362 | Seal, filter                   |
| 15 | P-111363 | Seal, dust bin lid             |
| 16 | P-111364 | Filter                         |
| 17 | P-111365 | Spring, latch arm              |
| 18 | P-111366 | Cover, latch/bottom            |
| 19 | P-111367 | Spring (lid) assembly complete |