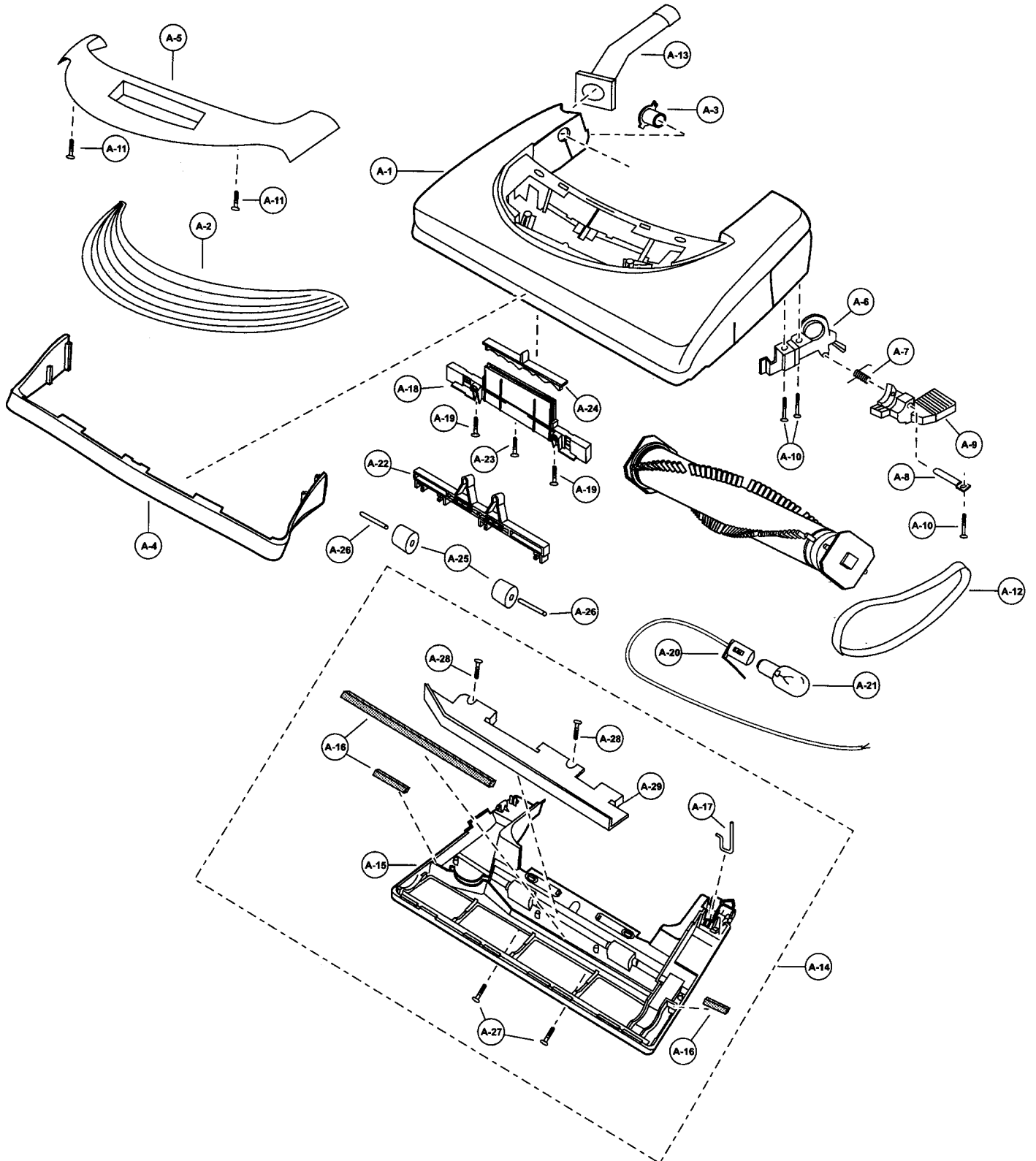


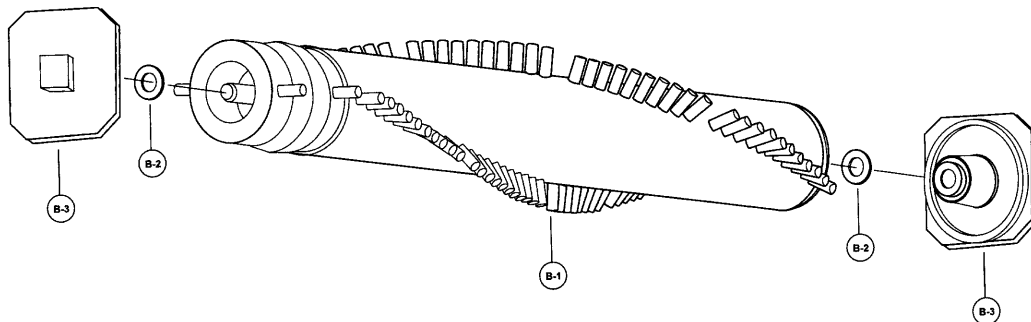
Nozzle Housing



- | | | |
|--|--|--|
| 1..... P-10453Nozzle Housing, V150 | 12..... P-V270BBelt, 2pk | 20..... P-9367Bulb Socket |
| 1..... P-10523Nozzle Housing, V200 | 13..... P-10304Nozzle Hose, V150 | 21..... P-7550Bulb, light |
| 1..... P-10539Nozzle Housing, V300 | 13..... P-10108Nozzle Pipe, V300,V315 | 22..... P-10528Slider |
| 1..... P-10817Nozzle Housing, V315 | 14..... P-10454Lower Plate Assy, V150 | 23..... P-6800Screw, slider support |
| 2..... P-10540Window, V300 | 14..... P-10524Lower Plate Assy, V200 | 24..... P-10527Knob, height adjustment |
| 2..... P-10818Window, V315 | 14..... P-10543Lower Plate Assy, V300 | 25..... P-9888Wheel |
| P-10456Window Cover, V150 | 14..... P-10821Lower Plate Assy, V315 | 26..... P-9889Shaft, wheel |
| P-10526Window Cover, V200 | 15..... P-10455Lower Plate, V150 | 26..... P-10357Shaft, wheel, V200 |
| 3..... P-2500Shaft, plastic | 15..... P-10525Lower Plate, V200 | 27..... P-6800Screw, lower plate |
| 3..... P-10819Shaft, plastic, V315 | 15..... P-10544Lower Plate, V300 | 28..... P-6140Screw, body, 10pk |
| 4..... P-10541Furniture Guard, V300 | 15..... P-10822Lower Plate, V315 | 29..... P-9766Body, lower plate |
| 4..... P-10820Furniture Guard, V315 | 16..... P-9860Packing, lower plate | P-78Plastic Holder |
| 5..... P-10542Light Cover, V300,V315 | 16..... P-10394Packing, lower plate, V150,V315 | P-9846Stop Latch Spring, V315 |
| 6..... P-9878Frame, handle release, V300/V15 | 17..... P-43Belt Guard, V150,V200 | P-10528Height Adjustment Cam, V315 |
| 7..... P-58Spring, pedal | 17..... P-9861Belt Guard, V300,V315 | P-2444Latch, V315 |
| 7..... P-9857Spring, pedal, V300,V315 | 18..... P-9863Slider Support | |
| 8..... P-513Shaft, pedal | 18..... P-10353Slider Support, V150 | |
| 9..... P-4720Pedal, handle release | 18..... P-111217Slider Support, V200 | |
| 10..... P-02181Screw, frame | 18..... P-10832Slider Support, V315 | |
| 11..... P-6140Screw, window cover | 19..... P-6140Screw, slider support | |

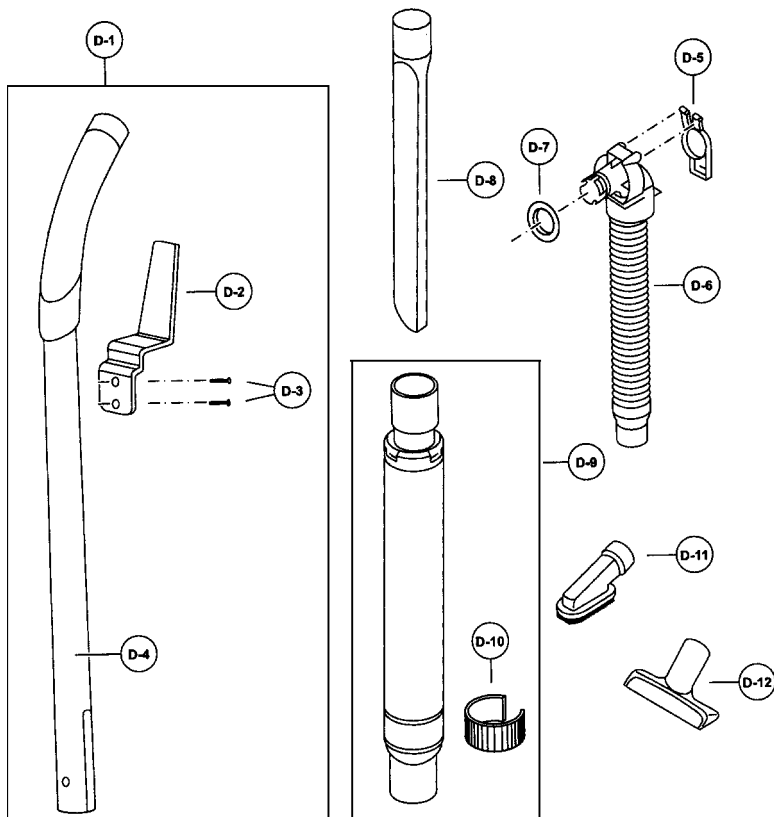
Agitator Assembly

- 1..... P-10439Agitator Unit
 1..... P-10809Agitator Unit, V315
 2..... P-0030Washer
 3..... P-9906End Cap



Handle, Hose & Attach-

- MODEL MC-V300, MC-V315 ONLY
- 1..... P-9509Handle Assembly
 2..... P-000633Cord Hook
 3..... P-6800Screw, cord hook
 4..... P-10560Handle
 5..... P-8972Suction Inlet Cover
 6..... P-10561Hose Unit, stretch
 7..... P-9894Packing, suction inlet
 8..... P-6069Crevice Tool
 9..... P-8931Wand, telescoping
 10..... P-10562Suction Control
 11..... P-6088Dusting Brush
 12..... P-6620Upholstery Nozzle



1.....P-10457.....Dust Compartment, V150	38.....P-6140.....Screw, motor case
1.....P-10529.....Dust Compartment, V200	39.....P-10533.....Motor Assy
1.....P-10563.....Dust Compartment, V300,V315	39.....P-000629.....Motor Assy, V150
2.....P-7330.....Screw, handle	40.....P-10393.....Carbon Brush, motor
3.....P-10545.....Carry Handle	41.....P-0293.....Motor Support, front
4.....P-10546.....Support Plate	42.....P-10338.....Motor Support, rear
5.....P-10547.....Tool Holder	42.....P-9911.....Motor Support, rear, V300,V315
6.....P-6806.....Protector Case	43.....P-9912.....Screw, motor flange
7.....P-692.....Spring, protector, blue	44.....N/A.....Motor Flange
7.....P-10388.....Spring, protector, yellow, V150	45.....P-93033.....Motor Cover
8.....P-000057.....Protector	46.....P-9931.....Noise Suppressor
9.....P-1806.....Protector Supporter	46.....P-99300.....Noise Suppressor, V300,V315
10.....P-8913.....Switch, on/off, V150	47.....P-5860.....Body Packing, left
10.....P-10530.....Switch, on/off, V200	48.....P-3990.....Body Packing, right
10.....P-10548.....Switch, on/off, V300	49.....P-000623.....Wire Connector, motor area
10.....P-10602.....Switch, on/off, V315	49.....P-10450.....Wire Connector, motor area,V315
11.....P-10389.....Rubber Protector	N/A.....Suction Inlet, V200
12.....P-10380.....Power Cord, 35 ft, V150	P-8972.....Cover, suction inlet, V150
12.....P-10531.....Power Cord, 50 ft, V200	P-8915.....Cover, suction inlet, V200
12.....P-10429.....Power Cord, 50 ft, V300	P-6140.....Screw, suction inlet, V150,V200
12.....P-10823.....Power Cord, 50 ft, V315	P-0036.....Brush Retainer Bracket, V150,V200
13.....P-00104.....Wire Tie, 10pk	P-8946.....Hose, V150
14.....P-16005.....Shaft Wheel	P-8917.....Hose, V200
15.....P-6115.....Washer, wheel	P-10391.....Cord Retainer, V150
16.....P-10441.....Wheel	P-10535.....Cord Retainer, V200
17.....P-74009.....Stopper, wheel	P-10459.....Cover Cap, V150
18.....P-2486.....Fitting, handle	P-10536.....Cover Cap, V200
19.....P-10549.....Supporter, handle	P-10460.....Handle Assy, V150
20.....P-8172.....Screw, handle supporter	P-10537.....Handle Assy, V200
21.....P-6140.....Screw, carry handle	P-10461.....Handle, V150
22.....P-6140.....Screw, tool holder	P-000631.....Handle, V200
23.....P-9829.....Filter, secondary electrostatic	P-000633.....Cord Hook, V150,V200
23.....P-10550.....Filter, secondary electrostatic, V300	P-6800.....Screw, cord hook, V150,V200
23.....N/A.....Filter, secondary electrostatic,, V315	P-10392.....Caution Label, V150,V200
P-3200.....Filter Supporter, V150,V200	P-6069.....Crevice Tool, V150
24.....P-10385.....Wire Cord	P-6088.....Dusting Brush, V150
24.....P-10551.....Wire Cord, V300,V315	P-8180.....Wand, with tabs, V150
25.....P-9912.....Screw, grounding	P-9837.....Hose Holder, V150
26.....P-000623.....Wire Connector, switch area	P-10464.....Hose Hook, V150
27.....P-4410.....Lead Wire, black	P-10463.....Hose Adaptor, V150
28.....P-30606.....Switch Cover,V150,V200	
28.....P-10552.....Switch Cover,V300,V315	
P-10443.....Latch, V150,V200	
29.....P-6140.....Screw, switch cover	
30.....P-10553.....Bumper	
31.....P-145M.....Paper Bag, type U6, micro, 3pk	
32.....P-10554.....Release Button, dust cover	
33.....P-10462.....Dust Cover	
33.....P-10555.....Dust Cover, V300	
33.....P-10824.....Dust Cover, V315	
34.....P-10556.....Filter Cover	
35.....P-10557.....Filter, electrostatic, exhaust	
36.....P-10558.....Filter, motor case	
37.....P-10458.....Motor Case, V150	
37.....P-8943.....Motor Case, V200	
37.....P-10559.....Motor Case, V300,V315	