

Ref. No.	Part No.	Description
1	59137018	Motor Canopy - HP
2	59137015	+ Canopy Bumper - LY
3	59137020	Canopy Spacer
4	59137021	Capacitor, Oil
5	59137022	Capacitor, Electrolytic
6	59137016	Motor, 1-1.2, HP AC 11 5V
7	59137017	+ Motor Case Decal
8	59137023	Motor Pulley & Bushing
10	59137025	Cam Tensioner
11	59137322	Pad Drive Shroud - LY
12	59137323	Flange Bearing
13	59137014	Shroud Bumper - LY
14	59137013	+ Shroud Decal
15	59137027	+ Plug Button
16	59137028	Lift Handle
17	59137029	+ Handle Cap
18	59137030	+ Handle Bracket
19	59137010	Chassis - C5029
21	59137032	Shaft
22	59137033	Drive Pulley
23	59137034	Pad Holder
24	59137345	Pad Lock Assem.
25	59137036	+ Drive Belt
26	59137037	Acorn Nut
27	59137011	Wheel (6")
28	59137133	Acorn Nut - C5029
29	59137039	Transport Wheel (4")
30	59137040	Split Pin
31	59137041	Shoulder Bolt
32	59137042	Handle Lock Knob
33	59137043	Handle Cord - 2W - 33
	59137339	Handle Cord - 3W - 33
34	59137141	Power Cord - 50'
35	59137006	Switch Box Cover
36	59137008	+ Switch Lever Sleeve - LY
37	59137121	+ Switch Lever
38	59137007	Handle Grip-LY
39	59137019	Switch
39a	59137046	Insulation Paper - Only
39b	59137047	Bracket - Only
40	59137048	Switch Lever Spring
42	59137009	+ Switch Box Decal
43	59137005	Switch Box
44	59137050	Circuit Breaker
45	59137051	Jumper Lead Assem.
46	59137052	Cord Hook
47	59137053	+ Handle Tube
48	59137054	+ Cap Plug
49	59137328	Pad Clamp
50	59137010	Chassis - F7095
51	59137038	+ Bolt - F7095

Note: All parts not listed are standard hardware items purchased locally.

Floor Machine / Wet Dry Vac Accessories

Models F7089, F7091, F7093



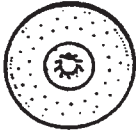
20' Bassine Brush
Part No. 59131103

17' Bassine Brush
Part No. 59131100



20" Union Mix Dry
Polishing Brush
Part No. 59131104

17" Union Mix Dry
Polishing Brush
Part No. 59131101



20" Pad Holder
Part No. 59131105

17" Pad Holder
Part No. 59131102



Clutch Plate
Part No. 59131047



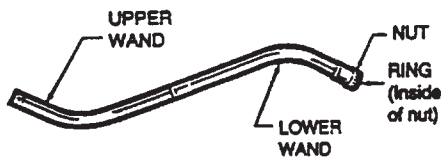
20" High Speed Pad Holder
Part No. 59131106 -
For Model F7093 only

Bristle Face, Part No. 59131077

Foam Pad, Part No. 59131078

PowerMax Wet Dry Vacs

Two Piece Wand Assembly
Part No. 59131299 (Finished Good)



Upper Wand, Part No. 38646054
Lower Wand, Part No. 38644045 (Inc. Nut and Ring)
Nut, Part No. 36116028
Ring, Part No. 33713004

Models S7085, S7087

Dry Pickup Filter Assembly
8 gallon, Part No. 59131108
12 gallon, Part No. 59131115

10'x 1-1/2' Hose
Part No. 59131107



All Commercial
Wet Dry Vacs

Models S7085, S7087

4'x 1-1/2' Chrome Plated Steel Floor Wand
wet/dry use, Part No. 59131109



Crevice Tool
Part No. 59131112



Dusting Brush with Adaptor
Part No. 59131113



Inserts, Part No. 59131229



14' Dry Pickup Nozzle, Part No. 59131136
Brush Back, Part No. 59131233



Blade Kit, Part No. 59131181



Models C5031, C5033, C5035

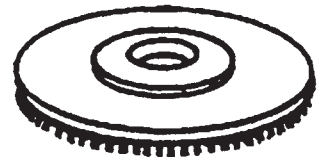
17" Shower Feed Brush - C5031
Part No. 48437014 (Service Part)

20" Shower Feed Brush - C5033, C5035
Part No. 59137104 (Service Part)

17" Pad Holder - C5031
Part No. 48436010 (Service Part)

20" Pad Holder - C5033, C5035
Part No. 59137102 (Service Part)

20" High Speed Pad Driver - C5035 ONLY
Part No. 48437019 (Service Part)



Models C5023, C5025, C5027, C5031, C5033, C5035



Clutch Plate, Part No. 59137338