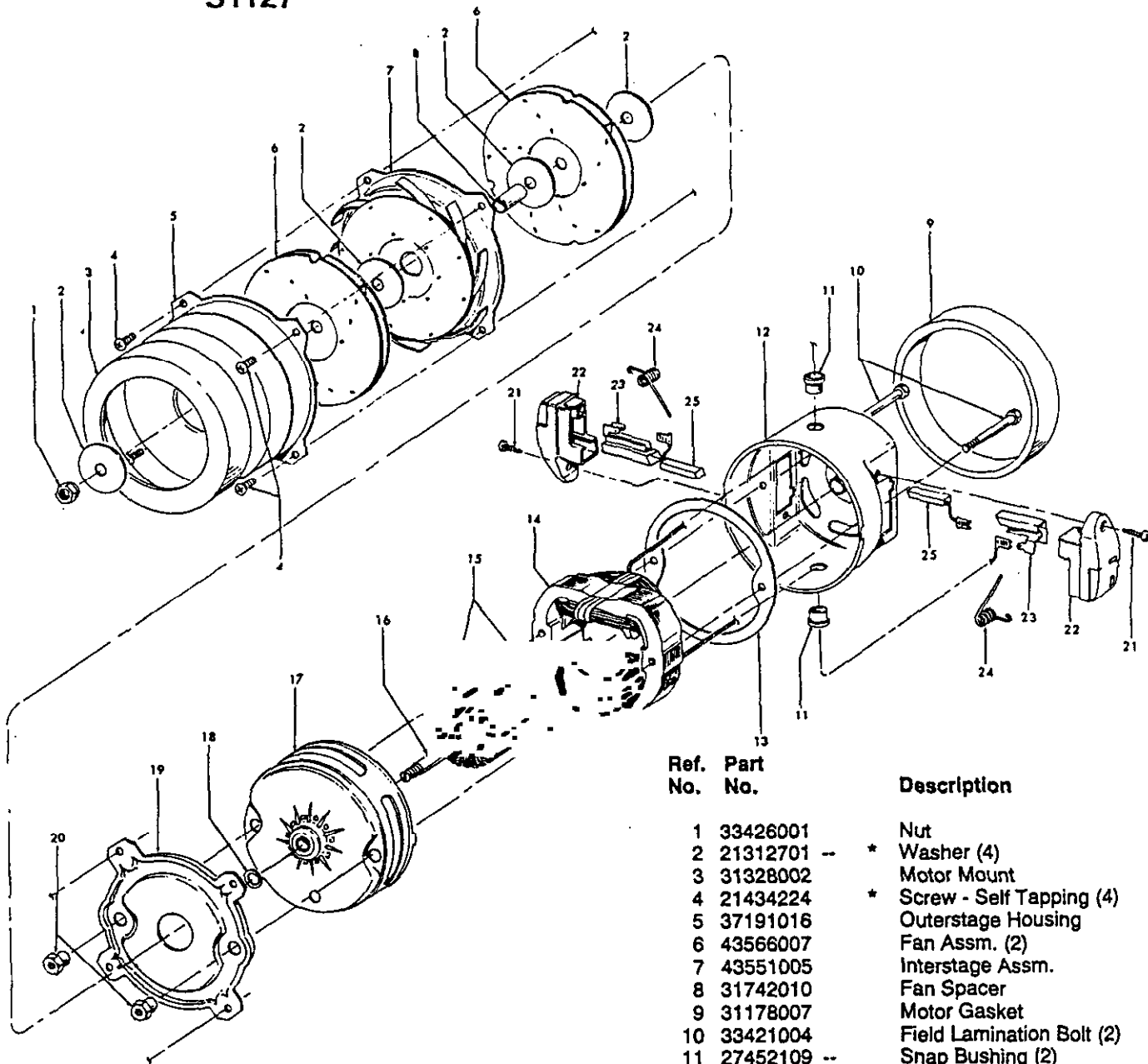


Motor

Models S1015-075, S1029-075, S1049, S1049-022, S1049-060, S1055, S1075, S1075-060, S1077, S1077-033, S1077-060, S1079, S1079-060, S1127



Ref. No.	Part No.	Description
1	33426001	Nut
2	21312701	* Washer (4)
3	31328002	Motor Mount
4	21434224	* Screw - Self Tapping (4)
5	37191016	Outerstage Housing
6	43566007	Fan Assm. (2)
7	43551005	Interstage Assm.
8	31742010	Fan Spacer
9	31178007	Motor Gasket
10	33421004	Field Lamination Bolt (2)
11	27452109	Snap Bushing (2)
	169702 BZ	Bushing - S1049-022, S1049-060, S1075-060, S1077-033, S1077-060, S1079-060, S1127
12	42937003	Motor Housing Assm. - Upper
13	31193011	Air Baffle Not Applicable - S1049-060, S1075-060, S1077-060, S1079-060, S1127
14	45311035	Field Assm. Comp.
	45311051	Field Assm. Comp. - S1049-022, S1049-060, S1077-033, S1077-060, S1127
15	167721	FW Compression Spring (2)
16	44765171	Armature Assm. Comp.
17	37191085	Motor Housing Assm. - Lower
18	31148002	Spacer
19	36322002	Interstage Mounting Plate
20	167695	EF Nut - Special (2)
21	21429406	* Screw (2)
22	167696	AG Brush Carrier (2)
23	168037	-- Brush Holder (2)
24	38353004	Spring (2)
25	167681	-- Motor Brush & Terminal Assm. (2)