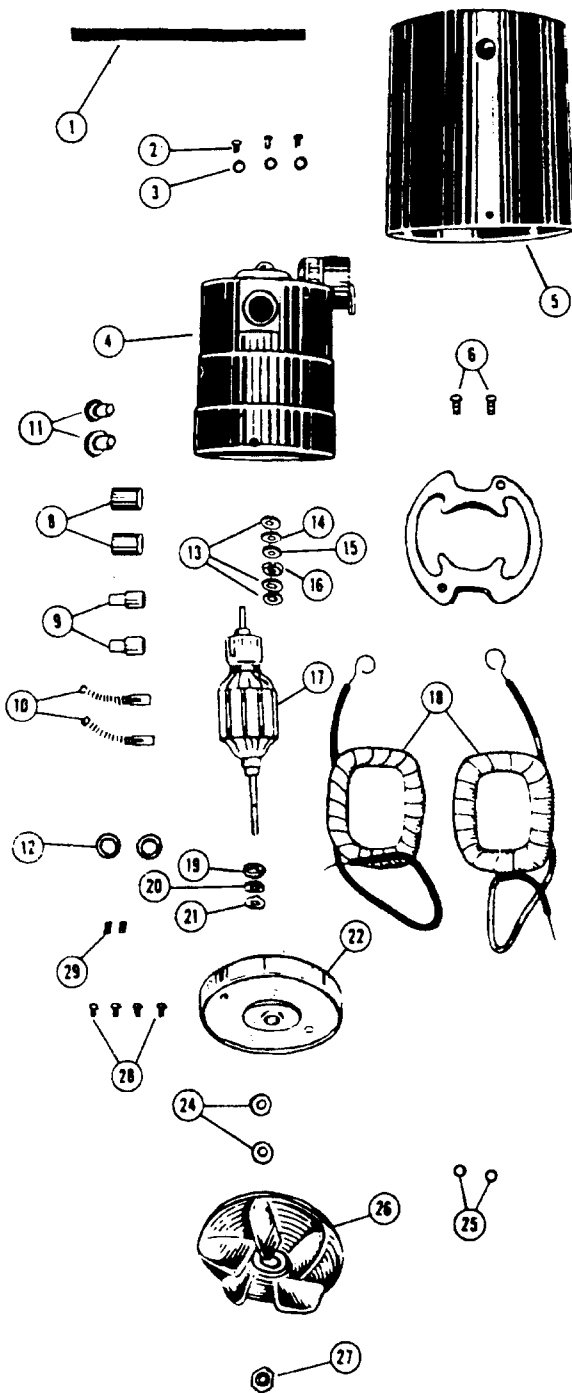


Motor

Model 2610, 2720, 2830, 2836



Ref. No.	Part No.	Description
	11236	+ Motor Assm. Less Fan
1	161950	+ Nozzle Sealing Gasket
2	50889	+* Screw
3	16586AY	+* Washer - Lock- Special
4	30686	+ Motor Casing & Bearing Assm.
5	713873	+ Motor Shell
6	22368008	+* Screw
8	161887	+ Motor Brush Holder Insulator
9	41026	+ Carbon Brush Holder
10	40555	+ Carbon Brush & Spring Assm.
11	804655	+* Motor Mount
12	41027	+ Carbon Brush Holder Cap
13	19958	+* Fiber Washer
14	15865	* Washer
15	903688	+* Felt Washer
16	903687	+* Cup Retainer
17	601755	+ Armature - 11.5V
18	20299	+ Field Coil - 115V
19	903689	+* Cup Retainer
20	903690	+* Felt Washer
21	903757	+* Key Washer
22	704894	+ Front Bottom Plate Brg. Assm.
24	161900	+* Washer
25	19249	+ Eyelet
26	41090	+ Fan
27	161898	+ Fan Nut
28	21772501	* Screw
29	19744	+* Set Screw
	808506	+ Armature - 12V
	808507	+ Field Coil - 12V
	804538	+ Carbon Brush - 12V