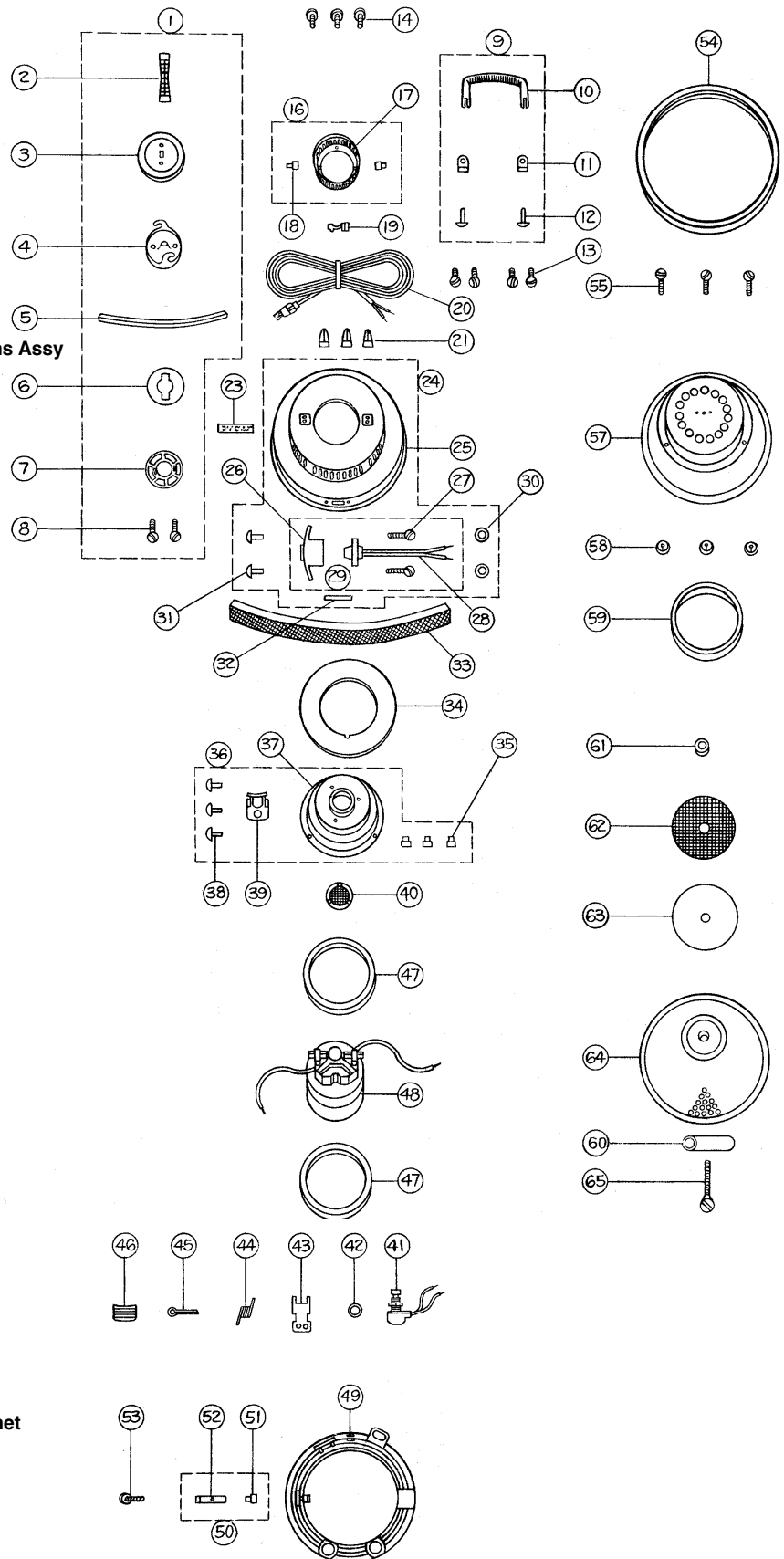


## Dome & Motor Assembly

## Model: PNG92 Princess

- 1 ..... FQ-GRPG9273 ..... Dome Cover Assy
- 2 ..... FQ-92314 ..... Handle
- 3 ..... FQ-92651 ..... Outer Dome Cover
- 4 ..... FQ-92650 ..... Inner Dome Cover
- 5 ..... FQ-31776 ..... Dome Sealing Gasket
- 6 ..... FQ-500790 ..... Deodorizer Felt
- 7 ..... FQ-500793 ..... Felt Retainer Spring
- 8 ..... FQ-31795 ..... Screw, handle
- 9 ..... N/A ..... Handle & Bracket Assy
- 10 ..... FQ-PG92724 ..... Handle
- 11 ..... FQ-PG92611 ..... Bracket
- 12 ..... FQ-350656A ..... Rivet
- 13 ..... FQ-31719 ..... Screw, for bracket
- 14 ..... FQ-33063 ..... Screw, dome connector
- 15 ..... FQ-GRPG9260 ..... Dome Assembly, complete
- 16 ..... FQ-GRPG9271 ..... Dome Connector Stamping & Pins Assy
- 17 ..... FQ-PG92652 ..... Dome Connector Stamping
- 18 ..... FQ-10514 ..... Connector Pin
- 19 ..... SS-34 ..... Cord Strain Relief, sold ea (R)
- 20 ..... FQ-92301 ..... Cord
- 21 ..... SS-71B ..... Wire Nut, box of 100 (R)
- 23 ..... FQ-PG92767 ..... Warning Label
- 24 ..... FQ-GRPG9239 ..... Dome Assy
- 25 ..... N/A ..... Dome
- 26 ..... FQ-31350 ..... Outlet Holder
- 27 ..... FQ-31320 ..... Screw
- 28 ..... FQ-33321 ..... Outlet
- 29 ..... FQ-GR3132 ..... Outlet & Holder Assembly
- 30 ..... FQ-11246 ..... Washer
- 31 ..... FQ-133054 ..... Rivet
- 32 ..... FQ-PG92766 ..... Outlet Label
- 33 ..... FQ-350787A ..... Filter Bat
- 33 ..... FQ-95787 ..... Filter Bat, foam
- 34 ..... FQ-31791 ..... Filter Bat Support
- 35 ..... FQ-33514 ..... Connector Pin
- 36 ..... FQ-GR3172 ..... Upper Motor Support Assembly
- 37 ..... FQ-31731 ..... Upper Motor Support
- 38 ..... FQ-16439 ..... Rivet
- 39 ..... FQ-31747 ..... Switch Bracket
- 40 ..... FQ-31797 ..... Motor Protective Screen
- 41 ..... FQ-31302 ..... Switch
- 41 ..... MP-113 ..... Switch, (R)
- 42 ..... FQ-153318 ..... Switch Lockwasher
- 43 ..... FQ-500750 ..... Switch Lever
- 44 ..... FQ-500752 ..... Switch Lever Spring
- 45 ..... FQ-350751 ..... Switch Lever Hinge Pin
- 46 ..... FQ-PG92749 ..... Switch Lever Pad
- 47 ..... FQ-350060 ..... Motor Support Gasket
- 48 ..... FQ-GR9509 ..... Motor
- 48 ..... L-11631100 ..... Motor, 2 fan, ball/sleeve (R)
- 48 ..... L-11631101 ..... Motor, 2 fan, ball/ball (R)
- 49 ..... FQ-GRPG9261 ..... Attachment Holder
- 49 ..... FQ-22G ..... Attachment Holder, grey (R)
- 50 ..... FQ-GRA7201 ..... Spring & Pin Assy
- 51 ..... FQ-72003 ..... Retainer Pin
- 52 ..... FQ-A72002 ..... Retainer Spring
- 53 ..... FQ-72008 ..... Screw
- 54 ..... FQ-31775 ..... Dome Gasket
- 55 ..... FQ-350012A ..... Screw
- 57 ..... FQ-31769 ..... Lower Motor Support
- 58 ..... FQ-31146 ..... Palnut
- 59 ..... N/A ..... Secondary Filter Support Ring
- 60 ..... N/A ..... Spacing Tube
- 61 ..... N/A ..... Secondary Filter Support Grommet
- 62 ..... FQ-31798 ..... Secondary Filter Screen
- 63 ..... FQ-350450 ..... Secondary Filter
- 64 ..... FQ-31770 ..... Perforated Cone
- 65 ..... FQ-350712 ..... Screw, cone retainer
- FQ-GR3117 ..... Filter Screen, w/ ring (#59,62)



## Dirt Container Assembly

## Model: PNG92 Princess

- 1 ..... N/A ..... Dirt Container Assembly
- 3 ..... FQ-PG92418 ..... Dirt Container
- 4 ..... FQ-11246 ..... Washer
- 5 ..... FQ-500778 ..... Clamp Spring Stamping
- 5A ..... FQ-GRPG9246 ..... Clamp Assembly, complete
- 6 ..... FQ-500779 ..... Clamp Spring
- 7 ..... N/A ..... Rivet
- 8 ..... FQ-GRPG9274 ..... Clamp Assembly
- 9 ..... FQ-PG92781 ..... Clamp
- 10 ..... FQ-PG92786 ..... Protective Pad
- 11 ..... FQ-GRPG9275 ..... Clamp & Pad Assembly
- 12 ..... FQ-224780 ..... Clamp Link
- 13 ..... FQ-224717 ..... Clamp Rivet
- 14 ..... FQ-A224784 ..... Clamp Link Rivet
- 15 ..... FQ-PG92765 ..... Warning Label
- 17 ..... FQ-28329 ..... Rivet
- 18 ..... FQ-200451 ..... Dirt Deflector
- 19 ..... FQ-10514 ..... Inlet Pin
- 20 ..... FQ-350406 ..... Inlet
- 21 ..... FQ-GR35043 ..... Inlet & Pins Assembly
- 22 ..... FQ-92407 ..... Inlet Gasket
- 23 ..... FQ-PG92419 ..... Nameplate
- 24 ..... FQ-PG92430 ..... Gasket
- 25 ..... FQ-GRPG9262 ..... Caster Set
- 26 ..... FQ-PG92780 ..... Caster Plate
- 27 ..... FQ-42786 ..... Pads
- 28 ..... FQ-57784 ..... Rivet
- 29 ..... FQ-92782 ..... Caster
- 30 ..... FQ-PG92783 ..... Retainer Ring

### ENVIROPURE Activated Charcoal Filter

**Helps remove dangerous gases and toxic chemicals from the air in your home!**

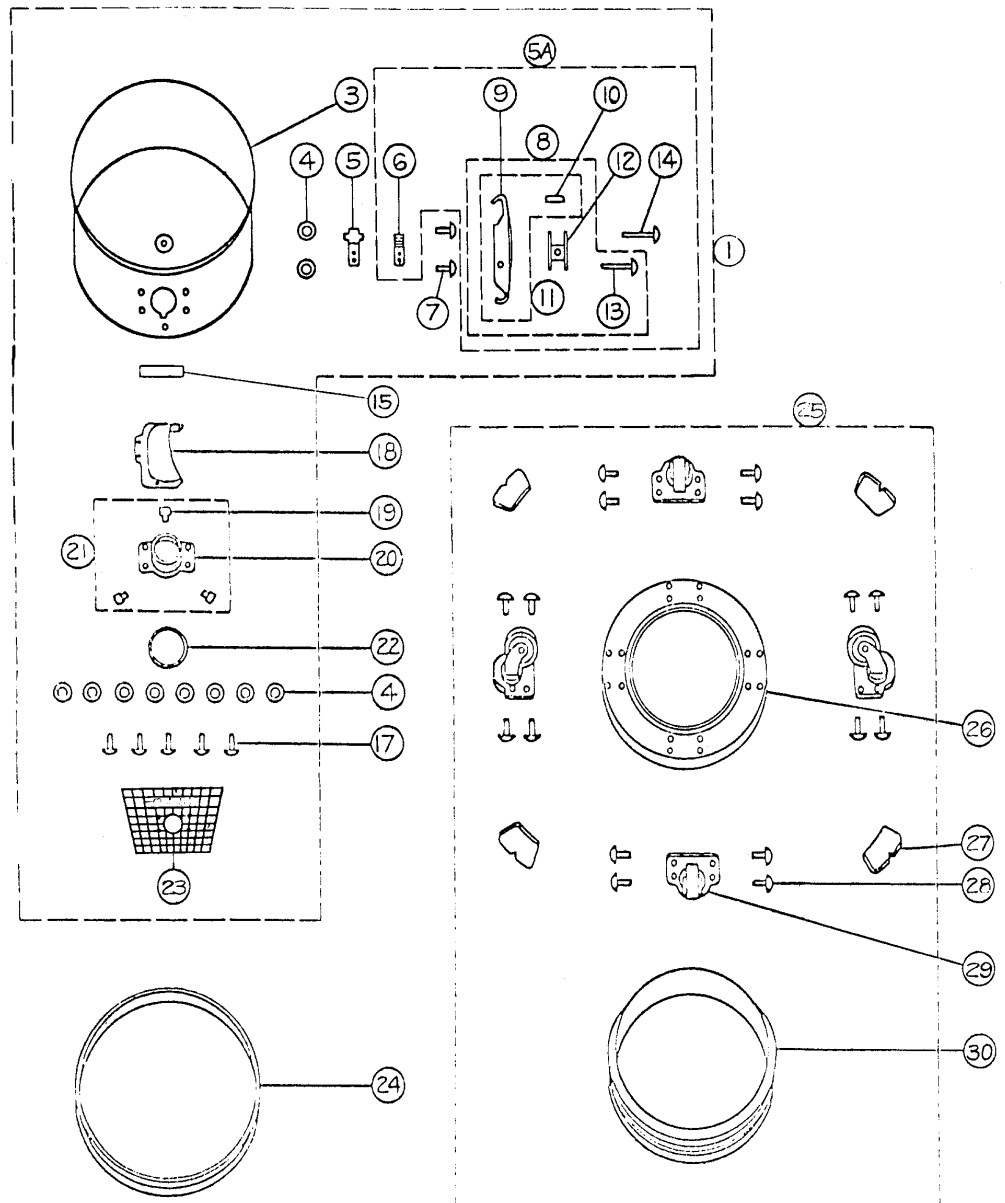
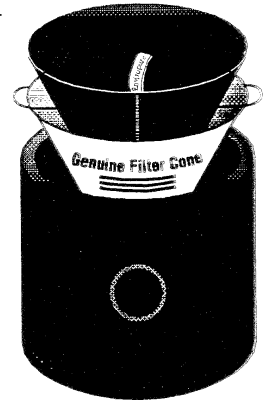
- \*traps over 300 toxic pollutants and odors for a safer, healthier home environment
- \*fits all HMI canisters (use with filter cone)
- \*helps remove tobacco smoke, organic gases, pet odors, Benzene, Chloroform, Methylene Chloride, Toulene ...
- \*remains active for approx. 3 months
- \*sold per 4 pack

**FQ-CF4**

### CAPTIVA Cloth Filter

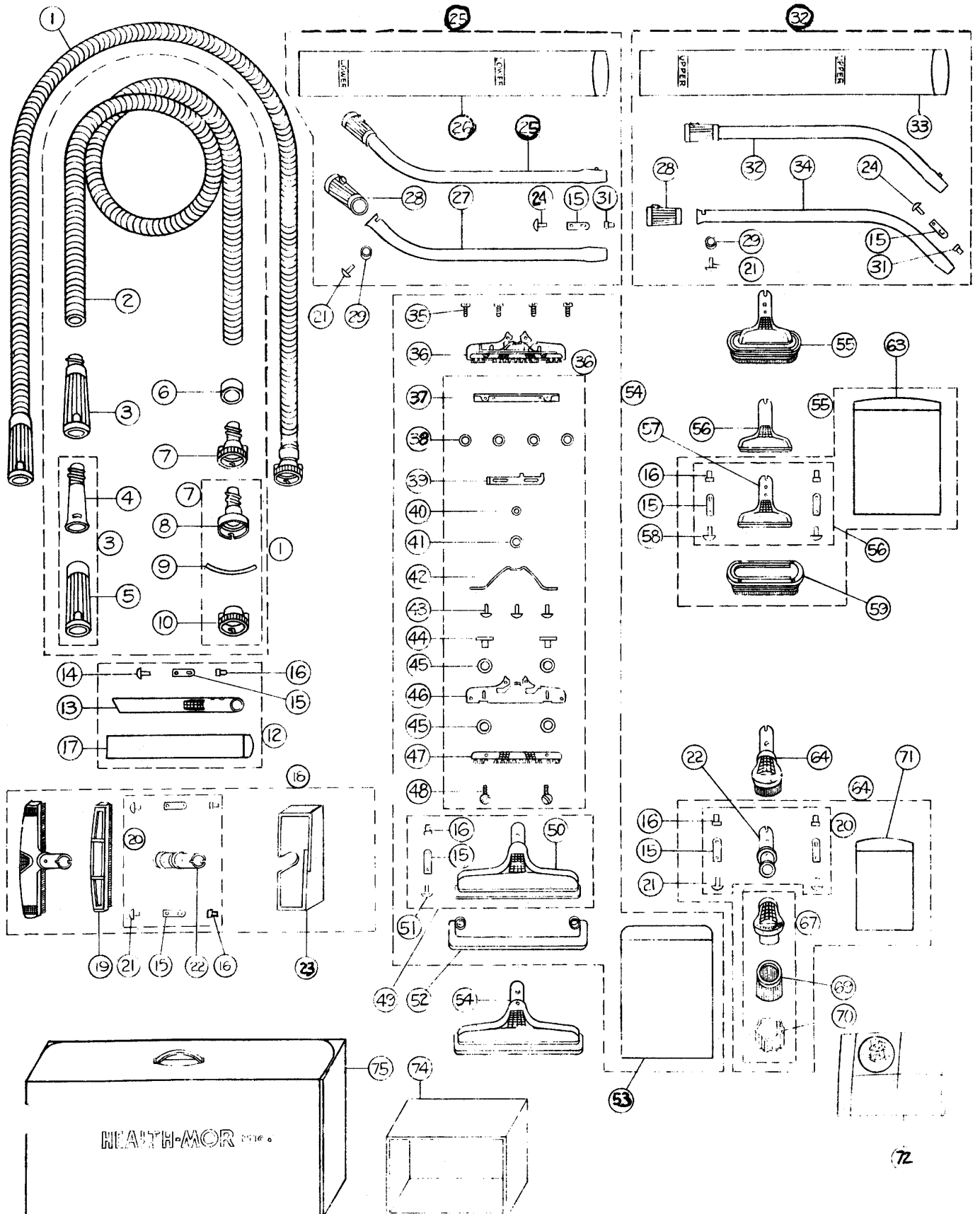
- \*fits the ENVIROPURE system for the Majestic, Princess and the DEFENDER AIR PURIFIER
- \*sold each

**FQ-CAP1**



# FILTER QUEEN

## Model: SSG Princess Attachments

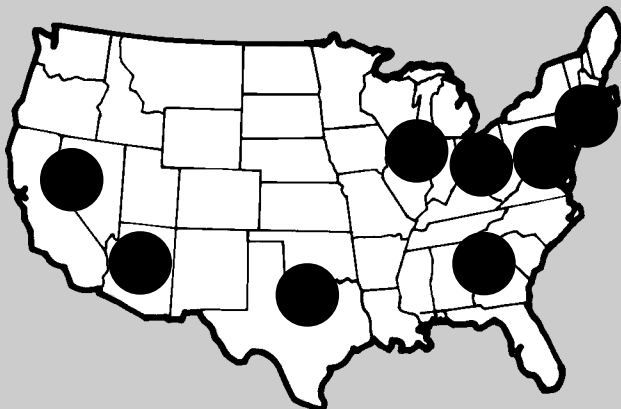


## Model: SSG Princess Attachments

1	FQ-GRPG9284	Hose Assy, complete, straight suction	36	FQ-GR3122	Brush & Brush Guide Assy
2	FQ-PG92802	Hose Only, straight suction	37	FQ-31223	Brush Holder
3	N/A	Adaptor Tube Assy	38	FQ-11246	Washer
4	FQ-PG92811	Adaptor Tube	39	FQ-200225	Brush Slide
5	FQ-PG92842	Tube Seal	40	FQ-94276	Slide Tension Washer
6	FQ-PG92814	Ferrule	41	FQ-31246	Washer
7	FQ-GRPG9280	Connector Assembly	42	FQ-200220A	Brush Tension Spring
8	N/A	Connector Tube & Base Assy	43	FQ-500226	Shouldered Rivet
9	FQ-3407	Gasket	44	FQ-500241	Brush Guide Stud
10	FQ-PG92858	Connector Cover	45	FQ-500243	Fibre Washer
12	FQ-GRPG9279	Crevice Tool Complete	46	FQ-31214	Brush Guide
13	FQ-PG92801	Crevice Tool Only, w/o pin	47	FQ-31224	Floor Brush
14	FQ-16439	Rivet	48	FQ-33063	Brush Screw
15	FQ-350231	Retainer Spring	49	FQ-GRPG9225	Nozzle Assembly
16	FQ-156232	Retainer Pin	50	FQ-PG92209	Floor Nozzle
18	FQ-GRPG9281	Floor Brush, complete, 10"	51	FQ-500212	Rivet
19	FQ-230806	Bristled Insert	52	FQ-PG92201	Bumper
20	FQ-GRPG9287	Adaptor Assy	54	FQ-GRPG9220	Nozzle & Brush Assy, complete
21	FQ-8241	Rivet	55	FQ-GRPG9227	Upholstery Nozzle & Brush Assy, complete
22	N/A	Adaptor	56	FQ-GRPG9228	Upholstery Nozzle & Pin Assy
23	FQ-36904	Brush Protector, 10"	57	FQ-PG92807	Nozzle
25	FQ-GRPG9277	Lower Wand Assy, complete	58	FQ-133054	Rivet
27	FQ-500803	Lower Wand	59	FQ-PG92291	Brush
28	FQ-PG92842	Tube Seal	64	FQ-GRPG9282	Dusting Brush Assy, round
29	FQ-156278	Stop Sleeve	67	FQ-GRPG9283	Round Brush Assembly
31	FQ-97232	Retainer Pin	69	FQ-33806	Bristled Insert
32	FQ-GRPG9278	Upper Wand Assy, complete	72	FQ-GR9247	Filter Cones, 12 pack
34	FQ-500823	Upper Wand			
35	FQ-31215	Screw, brush guide			

# 8 Convenient Locations Across the Country

*Mean Faster Delivery and Lower Shipping Costs for You!*



**Austell, Georgia**  
**Columbus, Ohio**  
**Elkridge, Maryland**  
**Grand Prairie, Texas**  
**Niles, Illinois**  
**Phoenix, Arizona**  
**Sparks, Nevada**  
**Westfield, Massachusetts**