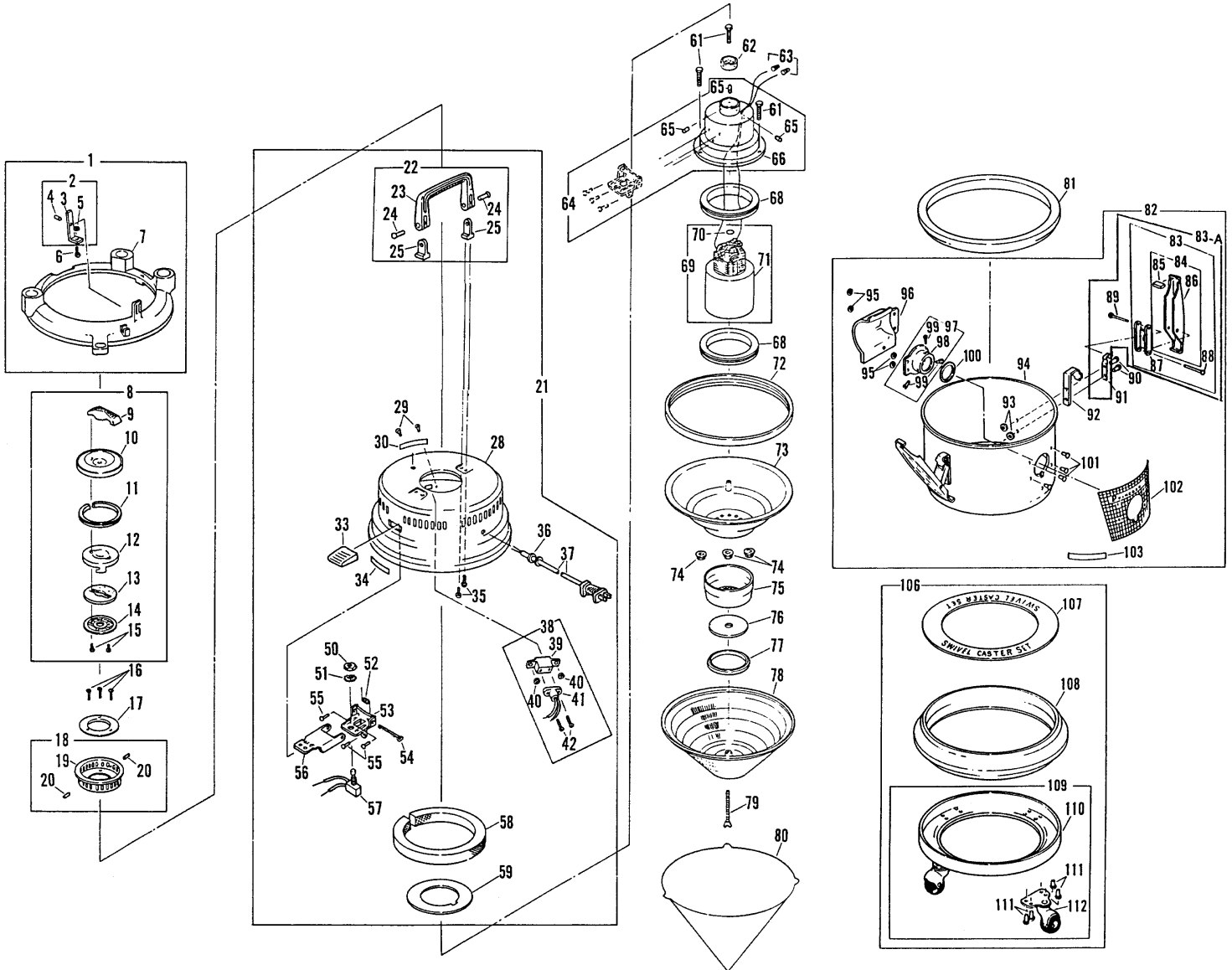


FILTER QUEEN

Model: Princess PG92, PG93



FILTER QUEEN

Model: Princess PG92, PG93

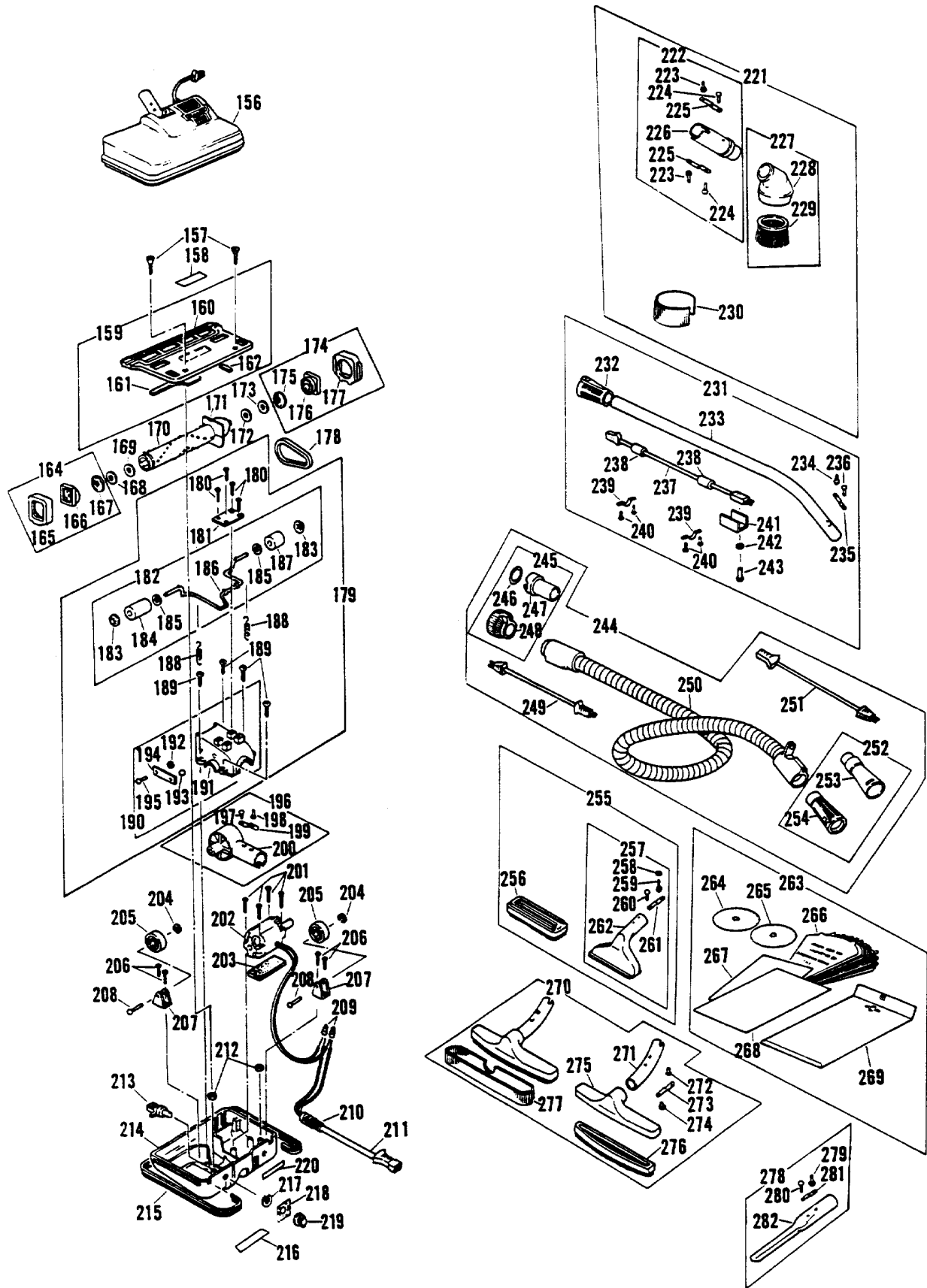
1	FQ-GRPG9261	Attachment Holder Assy	77	FQ-31788	Retainer, secondary filter support
2	FQ-GRA7201	Spring and Pin Assy	78	FQ-B31770	Perforated Cone Support
3	use #3	Retainer Spring	79	FQ-350712P	Screw
4	use #2	Retainer Pin	80	FQ-92404	Patented Cellulose Filter Cone
5	use #2	Lockwasher	81	FQ-PG92430	Gasket, dirt container
6	use #2	Screw	82	FQ-GRPG9240	Dirt Container Assy, complete, PG92
7	use #2	Attachment Holder	82	FQ-GRPG9340	Dirt Container Assy, complete, PG93
8	FQ-GRPG9273	Dome Cover & Handle Assy	83	FQ-GRPG9274	Clamp Assy, dirt container
9	FQ-92314	Dome Cover Handle, light grey	84	FQ-GRPG9275	Clamp & Protective Pad Assy
10	FQ-92651	Dome Cover, grey	85	FQ-PG92786	Clamp Protective Pad
11	FQ-31776	Gasket, dome cover	86	FQ-PG92781	Clamp, painted grey
12	FQ-J95650	Stamping, inner dome cover	87	FQ-224780	Clamp Link
13	FQ-500790	De-Odorizer Felt	88	FQ-224717B	Rivet, for clamp & link
14	FQ-A500793	Retainer Spring, de-odorizer felt	89	FQ-A224784	Rivet
15	FQ-31795P	Screw	90	FQ-28329	Rivet
16	FQ-33063P	Screw	91	FQ-500779	Spring, clamp
17	N/A	Patent Plate, PG92	92	FQ-500778	Stamping, clamp spring
17	N/A	Patent Plate, PG93	93	FQ-11246	Washer
18	FQ-GRK35071	Connector Stamping & Pins Assy	94	use #82	Dirt Container, light grey
19	use #18	Dome Connector Stamping	95	FQ-11246	Washer
20	use #18	Locking Pins	96	FQ-200451	Deflector Stamping
21	FQ-GRPG9260	Dome Assembly, complete	97	FQ-GR35043	Container Inlet & Pin Assy
22	FQ-GRPG9266	Handle & Bracket Assy	98	FQ-350406	Inlet Stamping
23	use #22	Carrying Handle, grey	99	FQ-10514	Locking Pin
24	use #22	Rivet	100	FQ-92407	Gasket, inlet
25	use #22	Handle Bracket, light grey	101	use #82	Rivet
28	FQ-PG92653	Dome, lt. grey, painted	102	FQ-PG92419	Label, dirt container, PG92
29	FQ-133054	Rivet, tubular	102	FQ-PG92419A	Label, dirt container, "Princess 3", front, PG93
30	FQ-PG92766	Label, outlet	103	FQ-PG92765	Label, warning
33	FQ-PG92749	Cover, switch lever	106	FQ-GRPG9262	Caster Set Assy, PG92
34	FQ-PG92767	Warning Decal, cellulose filter	106	FQ-GRPG9262A	Caster Set, PG93
35	FQ-31719P	Screw	107	FQ-95905	Protective Shield, black
36	FQ-31306	Strain Relief	108	FQ-PG92783	Caster Ring
37	FQ-92301	Attachment Cord, grey, PG92	109	FQ-GRPG9262	Caster & Plate Assy, PG92
37	FQ-PG9230125	Attachment Cord, PG93	109	FQ-GRPG9262A	Caster & Plate Assy, PG93
38	FQ-GR9532	Outlet & Holder Assy	110	use #109	Caster Plate, grey
39	FQ-95350	Outlet Holder	111	use #109	Rivet
40	FQ-11246	Washer	112	FQ-079	Caster
41	FQ-33321	Outlet			
42	FQ-31320P	Screw, for holder & outlet			
49	FQ-11246	Washer			
50	no #	Hex Nut, switch			
51	FQ-153318	Lockwasher, switch			
52	FQ-500752	Spring, switch lever			
53	use #64	Bracket, switch			
54	FQ-350751	Hinge Pin, switch lever			
55	use #64	Rivet			
56	FQ-500750	Switch Lever, nickel-plated			
57	FQ-31302	Switch			
58	FQ-95787W	Silencing Filter			
59	FQ-31791	Filter Support			
61	FQ-350012P	Screw			
62	FQ-31797A	Protective Screen			
63	FQ-A239760	Wire Connector			
64	FQ-CR3172	Upper Motor Support & Pins Assy			
65	use #64	Connector Pin			
66	FQ-31731	Motor Support, upper, black			
68	FQ-350060	Motor Support, rubber			
69	FQ-GR9509	Motor Unit & Insulating Disc Assy			
70	N/A	Motor Insulating Disc, fiber			
71	use #69	Motor, 1 speed			
72	FQ-31775	Gasket, dome			
73	FQ-31769	Motor Support, lower, black			
74	FQ-31146A	Kepsnut, 10-32			
75	FQ-31798	Secondary Filter Support, black			
76	FQ-95450	Secondary Filter			

**Hesco Accepts
Visa, MasterCard,
Discover, Bravo,
Private Issue and
American Express**

FILTER QUEEN

Fits Princess PG92, PG93

Model: PN, PN-10 Princess Attachments



Fits Princess PG92, PG93

Model: PN, PN-10 Princess Attachments

156	FQ-GRPG4820	... Nozzle Assembly, PN	219	FQ-PG48221 Knob, height adjustment, grey
156	FQ-GRPG4820A	Nozzle Assembly, PN-10	220	FQ-PG92765 Warning Label, electric shock...
157	FQ-48063P Screw, PN	221	FQ-GRPG9282	... Round Brush Assy, complete, dark grey
157	FQ-A88215P Screw, PN-10	222	use #221 Adaptor Assy, dark grey
158	N/A Information Plate, serial #	223	FQ-156232 Retainer Pin
159	FQ-GRA5224 Bottom Plate Assy	224	use #221 Rivet
160	use #159 Bottom Plate	225	use #221 Spring, retainer
161	use #159 Seal Gasket, bottom plate	226	use #221 Round Brush Adaptor, grey
162	use #159 Sealing Gasket Strip	227	use #221 Round Brush Assy, dark grey
164	FQ-GR4823 Brush Bearing Assy	228	use #221 Body, round brush
165	FQ-48274 Brush Mount, rubber	229	FQ-33806 Bristled Insert, round brush
166	use #164 Bearing Cover	230	use #221 Sleeve, cardboard, round
167	FQ-48267 Washer, dirt seal, bearing, large felt	231	FQ-GRPG4830	... Handle Tube Assembly
168	FQ-48216 Washer, brush shaft, small felt	232	FQ-PG48842 Tube Seal, grey
169	FQ-48246 Washer, steel	233	use #231 Handle Tube
170	FQ-GR4821 Brush Roll Assembly, short	234	FQ-97232 Retainer Pin
171	FQ-52228A Dirt Seal, belt, form fit cardboard, PN	235	use #231 Spring, retainer
171	FQ-88228 Dirt Seal, belt, form fit cardboard, PN-10	236	use #231 Rivet
172	FQ-48246 Washer, steel	237	FQ-GRPG4836	... Handle Cord, light grey
173	FQ-48216 Washer, brush shaft, small felt	238	use #237 Fiberglass Sleeve, on cord
174	FQ-GR5223 Bearing Assembly, brush roll	239	FQ-48305 Cord Clip, nickel plated
175	FQ-48267 Washer, dirt seal, bearing, large felt	240	FQ-48329 Pop Rivet
176	use #174 Bearing Cover	241	FQ-48304 Clamp, cord connector
177	FQ-52274 Brush Mount, rubber	242	FQ-J48276 Washer, clamp-on
178	FQ-48260 Belt, sold ea	243	FQ-J48717 Pop Rivet
178	FQ-206 Belt, sold ea (R)	244	FQ-GRPG4884	... Hose Assembly, grey, PN
179	FQ-GRPG4827	... Roller Arm & Retainer Assy	244	FQ-GRPG488410	Hose Assembly, grey, PN-10
180	FQ-56237 Screw	245	FQ-GRPG4880	... Hose Connector Assy, complete
181	FQ-48282 Retainer Plate, roller arm	246	FQ-3407 Gasket, hose connector
182	FQ-GR5222 Roller Arm Assy	247	use #245 Hose Connector Assembly
183	FQ-48276 Pushnut Fastener	248	use #245 Cover, hose connector, grey
184	FQ-52283L Roller, left	249	FQ-PG48821A	... Male Pigtail, princess, grey
185	FQ-48243 Washer, nylon	250	FQ-PG48802 Electric Hose, princess, grey, PN
186	FQ-52281 Roller Arm	250	FQ-PG4880210	.. Electric Hose, princess, grey, PN-10
187	FQ-52283R Roller, right	251	FQ-PG48822 Female Pigtail, princess, grey
188	FQ-48284 Spring, roller arm	252	FQ-GRPG4885	... Adaptor Tube Assy
189	FQ-33719 Screw	253	use #252 Hose Adaptor Tube
190	FQ-GRPG4826	... Retainer Assy, nozzle adaptor	254	use #252 Tube Seal, grey
191	use #190 Retainer, for adaptor, grey	255	FQ-GRPG9227	... Nozzle & Brush Assy, 6"
192	use #190 Washer	256	FQ-PG92291 Brush, 6", princess, grey
193	use #190 Hi-Carbon Ball	257	FQ-GRPG9228	... Nozzle & Pins Assy, 6"
194	use #190 Spring, ball retainer	258	use #257 Washer
195	use #190 Rivet	259	FQ-156232 Retainer Pin
196	FQ-GRPG4887	... Nozzle Adaptor Assy, dark grey	260	use #257 Rivet
197	use #196 Rivet	261	use #257 Retainer Spring
198	use #196 Retainer Pin	262	use #257 Nozzle, 6", grey
199	use #196 Spring, retainer	263	FQ-GR9247 Envelope, w/ filter cones
200	use #196 Adaptor, grey power nozzle	264	FQ-350450 Secondary Filter, paper, larger
201	FQ-48063P Screw	265	FQ-95450 Secondary Filter, paper, smaller
202	FQ-GR4808GS	... Power Nozzle Motor	266	use #263 Patented Cellulose Filter Cone
203	FQ-48219 Sponge, sound absorbing, motor	267	use #263 Warning Sheet
204	FQ-48251 Retaining Ring, industrial	268	use #263 Info Sheet, secondary filter
205	FQ-48248 Wheel, black	269	use #263 Envelopes, Pr-101
206	FQ-31215 Screw	270	FQ-GRPG8881	... Brush Assy, 10", grey
207	FQ-52247 Bracket, wheel	271	use #270 Elbow, wand
208	FQ-52249 Shaft, wheel	272	FQ-97232 Retainer Pin
209	FQ-A48760 Wire Connector	273	use #270 Retainer Spring
210	FQ-56306 Strain Relief	274	use #270 Rivet
211	FQ-PG48323 Nozzle Cord, grey	275	use #270 Brush Body, 10"
212	FQ-48213 On-Sert Fastener	276	FQ-J230806 Brush Insert
213	FQ-52225 Cam	277	use #270 Protector
214	FQ-PG48209 Body, power nozzle, grey	278	FQ-GRPG9279	... Crevice Tool & Pin Assy
215	FQ-PG48201 Bumper, grey	279	FQ-156232 Retainer Pin
216	FQ-PG48706 Nameplate, PN	280	use #278 Rivet
216	FQ-PG48706A	... Nameplate, PN-10	281	use #278 Retainer Spring
217	FQ-52222 Retaining Ring, industrial	282	use #278 Crevice Tool, grey
218	FQ-PG48244 Indicating Plate, hi-lo				