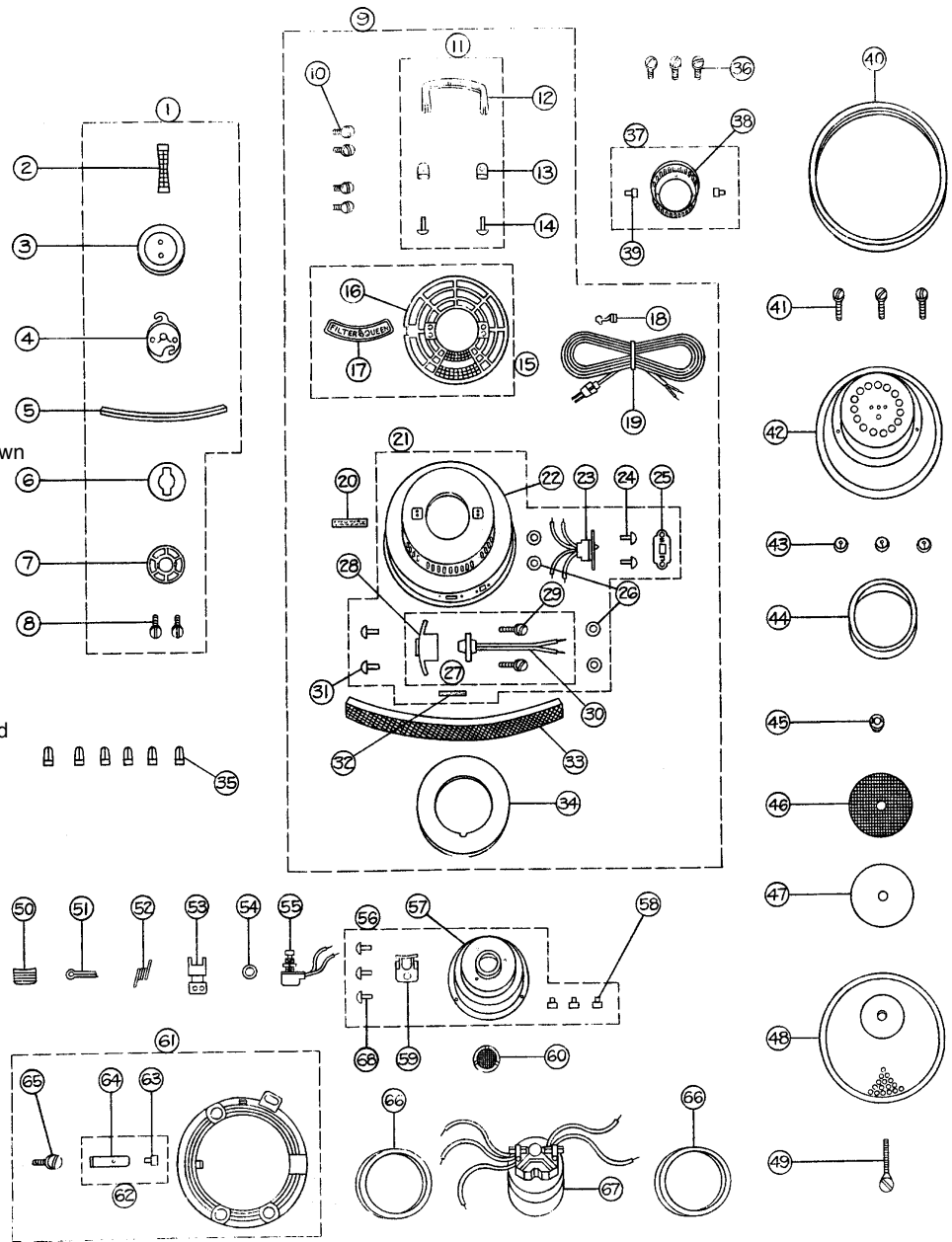


FILTER QUEEN

Dome Assembly

Model: D31X, K31X, D33

- 1 FQ-GRK50073 Dome Cover Assy
- 2 FQ-500314 Handle
- 3 FQ-D500651 Outer Dome Cover
- 4 FQ-350650 Inner Dome Cover
- 5 FQ-31776 Sealing Gasket, dome
- 6 FQ-500790 Felt Pad, air scent
- 7 FQ-500793 Retainer Spring, pad
- 8 FQ-31795 Screw
- 9 FQ-GRQX3160 ... Dome Assy, complete, brown, D31X, K31X
- 9 FQ-GRM3360 Dome Assy, complete D33
- 10 FQ-33719 Screw
- 11 FQ-GR35066 Handle & Bracket Assy
- 12 FQ-350724A Handle
- 13 FQ-350611 Bracket
- 14 FQ-350656A Rivet
- 15 FQ-GRLD3167 ... Grille, w/ nameplate, brown
- 15 FQ-GRLD3367 ... Grille, w/ nameplate, chrome
- 17 FQ-L33706 Nameplate
- 18 FQ-31306 Strain Relief
- 19 FQ-E31301 Attachment Cord, D31X, K31X
- 19 FQ-E33301 Attachment Cord, D33
- 20 FQ-31767 Warning Label
- 21 FQ-GRK3339 Dome Assembly
- 22 FQ-K33653 Dome
- 23 FQ-GRB3331 Switch, w/ leads, 2 speed
- 24 FQ-8241 Rivet
- 25 FQ-F33303 Indicating Plate
- 26 FQ-11246 Washer
- 27 FQ-GR3132 Outlet & Holder Assy
- 28 FQ-31350 Outlet Holder
- 29 FQ-31320 Screw
- 30 FQ-33321 Outlet
- 31 FQ-133054 Rivet
- 32 FQ-33767 Label, outlet
- 33 FQ-350787A Filter Bat
- 34 FQ-31791 Support, filter bat
- 35 FQ-A239760 Solderless Connector
- 36 FQ-33063 Screw
- 37 FQ-GR35071 Connector Stamping and Pins Assy
- 38 FQ-350652 Dome Connector Stamping
- 39 FQ-10514 Connector Pin
- 40 FQ-31775 Gasket, dome
- 41 FQ-350012A Screw
- 42 FQ-31769 Lower Motor Support
- 43 FQ-31146 Palnut
- 44 FQ-31788 Support Ring, secondary filter, D31X, K31X
- 44 FQ-31788 Support Ring, secondary filter, D33
- 46 FQ-31798 Support Screen
- 47 FQ-31770 Secondary Filter
- 48 FQ-350770 Perforated Cone
- 50 FQ-350749 Pad, switch lever
- 51 FQ-350751 Hinge Pin, switch lever
- 52 FQ-500752 Spring, switch lever
- 53 FQ-500750 Lever, switch
- 54 FQ-153318 Lockwasher, switch
- 55 FQ-31302 Switch
- 56 FQ-GR3172 Upper Motor Support Assy
- 57 FQ-31731 Upper Motor Support
- 58 FQ-33514 Connector Pin
- 59 FQ-31747 Bracket, switch
- 60 FQ-31797 Protective Screen

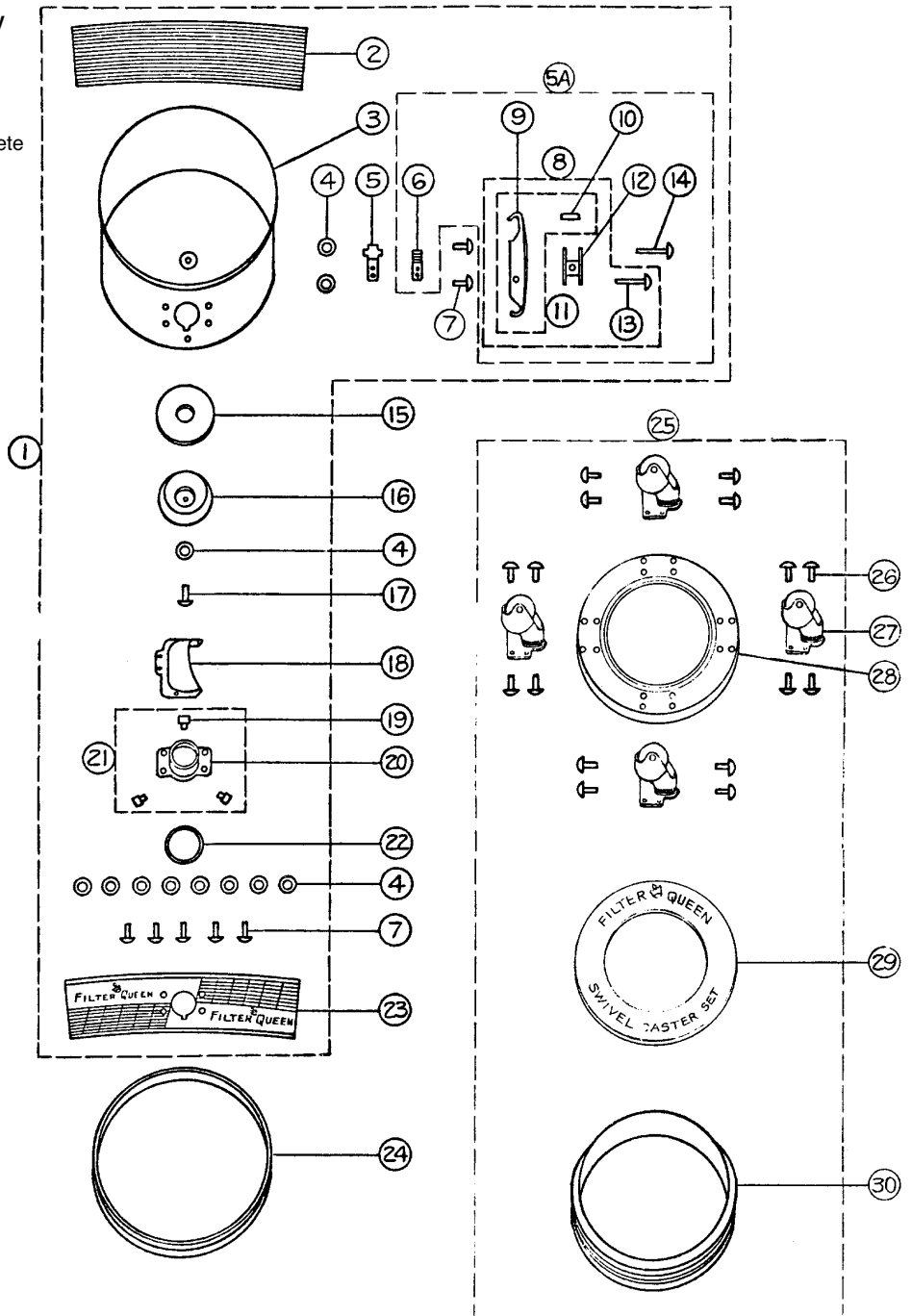


- 61 FQ-GRA7200 Attachment Holder Assy
- 62 FQ-GRA7201 Spring & Pin Assy
- 63 FQ-72003 Retainer Pin
- 64 FQ-A72002 Retainer Spring
- 65 FQ-72008 Screw
- 66 FQ-350060 Gasket, motor support
- 67 L-11622700 Motor, 2 stage, 2 speed (R)
- 68 FQ-16439 Rivet

Dirt Container Assembly

Model: D31X, K31X

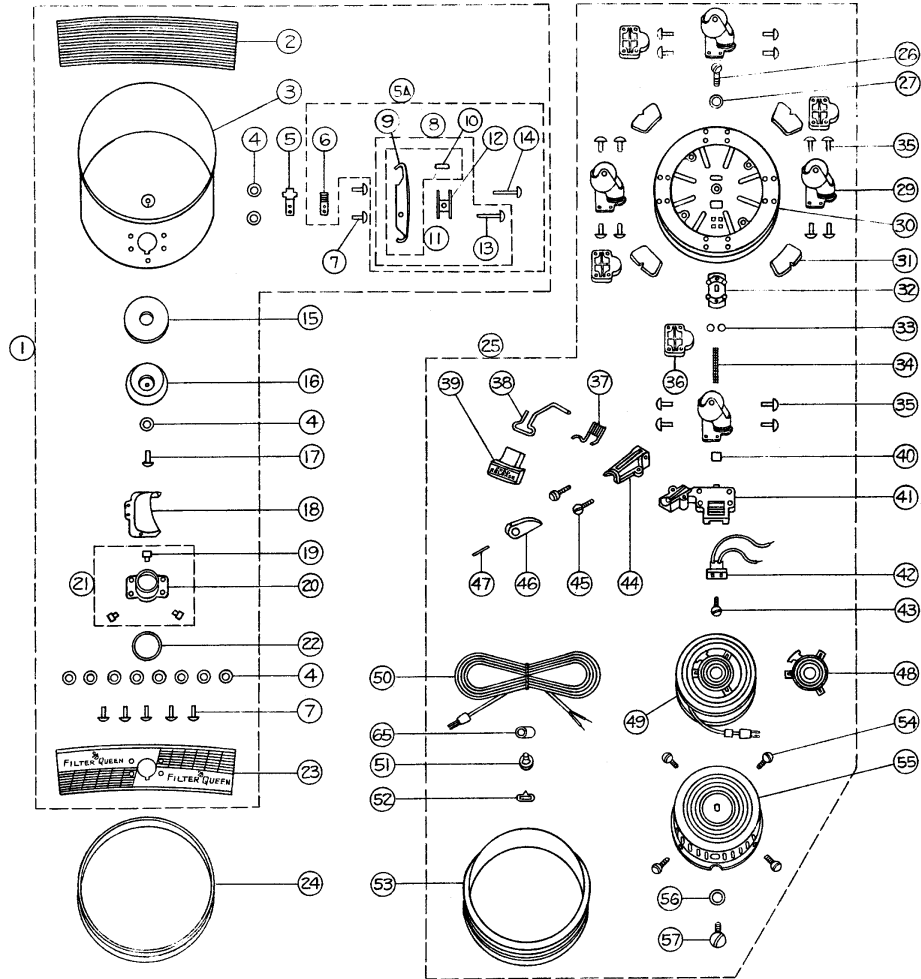
- 1 FQ-GRD3340 Dirt Container Assembly
- 2 FQ-D33420 Rear Panel
- 3 N/A Dirt Container
- 4 FQ-11246 Washer
- 5 FQ-500778 Clamp Spring Stamping
- 5A FQ-GRA3146 Clamp Assembly, complete
- 6 FQ-500779 Spring, clamp
- 7 FQ-16439 Rivet
- 8 FQ-GRXC3174 ... Clamp Assembly
- 9 N/A Clamp
- 10 FQ-XC31786 Protective Pad
- 11 FQ-GRXC3175 ... Clamp & Pad Assembly
- 12 FQ-224780 Clamp Link
- 13 FQ-224717 Rivet, clamp
- 14 FQ-A224784 Rivet, clamp link
- 15 FQ-500427 Gasket, cone locator
- 16 FQ-D33429 Cone Locator
- 17 FQ-133054 Rivet
- 18 FQ-200451 Dirt Deflector
- 19 FQ-10514 Inlet Pin
- 20 FQ-350406 Inlet
- 21 N/A Inlet & Pin Assembly
- 22 FQ-92407 Gasket, inlet
- 23 FQ-D33419 Decorative Panel, front
- 24 FQ-200430 Gasket, dirt container
- 25 FQ-GRD5700 Ball Caster Set
- 26 FQ-57784 Rivet
- 27 FQ-57782 Ball Caster
- 28 FQ-71780 Plate, caster
- 29 N/A Protective Shield
- 30 FQ-71783 Retainer Ring



We're the One Stop Shop for all your Vacuum and Janitorial Supplies! Call us today and see why we're the Number One Source for Filter Queen Repair Parts!

Dirt Container Assembly

Model: D33



- | | | | | |
|----|-------|-------------|-------|-------------------------------------|
| 1 | | FQ-GRD3340 | | Dirt Container Assembly |
| 2 | | FQ-D33420 | | Rear Panel |
| 3 | | FQ-D33418 | | Dirt Container |
| 4 | | FQ-11246 | | Washer |
| 5 | | FQ-500778 | | Clamp Spring Stamping |
| 5A | | FQ-GRA3146 | | Clamp Assembly, complete, w/ spring |
| 6 | | FQ-500779 | | Clamp Spring Stamping |
| 7 | | FQ-16439 | | Rivet |
| 8 | | FQ-GRXC3174 | ... | Clamp Assembly |
| 9 | | N/A | | Clamp |
| 10 | | FQ-XC31786 | | Protective Pad |
| 11 | | FQ-GRXC3175 | ... | Clamp & Pad Assembly |
| 12 | | FQ-224780 | | Clamp Link |
| 13 | | FQ-224717 | | Rivet, clamp |
| 14 | | FQ-A224784 | | Rivet, clamp link |
| 15 | | FQ-500427 | | Gasket, cone locator |
| 16 | | FQ-D33429 | | Cone Locator |
| 17 | | FQ-133054 | | Rivet |
| 18 | | FQ-200451 | | Dirt Deflector |
| 19 | | FQ-10514 | | Inlet Pin |
| 20 | | FQ-3504506 | | Inlet |
| 21 | | FQ-GR35043 | | Inlet & Pin Assembly |
| 22 | | FQ-92407 | | Gasket, inlet |
| 23 | | FQ-D33419 | | Decorative Panel, front |
| 24 | | FQ-200430 | | Gasket, dirt container, grey |
| 25 | | FQ-GRD5800 | | Ball Caster & Reel Assembly |
| 26 | | FQ-42347 | | Screw, shaft |
| 27 | | FQ-42348 | | Lockwasher |
| 29 | | FQ-57782 | | Ball Caster, w/ metal holder |
| 30 | | FQ-42780 | | Plate, caster |
| 31 | | FQ-42786 | | Protective Pad |
| 32 | | FQ-GR4209 | | Brush Block Assembly |
| 33 | | FQ-42346 | | Terminal Insulator |
| 34 | | N/A | | Wire Insulating Tube |
| 35 | | FQ-42784 | | Rivet |
| 36 | | FQ-D58007 | | Spacer, ball caster |
| 37 | | FQ-42009 | | Tension Spring, lever |
| 38 | | FQ-42750 | | Lever |
| 39 | | FQ-D42749 | | Cover |
| 40 | | N/A | | Outlet Insulator |
| 41 | | FQ-42007 | | Spacer, caster |
| 42 | | FQ-A42321 | | Outlet |
| 43 | | FQ-42319 | | Screw, outlet |
| 44 | | FQ-42008 | | Cam Holder |
| 45 | | FQ-42063 | | Screw, cam holder |
| 46 | | FQ-42753 | | Cam |
| 47 | | FQ-42022 | | Retainer Pin, cam |
| 48 | | FQ-GR4211 | | Collector Ring Block Assembly |
| 49 | | FQ-GRD4203A | ... | Reel Mechanism Assembly, w/ #48 |
| 50 | | N/A | | Cord |
| 51 | | FQ-42324 | | Bushing |
| 52 | | N/A | | Indicating Plate, front |
| 53 | | FQ-71783 | | Retainer Ring |
| 54 | | FQ-42012 | | Cover Screw |
| 55 | | N/A | | Cover |
| 56 | | FQ-42117 | | Lockwasher |
| 57 | | FQ-42045 | | Shaft & Cover Screw |