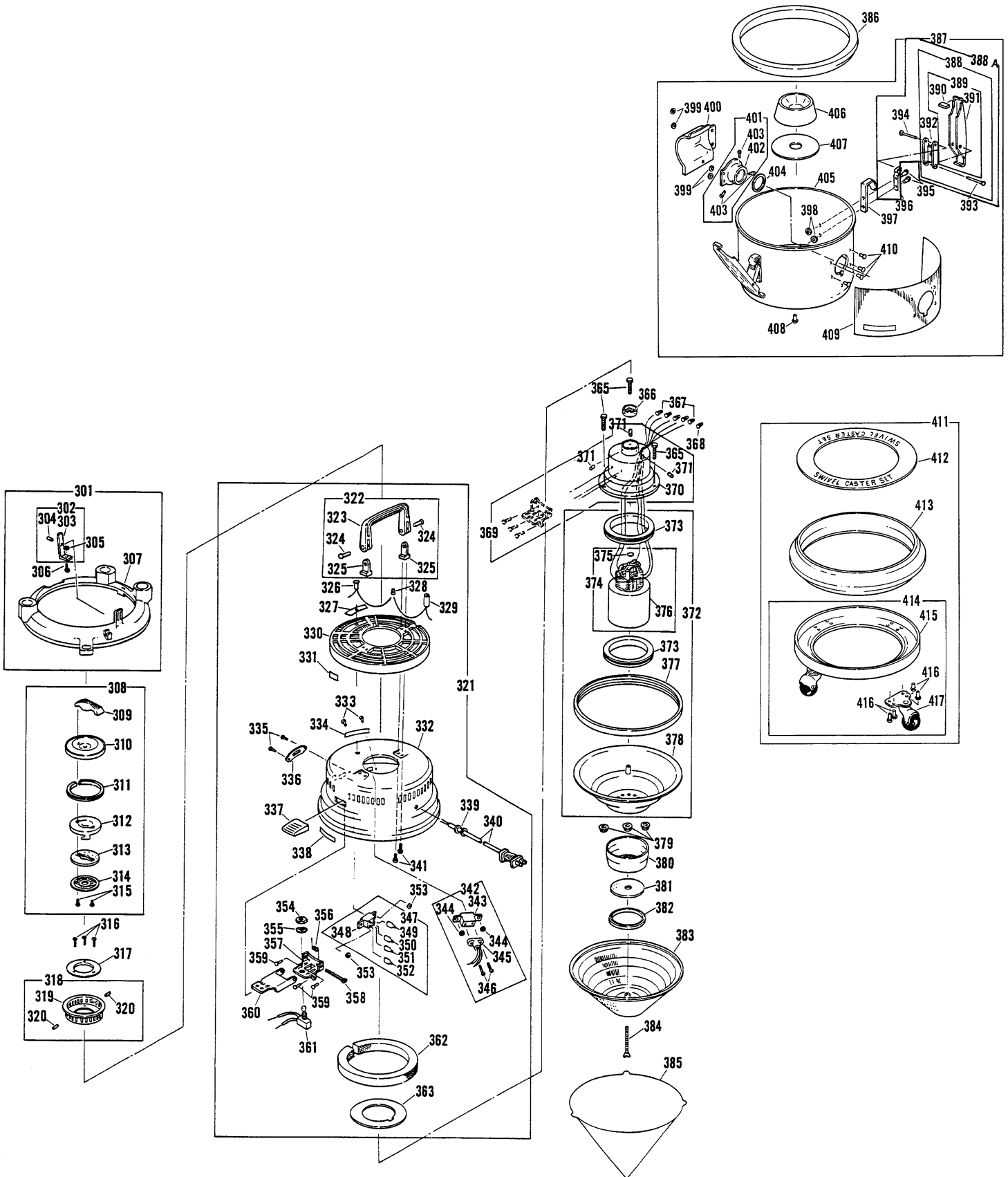


# FILTER QUEEN

Model: Majestic 95X



# FILTER QUEEN

Model: Majestic 95X

301	FQ-GR9561	Attachment Holder Assy	369	FQ-GR3172	Upper Motor Support & Pins Assy
302	FQ-GRA7201	Spring & Pin Assy	370	FQ-31731	Upper Motor Support, black
303	use #302	Retainer Spring	371	use #369	Connector Pin
304	use #302	Retainer Pin	372	FQ-31769	Lower Motor Support Assembly
305	FQ-72348	Lockwasher	373	FQ-350060	Motor Support, rubber
306	FQ-72008	Screw	374	L-11622700	Motor Unit, 2 speed (R)
307		Attachment Holder	375	N/A	Fiber Motor Insulating Disc
308	FQ-GRJ9573	Dome Cover & Handle Assy	376	use #374	Motor, 2 speed
309	FQ-95314	Handle, dome cover	377	FQ-31775	Gasket, dome
310	FQ-D500651	Dome Cover, plated	378	FQ-31769	Lower Motor Support, black
311	FQ-31776	Gasket, dome cover	379	FQ-31146-A	Kepsnut, brite zinc
312	FQ-J95650	Inner Dome Cover Stamping	380	FQ-95798	Retainer, secondary filter support, black
313	FQ-500790	De-Odorizer Felt	381	FQ-95450	Secondary Filter, paper
314	FQ-A500793	Retainer Spring, de-odorizer	382	FQ-31798	Support, secondary filter, black
315	FQ-31795P	Screw	383	N/A	Cone, perforated
316	FQ-33063P	Screw	384	FQ-350712P	Screw
317	N/A	Patent Plate	385	FQ-GRA50047	Filter Cone, patented cellulose, 12pk
318	FQ-GRK35071	Connector Stamping & Pins Assy	386	FQ-95430	Gasket, dirt container
319	use #318	Connector Stamping, dome	387	N/A	Dirt Container Assembly
320	use #318	Locking Pin	388	FQ-GR9574A	Clamp Assembly, complete
321	FQ-GR9560A	Complete Dome Assy	389	FQ-GR9575A	Clamp Assembly
322	FQ-GR9566	Handle & Brackett Assy	390	FQ-95786	Protective Pad, clamp
323	use #322	Carrying Handle, bronze	391	FQ-95781	Clamp, dirt container, plated
324	use #322	Rivet	392	FQ-224780	Clamp Link
325	use #322	Handle Bracket	393	FQ-224717B	Rivet
326	FQ-95835	Indicator Light	394	FQ-A224784	Rivet
327	FQ-95706	Light Decal	395	FQ-16439	Rivet
328	FQ-48760	Wire Connector, small, yellow	396	FQ-500779	Spring, clamp
329	FQ-95835A	Thermostat	397	FQ-500778	Stamping, clamp spring
330	FQ-95645	Decorative Grill	398	FQ-11246	Washer
331	FQ-K33303	Label, on-off	399	FQ-11246	Washer
332	FQ-95653A	Plated Dome, U.S., chrome	400	FQ-200451	Deflector Stamping
333	FQ-133054	Rivet	401	FQ-GR35043	Container Inlet & Pin Assembly
334	FQ-95766	Outlet Label	402	FQ-350406	Inlet Stamping
335	FQ-8241	Rivet	403	FQ-10514	Locking Pin
336	FQ-95303	Indicating PLate	404	FQ-92407	Gasket, inlet
337	FQ-95749	Switch Lever Pad, black	405	use #387	Dirt Container, bronze
338	FQ-PG92767	Warning Decal, cellulose fiber	406	use #387	Cone Locator, metallic bronze
339	FQ-31306	Strain Relief, black	407	use #387	Sealing Gasket, cone locator
340	FQ-95301	Attachment Cord, black	408	use #387	Rivet
341	FQ-33719P	Screw	409	FQ-95419A	Dirt Container Panel
342	FQ-GR9532	Outlet & Holder Assy	410	use #387	Rivet
343	FQ-95350	Outlet Holder	411	FQ-GR9562A	Plate & Caster Assembly, complete
344	FQ-11246	Washer	412	FQ-95905	Protective Shield, black
345	FQ-33321	Outlet	413	FQ-95783	Caster Ring
346	FQ-31320P	Screw	414	FQ-GR9563A	Plate & Caster Assy
347	FQ-GRB3331	Switch Assy, 2 speed	415	use #413	Caster Plate, painted, black
348	FQ-B33302	Switch, 2 speed	416	use #413	Rivet
349	FQ-W33029	Lead Wire, white	417	FQ-079	Caster
350	FQ-Y33029	Lead Wire, yellow			
351		Lead Wire, blue			
352	FQ-R33029	Lead Wire, red			
353	FQ-11246	Washer			
354	no #	Hex Nut, switch			
355	FQ-153318	Lockwasher, switch			
356	FQ-500752	Spring, switch lever			
357	use #369	Bracket, switch			
358	FQ-350751	Hinge Pin, switch lever			
359	use #369	Rivet			
360	FQ-500750	Switch Lever, nickel-plated			
361	FQ-31302	Switch			
362	FQ-350787A	Silencing Filter			
363	FQ-31791	Filter Support			
365	FQ-350012P	Screw			
366	FQ-31797A	Protective Screen			
367	FQ-A239760	Wire Connector, black			
368	FQ-95760	Wire Connector, black, large			

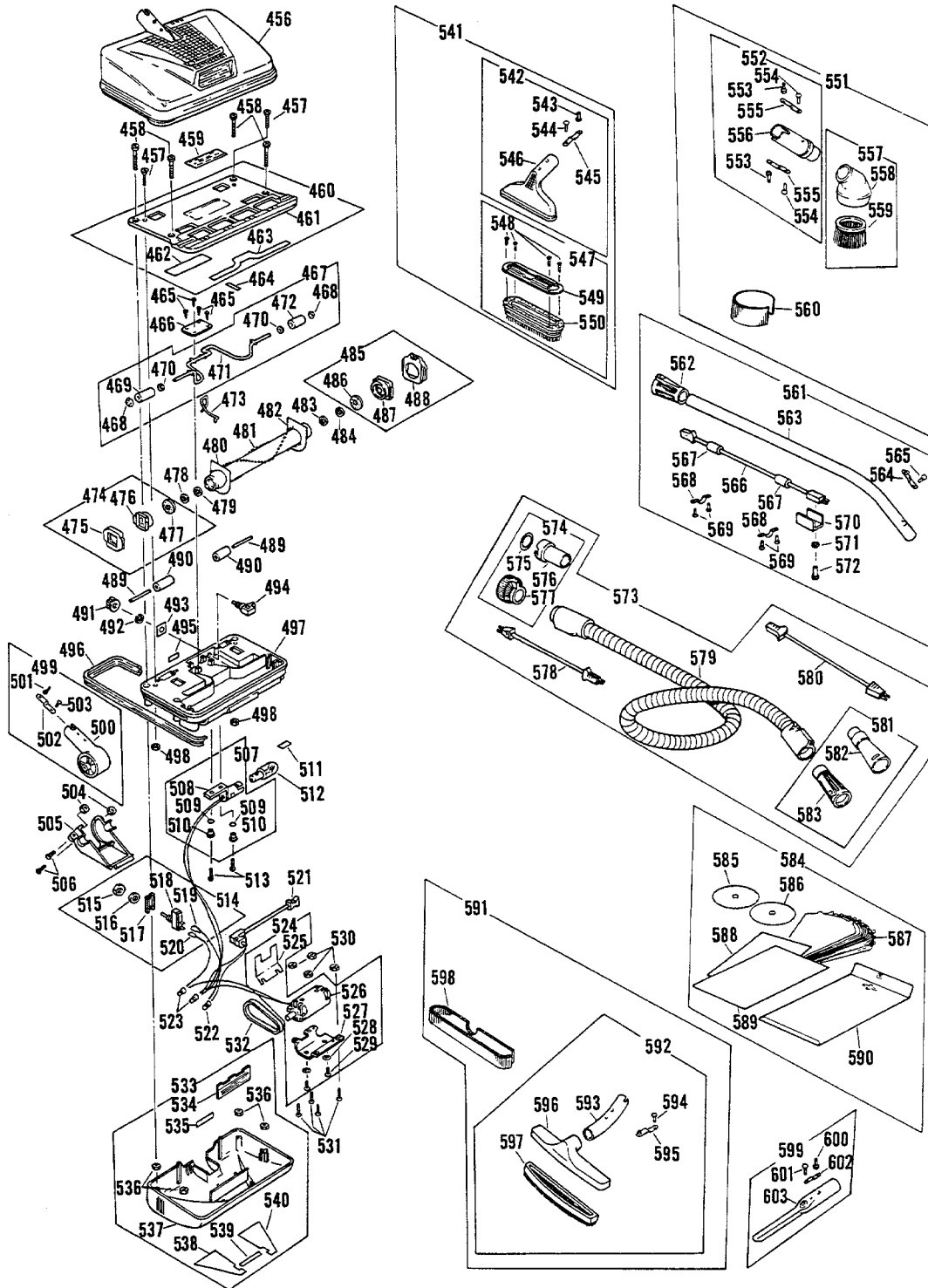
# HESCO

## The One Stop Shop

# FILTER QUEEN

Fits Majestic 95X

Model: AN Power Nozzle



- 456 ..... Nozzle Assembly
- 457 ..... FQ-A88215P ..... Screw
- 458 ..... FQ-88208P ..... Screw
- 459 ..... N/A ..... Serial Number Plate
- 460 ..... FQ-GRA8824 ..... Bottom Plate Assembly
- 461 ..... use #460 ..... Bottom Plate
- 462 ..... use #460 ..... Instruction Sheet
- 463 ..... FQ-88280A ..... Sealing Gasket, bottom plate

- 464 ..... FQ-88279A ..... Sealing Gasket Strip
- 465 ..... FQ-56237P ..... Screw
- 466 ..... FQ-48282 ..... Retainer Plate, roller plate
- 467 ..... FQ-GR8822 ..... Roller Arm Assembly
- 468 ..... FQ-48276 ..... Pushnut Fastener
- 469 ..... FQ-52283R ..... Roller, left
- 470 ..... FQ-48243 ..... Washer, nylon
- 471 ..... FQ-88281 ..... Roller Arm

## Fits Majestic 95X

## Model: AN Power Nozzle

472	FQ-52283R	Roller, right	538	FQ-96419L	Decal, power nozzle cover, left
473	FQ-88284	Spring, roller arm	539	FQ-96706	Nameplate
474	FQ-GR5223	Bearing Assembly, brush roll	540	FQ-96419R	Decal, power nozzle cover, right
475	FQ-52274	Brush Mount, rubber	541	FQ-GR9627A	Nozzle & Brush Assy, 6"
476	use #474	Bearing Cover, plated	542	FQ-GRD50068	Nozzle & Pin Assy, 6"
477	FQ-48267	Washer, bearing dirt seal, large felt	543	FQ-156232	Retainer Pin
478	FQ-48216	Washer, brush shaft, felt	544	use #542	Rivet
479	FQ-48246	Washer, steel	545	use #542	Retainer Spring
480	FQ-88228	Dirt Seal, belt	546	use #542	Finished Nozzle, 6"
481	FQ-GR8821	Brush Roll Assembly	547	FQ-GR9629	Brush Assembly
482	FQ-88228	Dirt Seal, belt	548	FQ-33237P	Screw
483	FQ-48246	Washer, steel	549	FQ-66858	Clamp Plate
484	FQ-48216	Washer, brush shaft, felt	550	FQ-96291A	Brush, 6", metallic bronze
485	FQ-GR5223	Bearing Assembly, brushroll	551	FQ-GR9682	Round Brush Assy, complete
486	FQ-48267	Washer, dirt seal, bearing, large, felt	552	use #551	Adaptor Assy
487	use #485	Bearing Cover, plated	553	FQ-156232	Retainer Pin
488	FQ-52274	Brush Mount, rubber	554	use #551	Rivet
489	FQ-88249	Roller Shaft	555	use #551	Retainer Spring
490	FQ-88248	Wheel	556	use #551	Adaptor, metallic bronze
491	FQ-96221	Knob, black	557	use #551	Round Brush Assy
492	FQ-52222	Retainer Ring, industrial	558	use #551	Body, round brush
493	FQ-96244	Indicating Plate, cam	559	FQ-33806	Bristled Insert
494	FQ-52225	Cam	560	use #551	Sleeve, for round brush
495	FQ-96303	Label, circuit breaker	561	FQ-GR9630	Handle Tube Assy
496	FQ-BM88201	Bumper, black	562	FQ-96842	Tube Seal, short
497	FQ-96209	Base	563	USE #561	Handle Tube
498	FQ-88213	On-Sert, inverted	564	FQ-95231	Spring & Pin
499	FQ-GR9687A	Swivel Adaptor Assy, bronze	565	use #561	Rivet
500	use #499	Adaptor	566	FQ-GR9636	Cord, handle tube
501	FQ-156232	Retainer Pin	567	use #566	Sleeve, fiberglass
502	use #499	Retainer Spring	568	FQ-48305	Cord Clip, nickel-plated
503	use #499	Rivet	569	FQ-48329	Pop Rivet
504	FQ-48207	On-Sert Fastener	570	FQ-48304	Clamp, cord connector
505	FQ-96211	Retainer, adaptor	571	FQ-J48276	Washer, steel, flat
506	FQ-31719P	Screw	572	FQ-J48717	Pop Rivet
507	FQ-GR8835	Lamp Socket Assembly	573	FQ-GR9684	Hose Assembly
508	FQ-88233A	Lamp Socket	574	FQ-GR9680	Hose Connector Assy, complete
509	FQ-88345	Eyelet	575	FQ-3407	Gasket
510	FQ-88324	Grommet	576	use #574	Hose Connector Assy
511	FQ-88238	Warning Label, lamp	577	use #574	Connector Cover
512	FQ-88235	Lamp	578	FQ-96821	Pigtail, male
513	FQ-31215P	Screw	579	FQ-GR9684	Hose, current-carrying
514	FQ-GR8831	Circuit Breaker & Leads Assy	580	FQ-96822	Pigtail, female, black
515	FQ-44081	Hex Nut	581	FQ-GR9685	Adaptor Tube Assy
516	FQ-88025	Washer, steel, nickel-plated	582	use #581	Adaptor Tube, hose
517	FQ-A88302	Circuit Breaker Plate	583	use #581	Tube Seal, long
518	FQ-88302	Circuit Breaker	584	FQ-GR954712	Envelope, / 12 filters
519	FQ-R88029	Lead Wire, red	585	FQ-350450	Secondary Filter, paper, larger
520	FQ-88029	Lead Wire, black	586	FQ-95450	Secondary Filter, paper, smaller
521	FQ-96323	Cord, power nozzle	587	use #584	Filter Cone, patented cellulose
522	FQ-48760	Wire Connector, small, yellow	588	use #584	Info Sheet, secondary filter
523	FQ-A48760	Wire Connector, black	589	use #584	Warning Sheet
524	FQ-GR8809	Motor Assembly	590	use #584	Filter Cone Envelope
525	FQ-88308	Insulator	591	FQ-GREM9681A	Brush Assembly, 10", complete
526	FQ-GR9608	Motor	592	use #591	Brush Assembly, 10", w/metal
527		Bracket, motor	593	use #591	Brush Elbow, 10", stainless
528	FQ-42348	Lockwasher	594	use #591	Rivet
529	FQ-48218P	Screw	595	use #591	Spring & Pin
530	FQ-48207	On-Sert Fastener	596	use #591	Brush Body, 10"
531	FQ-31719P	Screw	597	FQ-230806	Brush Insert
532	FQ-48260	Belt, sold each	598	use #591	Brush Protector
532	FQ-206	Belt, sold each (R)	599	FQ-GR9679	Crevice Tool & Pin Assembly
533	FQ-GR9625A	Nozzle Cover Assembly	600	FQ-156232	Retainer Pin
534	FQ-88230	Lens	601	use #599	Rivet
535	FQ-PG92765	Warning Label, electric shock...	602	use #599	Retainer Spring
536	FQ-48207	On-Sert Fastener	603	use #599	Crevice Tool
537	FQ-GR9625A	Cover, power nozzle, chrome-plated			