

EUREKA UPRIGHTS

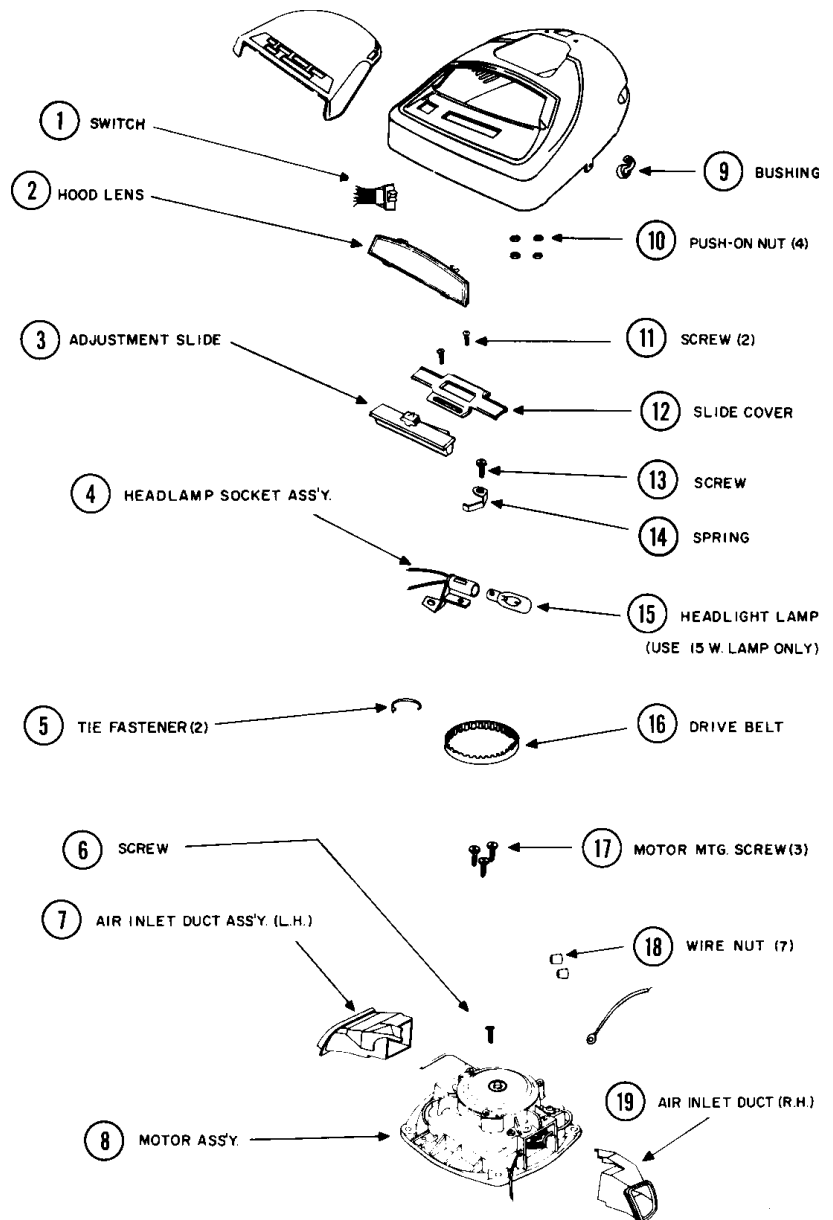
5000 Series

UPPER CASTING ASSEMBLY

Self-Propelled

Models: 5040A, 5040B, 5047A, 5060A, 5060B, 5060BX, 5060E, 5070A, 5071A, 5071B, 5077A, 5077B, 5085A

- 1.....N/ASwitch, 2 speed rocker, (hood mount)
- 1.....E-3640913.....Switch, 1 speed step-on, (hood mount)
- 2.....E-134431.....Hood Lens
- 2.....E-134339.....Hood Lens, 5040A,5040B,5047A
- 2.....N/AHood Lens, 5085A
- 3.....E-24866A5Adjustment Slide
- 4.....E-36722.....Lamp Socket Assy
- 4.....E-36948.....Lamp Socket Assy, wide track, 5085A
- 5.....E-467131.....Tie Fastener, 2 used
- 6.....E-5323813.....Motor Mount Screw, 1 used, 10 pk
- 7.....N/AAir Inlet Duct Assy, left side
- 7.....N/AAir Inlet Duct Assy, left side, wide track, 5085A
- 8.....E-543531.....Motor Assy, 1 speed, 6.5 amp
- 8.....E-533901.....Motor Assy, 1 speed, 3.5 amp, 5040A, 5040B,5047A,5047B
- 8.....E-543532.....Motor Assy, 2 speed, 3.5 amp, (models with switch in hood)
- 8.....E-543533.....Motor Assy, 2 speed, 6.5 amp, (models with switch in handle)
- 10.....E-53186.....Nut, push on, 4 used, 10 pk
- 11.....E-53147.....Screw, 10 pk
- 12.....E-25729A6Slide Cover, lexan
- 13.....E-48867.....Spring Screw
- 14.....N/ASpring
- 15.....E-48815.....Bulb, 15 watt
- 16.....E-49727.....Drive Belt
- 17.....E-5323814.....Motor Mount Screw, 3 used, 10 pk
- 18.....E-601921.....Wire Nut, 5 pk
- 19.....E-56385.....Air Inlet Duct Assy, right side
- 19.....E-552802.....Air Inlet Duct Assy, right side, wide track, 5085A
- E-36970.....Cap Nameplate, ginger
- N/AHood Nameplate, cinnamon, wide track



EUREKA UPRIGHTS

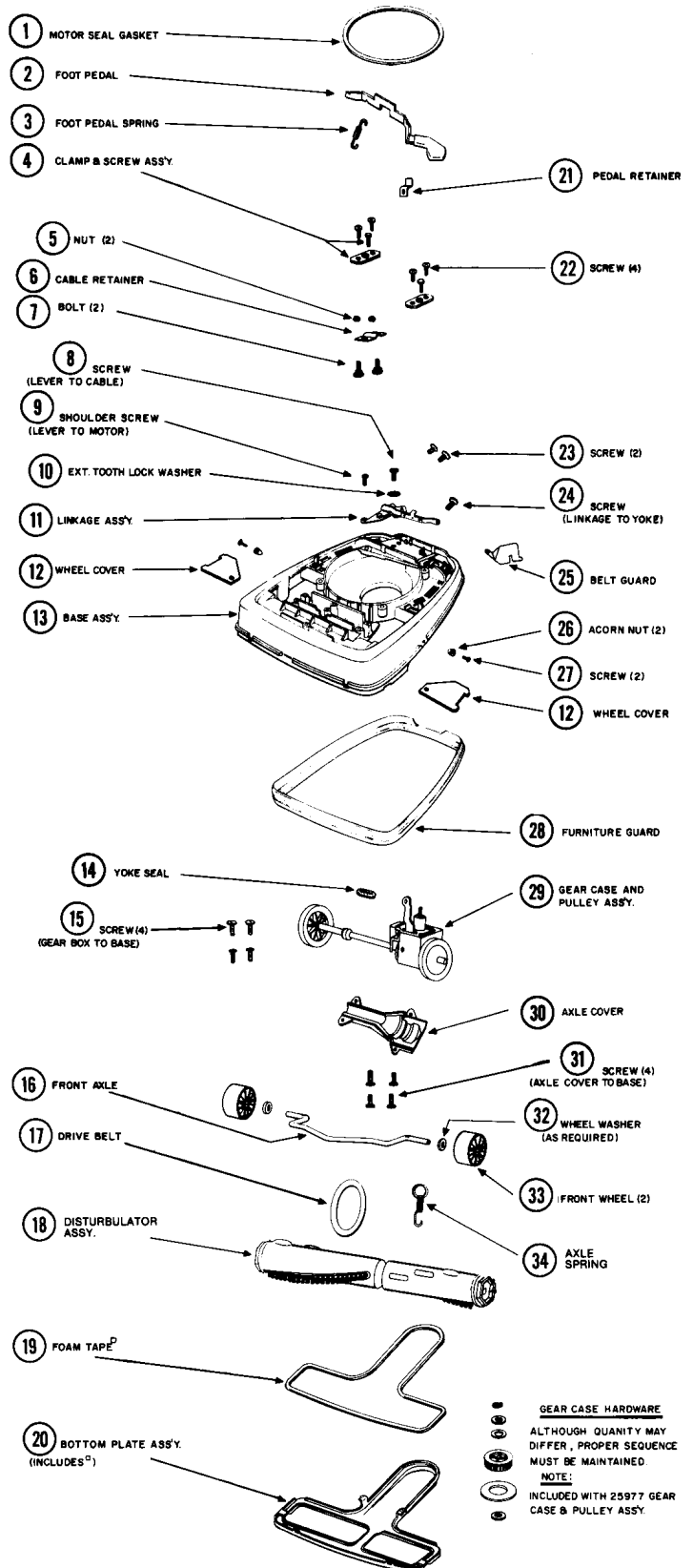
5000 Series

LOWER CASTING ASSEMBLY (one-piece power drive unit)

Self-Propelled

Models: 5040A, 5040B, 5047A, 5060A, 5060B, 5060BX, 5070A, 5070B, 5071A, 5077A, 5077B

- 1.....E-30517.....Motor Seal Gasket
- 2.....E-36707A.....Foot Pedal
- 3.....E-53097.....Spring, foot pedal, 5 pk
- 4.....E-53140.....Clamp & Screw Assembly, 6 pk
- 5.....E-532135.....Nut, cable retainer, 10 pk
- 6.....E-36705.....Cable Retainer
- 7.....E-53145.....Bolt, cable retainer, 10 pk
- 8.....E-5322810.....Screw, lever to cable, 10 pk
- 9.....E-53173.....Shoulder Screw, lever to motor, 10 pk
- 10.....E-532231.....Lock Washer, external tooth, 10 pk
- 11.....E-25852A.....Linkage Assembly
- 12.....E-36263.....Wheel Cover
- 13.....N/A.....Base Assembly, w/ gear & pulley
- 15.....E-532288.....Screw, gear box to base, 10 pk
- 16.....E-35947A.....Front Axle
- 17.....E-52100.....Belt, pkg of 2
- 17.....E-30563A.....Belt, sold each
- 18.....E-53347.....Brush Roll, VG II, square end, 12"
- 18.....E-533981.....Brush Roll, VG II, hex end, sleeve bearings, 12"
- 18.....E-53270.....Brush Roll, VG II, hex end, ball bearings, 12"
- 19.....E-465384.....Foam Tape, bottom plate
- 20.....E-259221.....Bottom Plate Assy, w/ slots, new style
- 21.....E-36842.....Pedal Retainer
- 22.....E-5323814.....Screw, 2 used, 10 pk
- 23.....E-532287.....Screw, bag ring, 2 used, 10 pk
- 24.....E-53176.....Screw, linkage to yoke, 10 pk
- 25.....E-36794.....Belt Guard
- 26.....E-53150.....Acorn Nut, 2 used, 10 pk
- 27.....N/A.....Screw, 2 used
- 28.....E-363423.....Furniture Guard, frost white
- 29.....N/A.....Gear Case & Pulley Assy, complete, (parts not available)
- 30.....N/A.....Axle Cover
- 31.....E-5323811.....Screw, 4 used, 10 pk
- 32.....E-53110.....Washer
- 33.....E-35859A1.....Wheel, front
- 34.....E-530762.....Axle Spring, 5060A,5070A,5071A,5077B, 6 pk



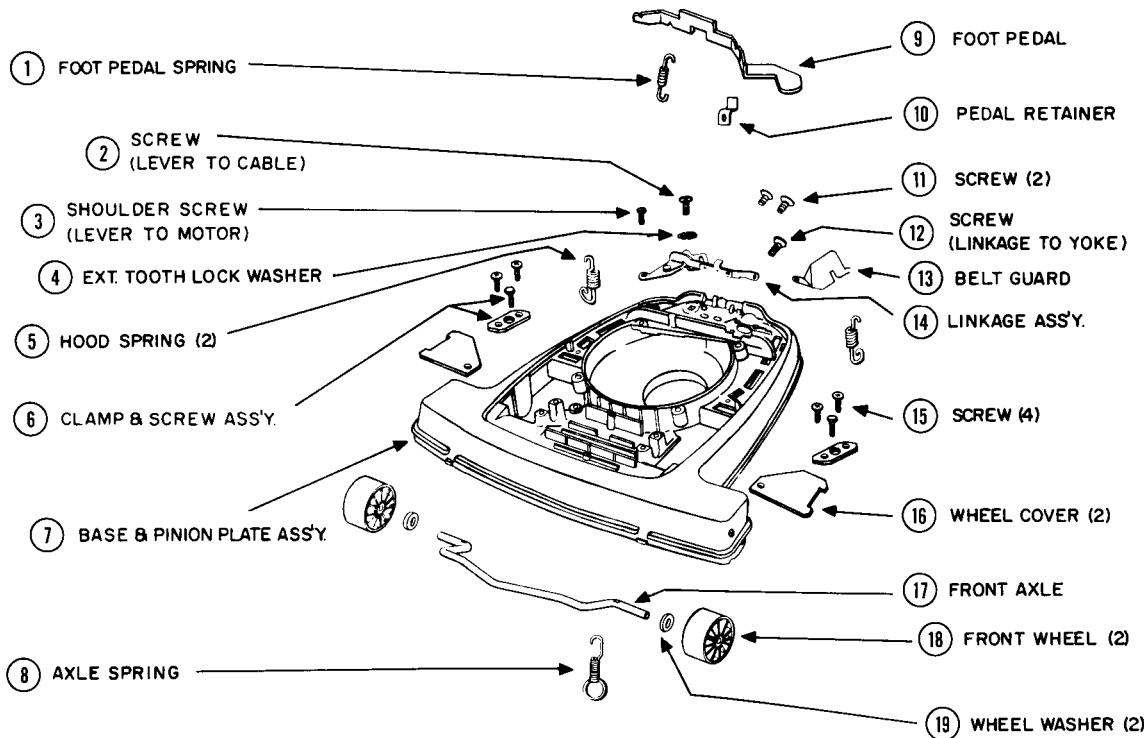
EUREKA UPRIGHTS

5000 Series

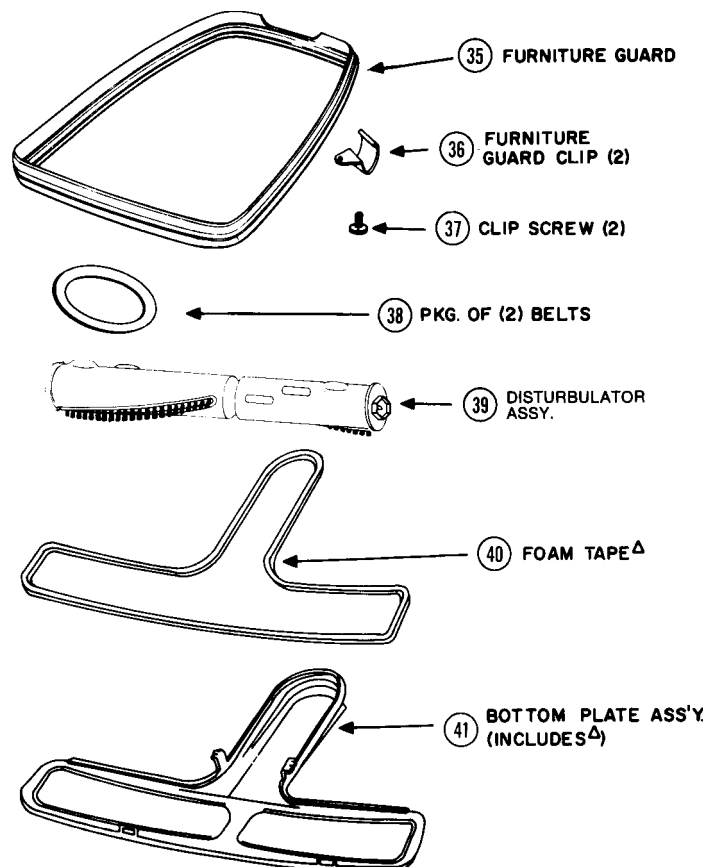
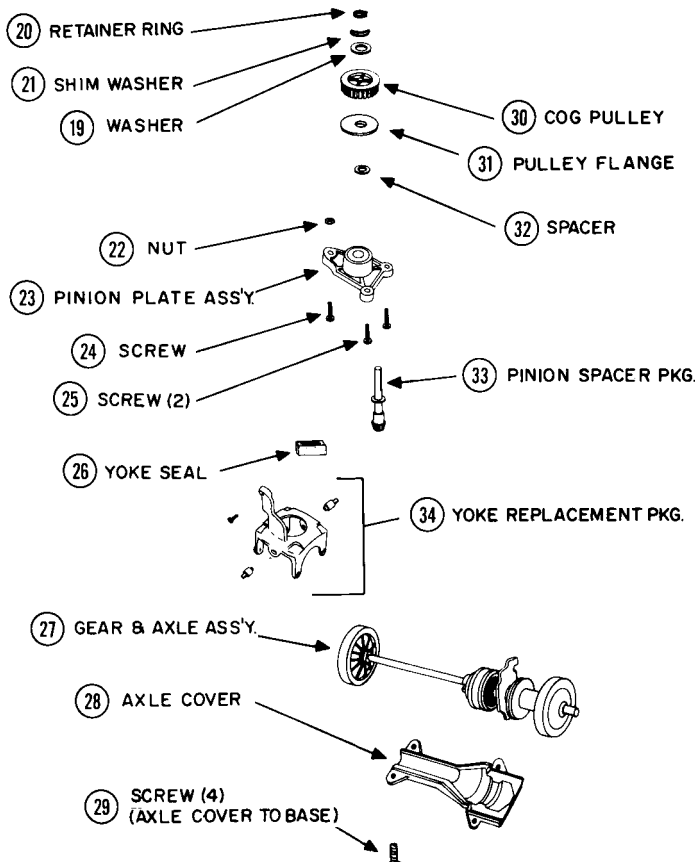
LOWER CASTING ASSEMBLY (component power drive unit)

Self-Propelled

Models: 5047B, 5060E, 5071B, 5071D, 5085A



NOT AVAILABLE AS A COMPLETE UNIT



EUREKA UPRIGHTS

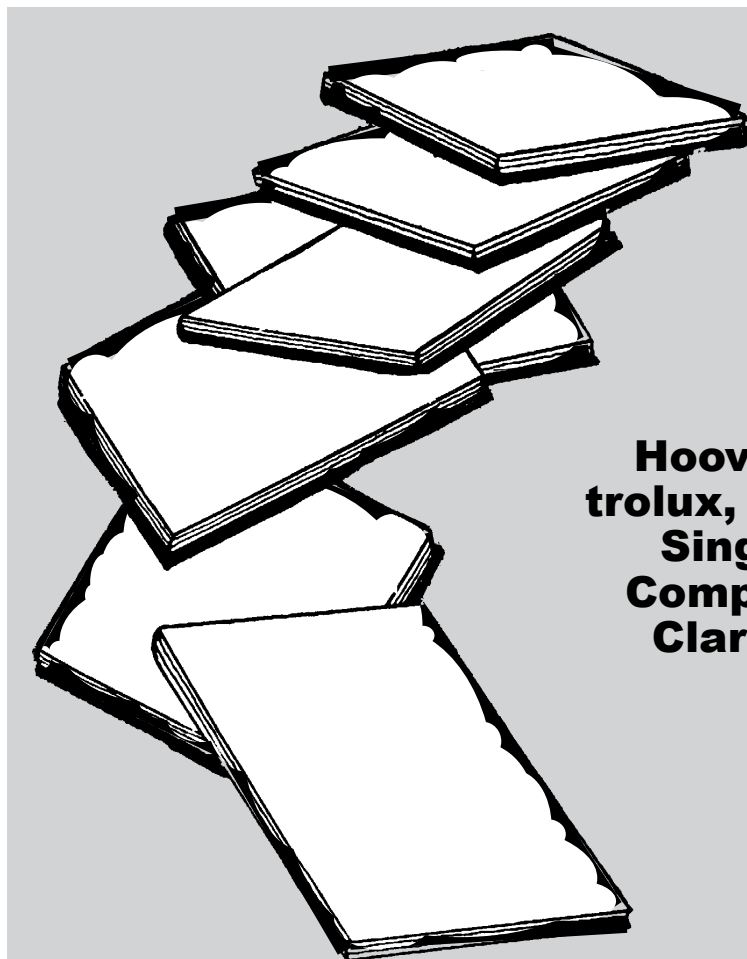
5000 Series

LOWER CASTING ASSEMBLY (component power drive unit)

Self-Propelled

Models: 5047B, 5060E, 5071B, 5071D, 5085A

1.....E-53097.....Foot Pedal Spring	25.....N/A.....Screw, 2 used
2.....E-5322810.....Screw, lever to cable	26.....E-36947.....Yoke Seal
3.....E-53173.....Shoulder Screw, lever to motor	27.....E-53463.....Gear & Axle Assembly
4.....E-532231.....Lock Washer, external tooth	28.....E-135071.....Axle Cover
5.....E-53117.....Hood Spring	29.....E-5323811.....Screw, axle cover to base, 4 used
6.....E-53140.....Clamp & Screw Assembly	30.....E-36703.....Cog Pulley
7.....N/A.....Base Assembly	31.....N/A.....Pulley Flange
7.....N/A.....Base Assembly, wide track, 5085A	32.....E-531701.....Spacer
8.....E-530762.....Axle Spring, 6 pk	33.....E-55276A.....Pinion & Spacer Package, metal
9.....E-36707A.....Foot Pedal	34.....E-55277.....Yoke Replacement Package
10.....E-36707A.....Retainer, foot pedal	35.....E-363423.....Furniture Guard, 40"
11.....E-5323818.....Screw, bag ring, 2 used, 10 pk	36.....E-25666.....Furniture Guard, 47", wide track, 5085A
12.....E-53176.....Screw, linkage to yoke, 10 pk	37.....E-546691.....Clip, furniture guard
13.....E-36794.....Belt Guard	38.....E-52100.....Belt, pkg of 2
14.....E-25852A.....Linkage Assembly, all except 5071D	38.....E-30563A.....Belt, sold each
14.....E-26154.....Linkage Assembly, 5071D	39.....E-533981.....Brush Roll, VG II, hex end
15.....E-5323818.....Screw, 10 pk	39.....E-53271.....Brush Roll, VG II, hex end, 16", wide track, 5085A
16.....E-36263.....Wheel Cover	40.....E-465384.....Foam Tape, bottom plate
17.....E-35947A.....Front Axle	41.....E-259221.....Bottom Plate Assy, all models except 5085A
18.....E-35859A1.....Front Wheel	41.....E-25672A.....Bottom Plate Assembly, wide track, 5085A
19.....E-53110.....Washer	
20.....E-543201.....Retainer Ring	
22.....E-532135.....Nut	
23.....E-54288.....Pinion Plate Assembly	
24.....N/A.....Screw	



HESCO VACUUM REPAIR CATALOGS

Hoover, Eureka, Panasonic, Electrolux, Kirby, Bissell, Rexair, Royal, Singer, Oreck, Sharp, Shop Vac, Compact, Ametek / Lamb Motors, Clarke, Advance, Douglas, Filter Queen and many more!

The Best in the Business!

PHONE: 1-800-822-7467

FAX: 847-647-0534

E-MAIL: sales@hescoinc.com

WEB: hescoinc.com

EUREKA UPRIGHTS

5000 Series

HANDLE ASSEMBLY

Self-Propelled

Models: 5040A, 5040B, 5047A, 5047B, 5060A, 5060B, 5060BX, 5060E, 5070A, 5070B, 5071A, 5071B, 5071D, 5077A, 5077B, 5085A

- 1..... E-13336B9Handle Grip Only, upper
- 1A..... N/AHandle Grip Assy, upper, w/ button lock and spring, 5040A,5060A,5070A,5077A
- 1B..... E-368131.....Button Lock
- 1C..... E-36704BSpring Lock
- 2..... E-133379.....Handle Grip, lower
- 3..... E-532384.....Screw
- 4..... N/AHandle Tube, upper
- 4..... N/AHandle Tube, upper, 5060A,5070A,5077A
- 4..... E-134813.....Handle Tube, upper, 5040B,5047A,5047B
- 4..... N/AHandle Tube, upper, 5040A
- 5..... E-369642.....Cord Retainer, upper
- 5..... E-537472.....Cord Retainer Kit, upper & lower, 5040A,5040B,5047A,5047B
- 6..... E-601921.....Wire Nut
- 7..... E-127942.....Handle Tube, lower
- 7..... E-126378.....Handle Tube, lower, 5040A,5040B,5047A,5047B
- 8..... N/ACord Retainer, lower
- 8..... E-135212.....Cord Retainer, lower, 5071B,5071D, 5085A
- 9..... E-3605010.....Handle Cord, 2 wire, 5060A,5060B,5060BX, 5070A,5070B,5077A,5077B,5085A
- 9..... N/AHandle Cord, 3 wire, 5071A,5071B
- 11..... E-52360.....Cable Repair Kit, cable, linkage arm assy, clamp and screw included
- 11..... E-37078.....Cable Assembly, 5047B,5071D
- 12..... E-134135.....Cover, handle socket assembly
- 13..... NLASpring Spacer
- 14..... E-368901.....Neutral Lock
- 15..... E-53175.....Centering Spring
- 16..... E-360521.....Switch, 1 speed, snap-in
- 16..... E-360564.....Switch, 2 speed, snap-in
- 17..... E-49712.....Handle Insulator
- 18..... E-531981.....Screw & Nut Assembly
- 19..... E-252426.....Cord, 30 ft, w/ molded fitting, all models with hood switch
- 20..... E-544151.....Cord, w/ molded fitting, all models with handle switch
- 21..... E-36705.....Cable Retainer
- 22..... E-534871.....Handle Socket Assembly, white

