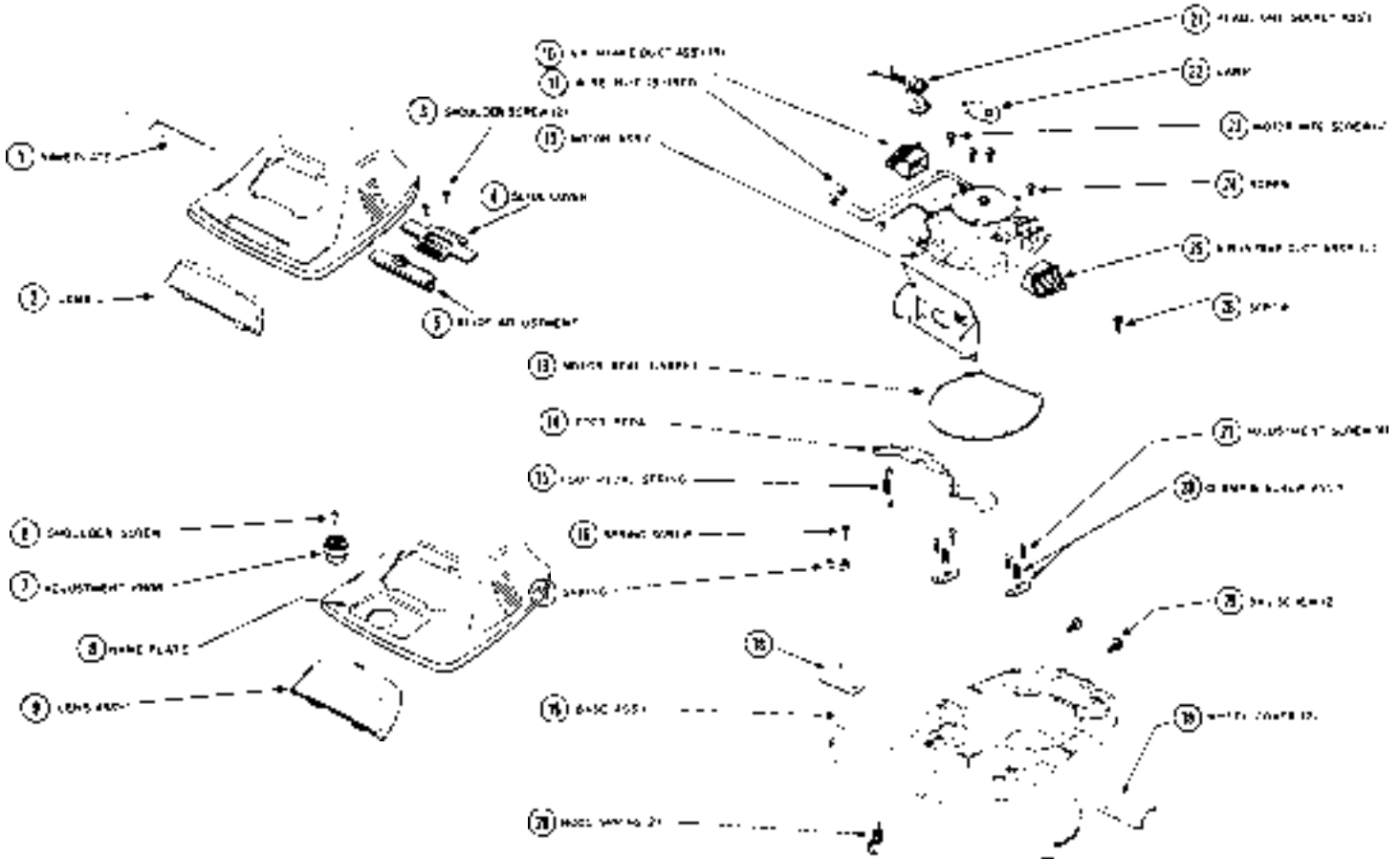


EUREKA UPRIGHTS

4000 Series

• UPPER CASTING ASSEMBLY (WIDE TRACK)

Models: 4036A, 4036B, 4040A, 4040B, 4050A, 4050B, 4053A, 4060A



- 1 NLA Nameplate, models w/ slide adjustment
- 2 E-126018 Lens Assembly, white
- 2 E-1260014 Lens Assembly, white, 4053A
- 3 E-53147 Shoulder Screw, 10 pk
- 4 E-25729A6 Slide Cover
- 5 E-24866A5 Slide Adjustment
- 6 E-53143 Shoulder Screw, 10 pk
- 6 E-531121 Shoulder Screw, 4050A,4050B, 10 pk
- 7 E-268331 Adjustment Knob, 6 position
- 8 E-37581 Nameplate, models w/ knob adjustment
- 9 E-126018 Lens Only, white
- 9 E-1260014 Lens Assy, white, 4053A,4050B
- 10 N/A Air Inlet Duct Assembly, right side
- 10 E-56379SV Air Inlet Duct Assembly, right side, 4050A,4050B
- 11 E-601921 Wire Nut, 5 pk
- 12 N/A Motor Assy, 2 speed, 6.5 amp
- 12 N/A Motor Assy, 2 speed, 3.5 amp, 4050A
- 13 E-30517 Motor Seal Gasket
- 14 E-24834A3 Foot Pedal, handle release

- 15 E-53097 Spring, foot pedal, 5 pk
- 16 E-48867 Spring Screw, 4036A,4036B,4053A,4060A
- 18 E-36263 Wheel Cover, 2 used
- 19 E-541334 Base Assy, white, 4036A,4036B,4053A,4060A
- 20 E-53117 Hood Spring
- 21 E-35958A Lamp Socket Assembly
- 22 E-40009A Bulb, 25 watt
- 23 E-5323814 Motor Mount Screw, 3 used, 10 pk
- 24 E-5323813 Motor Mount Screw, 1 used, 10 pk
- 25 N/A Air Inlet Duct Assy, left side
- 25 E-56380 Air Inlet Duct Assy, left side, 4053A,4050B
- 26 E-532282 Screw, lamp socket, 10 pk
- 27 E-5323814 Adjustment Screw, 2 used, 10 pk
- 28 E-53140 Clamp & Screw Set, 2 used, 6 pk
- 29 E-532287 Screw, bag ring, 2 used, 10 pk

- E-3640913 Switch, step-on, 13" leads
- E-37034 Retainer Spring, comm. bag adaptor
- E-5323811 Screw, adaptor retainer spring, 10 pk

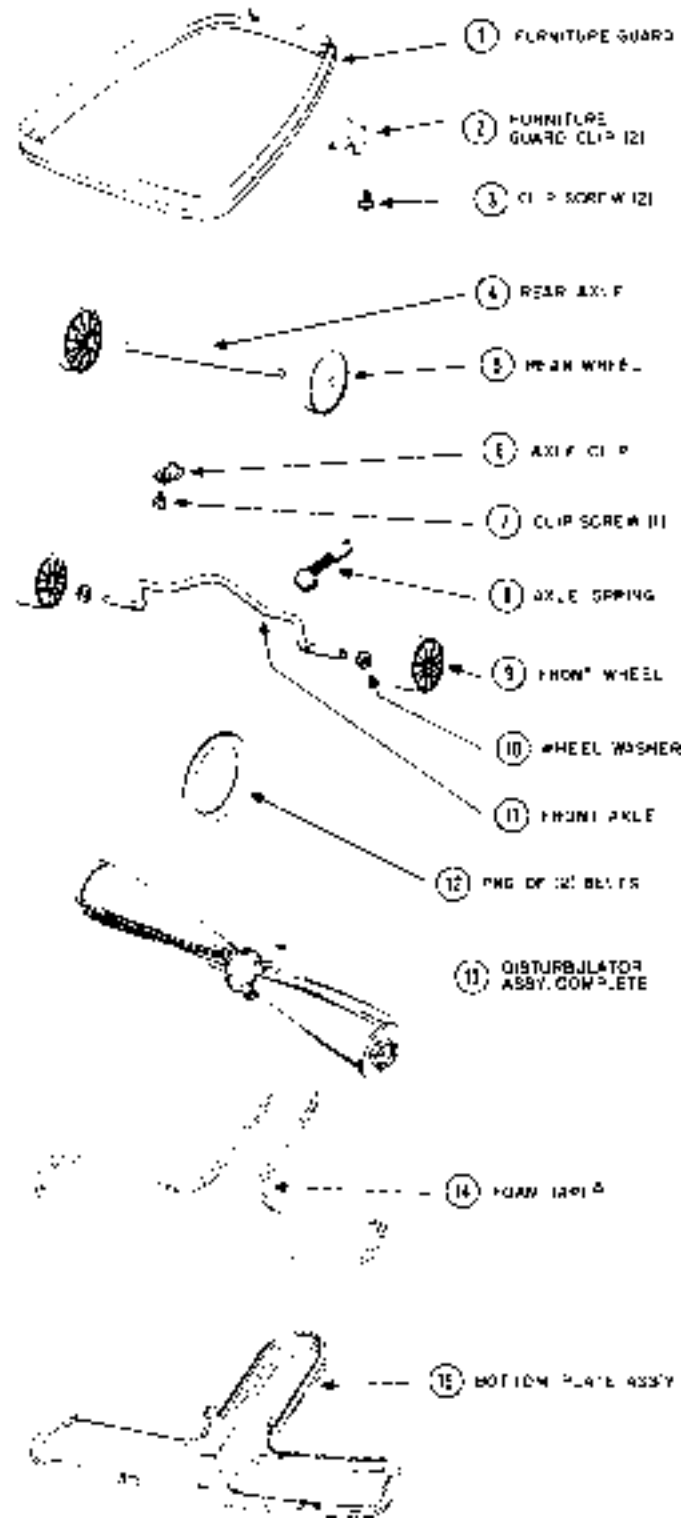
EUREKA UPRIGHTS

4000 Series

• LOWER CASTING ASSEMBLY (WIDE TRACK)

Models: 4036A, 4036B, 4040A, 4040B, 4050A, 4050B, 4053A, 4060A

- 1 N/A Furniture Guard, 40", white, 4040A, 4050A,4050B,4053A,4060A
- 1 E-2564816 Furniture Guard, 47", clear, 4036B, 4036B,4040B
- 2 E-25666 Bumper Clip
- 3 E-546691 Screw, bumper clip, 10 pk
- 3 E-532282 Screw, bumper clip, 4050A,4050B, 10 pk
- 4 E-47562 Rear Axle
- 5 E-358582 Rear Wheel
- 6 E-53111 Axle Clip, 5 pk
- 7 E-5323811 Screw, axle clip, 10 pk
- 7 E-5322810 Screw, axle clip, 4050A,4050B, 10 pk
- 8 E-530762 Spring, front axle, 6 pk
- 9 E-35859A1 Front Wheel
- 10 E-53110 Washer, wheel, 10 pk
- 11 E-35947A Axle, front
- 12 E-52100 Belt, 2 pack
- 12 E-30563A Belt, sold each
- 13 E-53273 Brush Roll, VG I, 16", hex end
- 13 E-53271 Brush Roll, VG II, 16", hex end, w/ ball bearings
- 14 E-465384 Foam Tape, bottom plate
- 15 E-25672A Bottom Plate Assembly

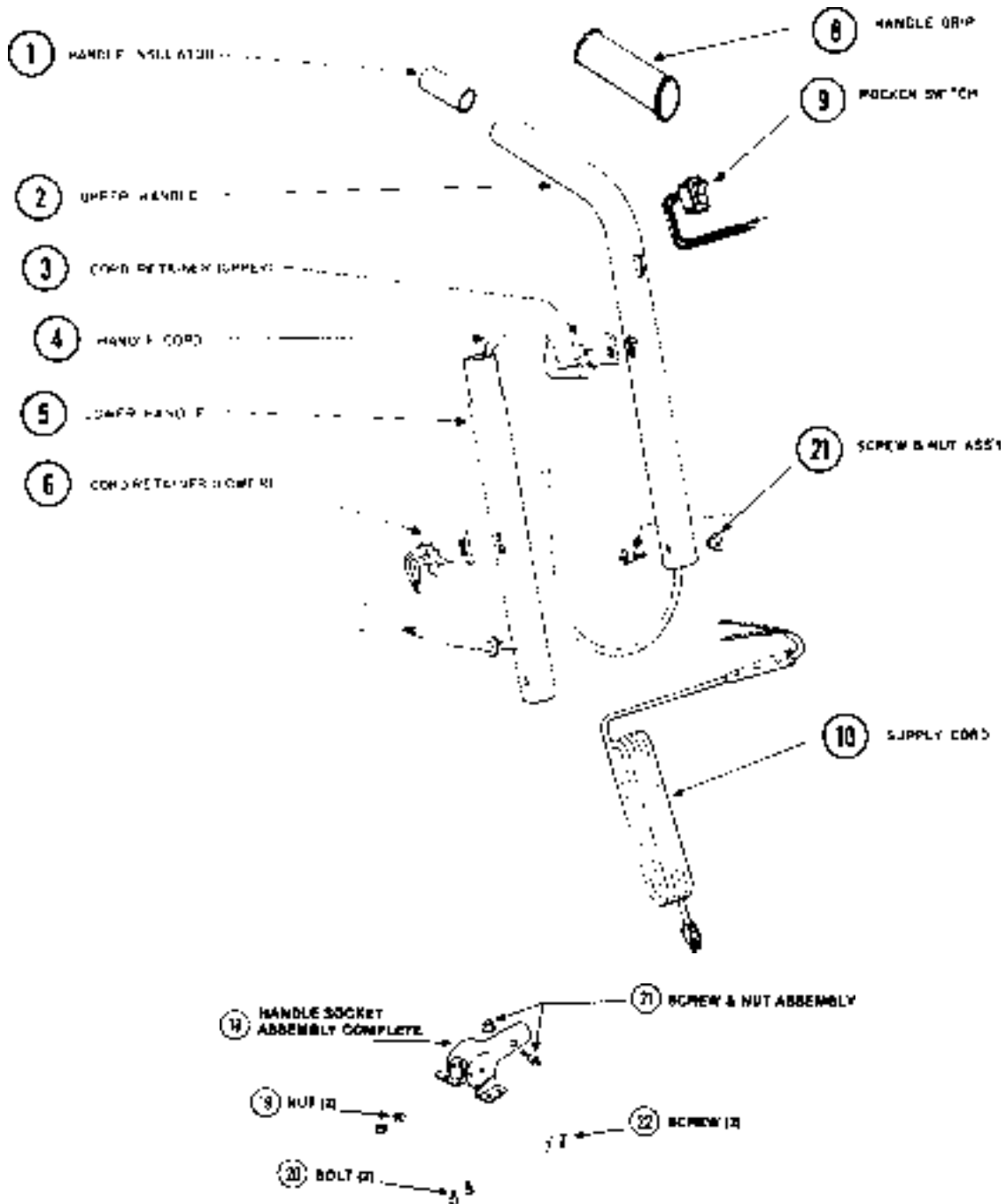


EUREKA UPRIGHTS

4000 Series

• HANDLE ASSEMBLY

Models: 4036A, 4036B, 4040A, 4040B, 4050A, 4050B, 4053A, 4060A



- | | | | | | | | | | |
|----|-------|----------|-------|------------------------------------|----|-------|-----------|-------|--|
| 1 | | E-48750 | | Handle Insulator | 10 | | E-252426 | | Cord, 30 ft, white, molded fitting |
| 2 | | E-127952 | | Upper Handle | 18 | | E-540921 | | Handle Socket & Foot Pedal Kit, white |
| 3 | | N/A | | Upper Cord Retainer, quick release | 18 | | E-540922 | | Handle Socket & Foot Pedal Kit, chrome |
| 4 | | N/A | | Handle Cord, 3 wire | 19 | | E-532135 | | Hex Nut, 2 used, 10 pk |
| 5 | | E-127942 | | Lower Handle | 20 | | E-53145 | | Bolt, 10 pk |
| 6 | | N/A | | Lower Cord Retainer | 21 | | E-531981 | | Screw & Nut Assembly, 6 pk |
| 8 | | E-352938 | | Handle Grip, white | 22 | | E-5323814 | | Screw, 10 pk |
| 9 | | E-360564 | | Switch, 2 speed, snap-in | | | E-S20382 | | Switch Removal Tool |
| 10 | | E-252426 | | Cord, 20 ft, white, molded fitting | | | | | |