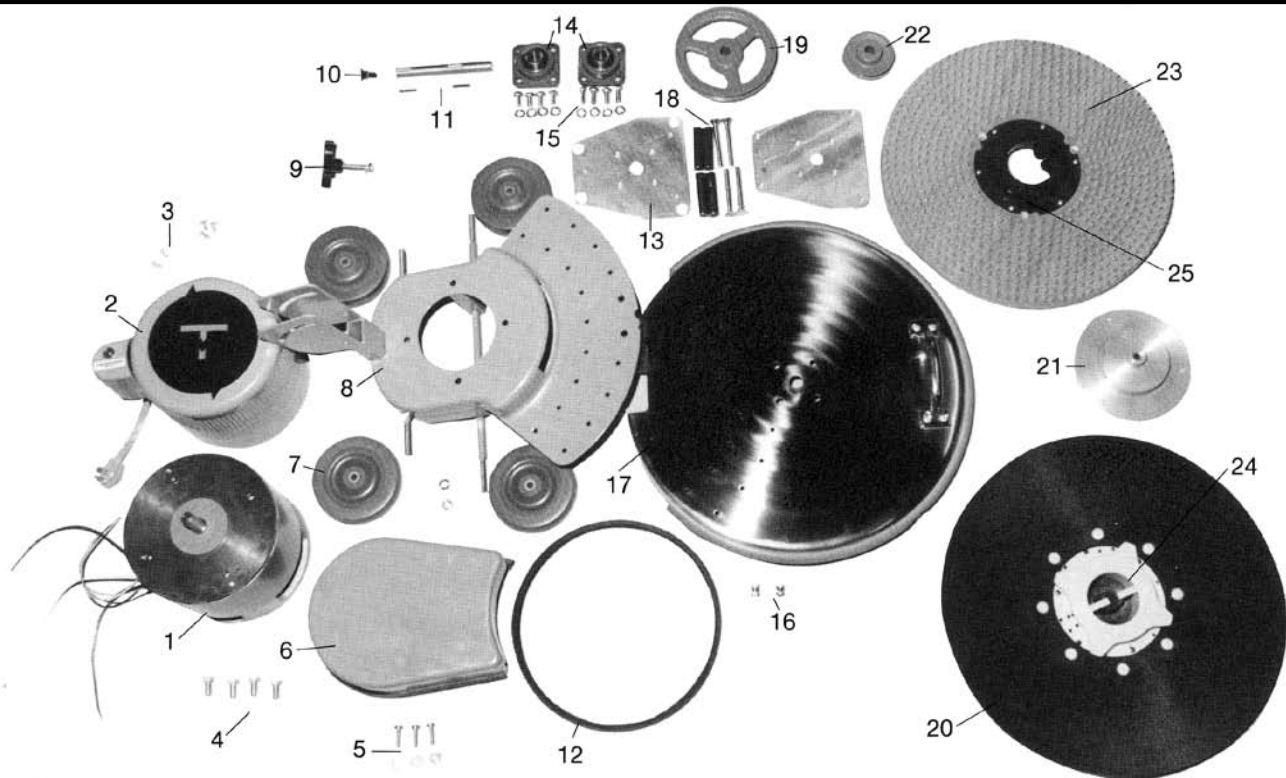


ELKY PRO

FLOOR MACHINE / BURNISHER

Model: HL-17, HL-20, HL-1500

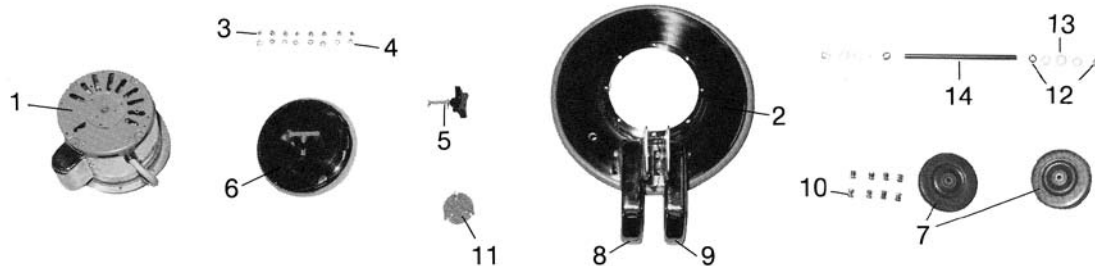
Models After February 1996



High Speed Floor Machine Base Assembly (HL-1500)

- 1..... TM-1404..... Motor, 1500
- 2..... N/A..... Motor Cover, with cord
- 3..... TM-1406..... Screw, motor cover
- 4..... TM-1407..... Bolts, motor
- 5..... TM-1408..... Screw, belt cover
- 6..... TM-1409..... Belt Cover
- 7..... TM-1457..... Wheel
- 8..... TM-1410..... Motor Base Assembly
- 9..... TM-1459..... Adjusting Knob
- 10..... TM-1411..... Screw, shaft
- 11..... TM-1412..... Drive Shaft, w/ two keys
- 12..... TM-1413..... Drive Belt

- 13..... TM-1414..... Pulley Plate
- 14..... TM-1415..... Box Bearing
- 15..... TM-1416..... Screw & Nut, box bearing
- 16..... TM-1417..... Screw & Nut, base assembly
- 17..... TM-14181500..... Apron, w/ bumper & handle
- 18..... TM-1419..... Screw & Support, pulley plate
- 19..... TM-14201500..... Drive Pulley
- 20..... TM-1421..... Flexible Pad Holder
- 21..... N/A..... Aluminum Casting
- 22..... TM-14231500..... Motor Pulley
- 23..... N/A..... Pad Holder, wood
- 24..... N/A..... Screw included with #25
- 25..... COM-792450..... The Big Mouth, centerhole, screw included



Floor Machine Base Assembly (HL-17, HL-20)

- 1..... N/A..... Motor & Gear Unit
- 2..... TM-1461..... Base, w/o wheel housings
- 3..... TM-1455..... Screw, gear unit
- 4..... N/A..... Lock Washer, gear unit
- 5..... TM-1459..... Handle Adjusting Knob
- 6..... TM-1458..... Motor Dust Cover
- 7..... TM-1457..... Wheel
- 8..... TM-148617..... Wheel Housing, left, HL-17
- 8..... TM-148620..... Wheel Housing, left, HL-20

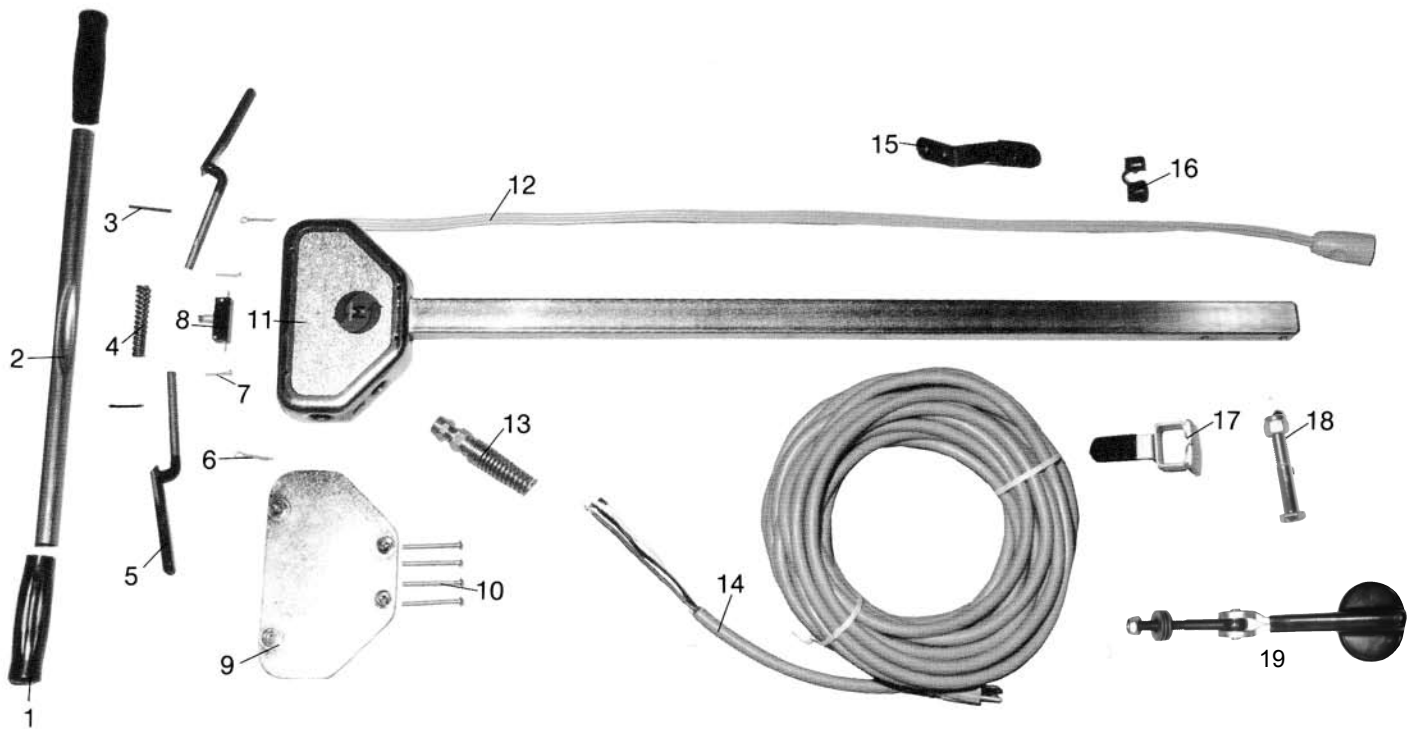
- 9..... TM-148517..... Wheel Housing, right, HL-17
- 9..... TM-148520..... Wheel Housing, right, HL-20
- 10..... TM-1460..... Screw, Nut, Washer, wheel housing
- 11..... TM-1456..... Spacer & 3 Screws, dust cover
- 12..... TM-146917..... Axle Cap & Spring Washer, HL-17
- 12..... TM-146920..... Axle Cap & Spring Washer, HL-20
- 13..... TM-147017..... Washers, axle, HL-17
- 13..... TM-147020..... Washers, axle, HL-20
- 14..... TM-146717..... Axle, wheel, HL-17
- 14..... TM-146720..... Axle, wheel, HL-20

ELKY PRO

FLOOR MACHINE / BURNISHER

Model: HL-17, HL-20, HL-1500

Models After February 1996



Floor Machine Handle Assembly (HL-17, HL-20, HL-1500)

- | | | | | | |
|---------|--------------|-------------------------|---------|--------------|-----------------------------|
| 1..... | TM-1435..... | Handle Grip | 11..... | TM-1445..... | Handle Tube, w/ switch case |
| 2..... | TM-1440..... | Handle Rod | 12..... | TM-1429..... | Machine Motor Cord & Plug |
| 3..... | TM-1426..... | Drive Pins, handle rod | 13..... | TM-1431..... | Strain Relief |
| 4..... | TM-1401..... | Spring, switch lever | 14..... | TM-1430..... | Trailing Cord |
| 5..... | TM-1402..... | Switch Lever, contoured | 15..... | TM-1450..... | Cord Holder |
| 6..... | TM-1427..... | Cotter Pin | 16..... | TM-1441..... | Strain Relief |
| 7..... | TM-1428..... | Screw, switch | 17..... | TM-1443..... | Sliding Handle Lock |
| 8..... | TM-1403..... | Switch | 18..... | TM-1444..... | Thru Bolt & Nut, for handle |
| 9..... | TM-1433..... | Back Plate | 19..... | TM-1489..... | Kick lock |
| 10..... | TM-1432..... | Screw, back plate | | | |

3 WAYS TO ORDER:
CALL: 1-800-VAC-SHOP
FAX: 847-647-0534
WEB: www.hescoinc.com

