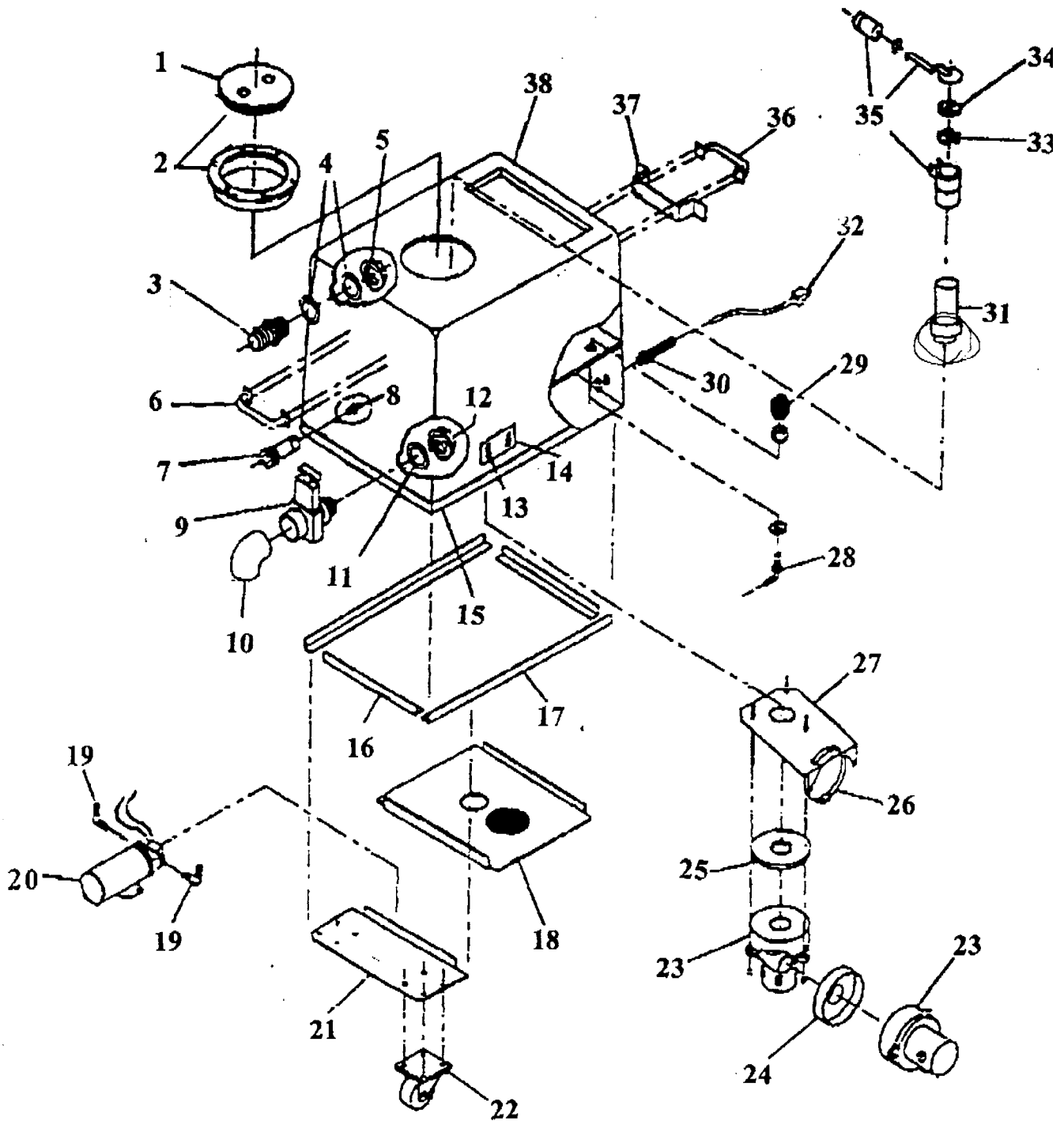


# ELKY PRO

# EXTRACTORS

Model: COM-1008



Model: COM-1008

---

- 2..... COM-TCL448.....Deck lid, 2-piece
- 3..... COM-198373.....Adapter, 1.5" male
- 4..... COM-198927.....Gasket, thick
- 5..... COM-198925.....Locknut
- 6..... COM-198025.....Handle
- 7..... COM-198116.....QC-#2 male
- 8..... COM-198006.....Hose
- 9..... COM-198301.....Dump valve
- 10..... COM-198302.....Elbow dump
- 11..... COM-198927.....Gasket, thick
- 12..... COM-198925.....Locknut
- 13..... COM-198153.....Switch, rocker
- 14..... COM-198311A.....Plate, switch 2 hole
- 15..... COM-198014.....Bumper
- 16..... COM-198590A.....Rail, short
- 17..... COM-198589A.....Rail, long
- 18..... COM-198179A.....Bottom plate, optional
- 19..... COM-198944.....Elbow, pump
- 20..... COM-TCP100.....Pump, 100 psi
- 21..... COM-198588A.....Base
- 22..... COM-198321.....Caster plate
- 23..... COM-198307.....Vac motor - 2 stage
- 24..... COM-198758.....Adapter vac motor
- 25..... COM-198395.....Gasket, vac motor
- 26..... COM-198638.....Clamp, screw
- 27..... COM-198672A.....Plate, motor mount vac
- 28..... COM-198935.....Elbow
- 29..... COM-198315.....Screen clean water
- 30..... COM-198928.....Connector, strain relief
- 31..... COM-198823A.....Stack, vac 5 gallon
- COM-198824A.....Stack, vac 8 gallon
- COM-198825A.....Stack, vac 12 gallon
- COM-198826A.....Stack, vac 15 gallon
- 32..... COM-198318.....Cord, electric 25"
- 33..... COM-1982763.....Screen, vac stack
- 34..... COM-198274.....Filter, vac stack
- 35..... COM-198576A.....Shut off valve
- 36..... COM-1989025.....Handle
- 37..... COM-198313A.....Bracket, electric cord
- 38..... COM-195102A.....Cabinet, f/g 5 gallon
- COM-195105A.....Cabinet, f/g 8 gallon
- COM-195106A.....Cabinet, f/g 12 gallon
- COM-195107A.....Cabinet, f/g 15 gallon