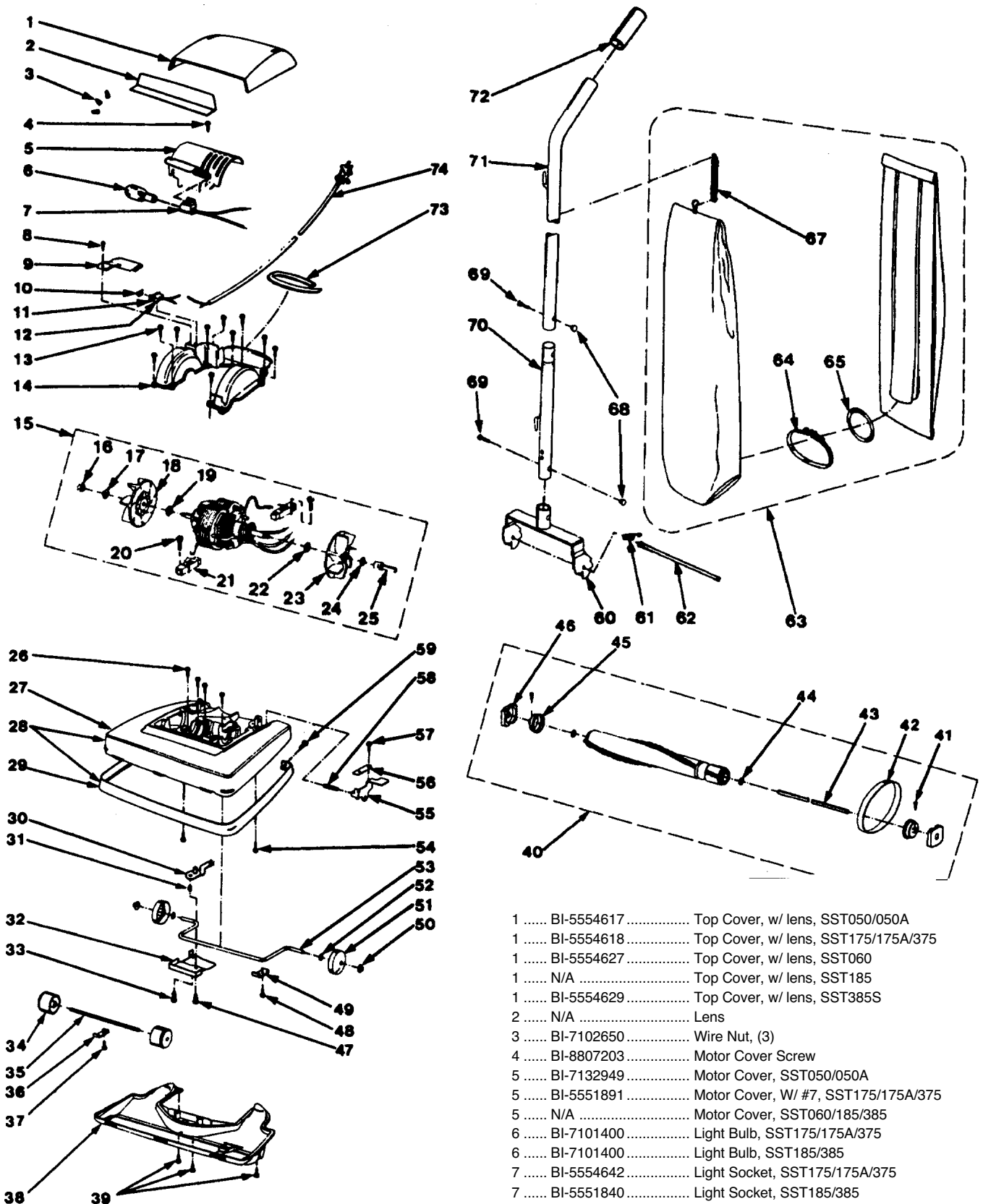


Model: SST-050 / SST-050A / SST-175 / SST-175A / SST-375



- 1 BI-5554617 Top Cover, w/ lens, SST050/050A
- 1 BI-5554618 Top Cover, w/ lens, SST175/175A/375
- 1 BI-5554627 Top Cover, w/ lens, SST060
- 1 N/A Top Cover, w/ lens, SST185
- 1 BI-5554629 Top Cover, w/ lens, SST385S
- 2 N/A Lens
- 3 BI-7102650 Wire Nut, (3)
- 4 BI-8807203 Motor Cover Screw
- 5 BI-7132949 Motor Cover, SST050/050A
- 5 BI-5551891 Motor Cover, W/ #7, SST175/175A/375
- 5 N/A Motor Cover, SST060/185/385
- 6 BI-7101400 Light Bulb, SST175/175A/375
- 6 BI-7101400 Light Bulb, SST185/385
- 7 BI-5554642 Light Socket, SST175/175A/375
- 7 BI-5551840 Light Socket, SST185/385

8	N/A	Screw Wiring Cover	41	N/A	Screw, floor brush cup, SST185/385
9	BI-5550809	Wiring Cover	42	BI-232026	Drive Belt, pkg of 2, SDB-2
10	BI-5550796	Mylar Dust Shield	43	N/A	Shaft
11	N/A	Rubber Dust Shield	44	BI-5554564	Washer, (2)
12	BI-5550455	Switch	45	N/A	Cup, floor brush, (2)
13	BI-8807203	Blower Cover Screws, (11)	45	N/A	Cup, floor brush, SST060/185/385
14	BI-5550137	Blower Cover, w/ gasket	46	N/A	End Cap, (2)
14	BI-5550137	Blower Cover, w/ gasket, 060/185/385	47	BI-8807203	Screw
15	BI-5552789	Motor Complete, SST175/050	48	BI-8807035	Retainer Screw
15	BI-5552794	Motor Complete, SST175A/050A	49	BI-7106908	Retainer
15	BI-5552797	Motor Complete, SST375/060	50	BI-5554640	Wheel Cap, (2)
15	BI-5552799	Motor Complete, SST185/385	51	BI-5554645	Rear Wheel, (2)
16	BI-5550304	Nut	52	BI-5554561	Washer, (2)
17	BI-2809064	Fan Washer, right hand	53	N/A	Shaft, rear wheel
18	BI-5551006	Suction Fan Kit, right hand	54	BI-5550008	Top Cover Screw, (2)
19	BI-5550823	Shoulder Washer, right hand	55	BI-5550762	Handle Release Pedal
20	BI-5551382	Carbon Brush Screws, (2)	56	BI-7106904	Pedal Shaft Retainer
21	BI-5550749	Carbon Brush Assy, set of 2	57	BI-8807035	Handle Release Screw
22	BI-8809063	Shoulder Washer, left hand	58	BI-7100122	Pedal Shaft
23	BI-5551005	Suction Fan Kit, left hand	59	BI-8806140	Rivet, (2)
24	BI-2809062	Fan Washer, left hand	60	BI-5553120	Yoke
25	BI-5550436	Belt Pulley	60	N/A	Yoke, SST060/185/385
26	BI-5553170	Field Screws, (4)	61	BI-7108436	Pedal Tension Spring
27	BI-5552757	Chassis/Motor Module Assy, SST050, w/ #5,13,14,15,29,73	62	BI-7100123	Trunnion Arm Shaft
27	N/A	Chassis/Motor Module Assy, SST050A w/ #5,13,14,15,29,73	63	N/A	Dust Bag Assy, SST050/050A
27	BI-5552759	Chassis/Motor Module Assy, SST175, w/ #5,13,14,15,29,73	63	BI-5550214	Dust Bag Assy, SST175/175A
27	BI-5552758	Chassis/Motor Module Assy, SST175A w/ #5,13,14,15,29,73	63	BI-5550210	Dust Bag Assy, SST375
27	N/A	Chassis/Motor Module Assy, SST375, w/ #5,13,14,15,29,73	63	BI-5550245	Dust Bag Assy, SST060,185
27	BI-5552778	Chassis/Motor Module Assy, SST060 w/ #4,10,11,12,26,66	63	BI-5550245	Dust Bag Assy, SST385
27	BI-5552779	Chassis/Motor Module Assy, 185/385	64	BI-5550410	Dust Bag Strap Assy
28	BI-5551569	Chassis, w/ bumper, SST050/050A	65	BI-5554606	Garter Spring
28	BI-5551570	Chassis, w/ bumper, SST175/175A/375	66	BI-32025	Disposable Paper Bag, pkg of 3, SUB1
28	BI-5551581	Chassis, w/ bumper, SST060	67	BI-5550194	Bag Tension Spring
28	BI-5551582	Chassis, w/ bumper, SST185/385	67	BI-5550194	Bag Tension Spring, SST060/185/385
29	N/A	Bumper	68	BI-5552724	T Nut, (2)
30	N/A	Cam Lever, SST175/175A/375	69	BI-5550065	Handle Tube Screw, (2)
31	BI-5550172	Spacer, SST175/175A/375	69	BI-5550065	Handle Tube Screw, SST060/185/385
32	N/A	Cam Retaining Plate, SST175/175A/375	70	BI-5550783	Lower Handle Tube
33	BI-8807035	Screw, SST175/175A/375	70	N/A	Lower Handle Tube, SST185,385
34	BI-5550343	Front Wheel, (2)	71	N/A	Upper Handle Tube, SST050/050A
35	N/A	Shaft, front wheel	71	BI-5550803	Upper Handle Tube, w/ #72, SST175/ 175A/375
36	BI-7106908	Retaining Plate	71	BI-5550807	Upper Handle Tube, SST060/185/385
37	BI-8807035	Retaining Screw	72	N/A	Hand Grip
38	BI-5550661	Access Plate, SST175/175A/050/050A	72	BI-5550818	Hand Grip, SST060/185/385
38	BI-5550661	Access Plate, SST375/185/385	73	BI-5554691	Bag Assy Gasket
39	BI-8807203	Screw, access plate	74	BI-5550041	Power Cord, SST050/050A
40	N/A	Floor Brush, complete	74	BI-5550041	Power Cord, SST175/175A
41	N/A	Screw, floor brush cup, (2), SST175/050/050A	74	N/A	Power Cord, SST375
41	N/A	Screw, floor brush (2), SST175A/375	74	BI-5552645	Power Cord, SST060/185
41	BI-5553979	Screw, floor brush cup, SST060	74	BI-5552644	Power Cord, SST385
				BI-5550195	Wood Dowel, SST060/185/385
				BI-5550567	Floor Brush, w/ strip, SST060/185/385