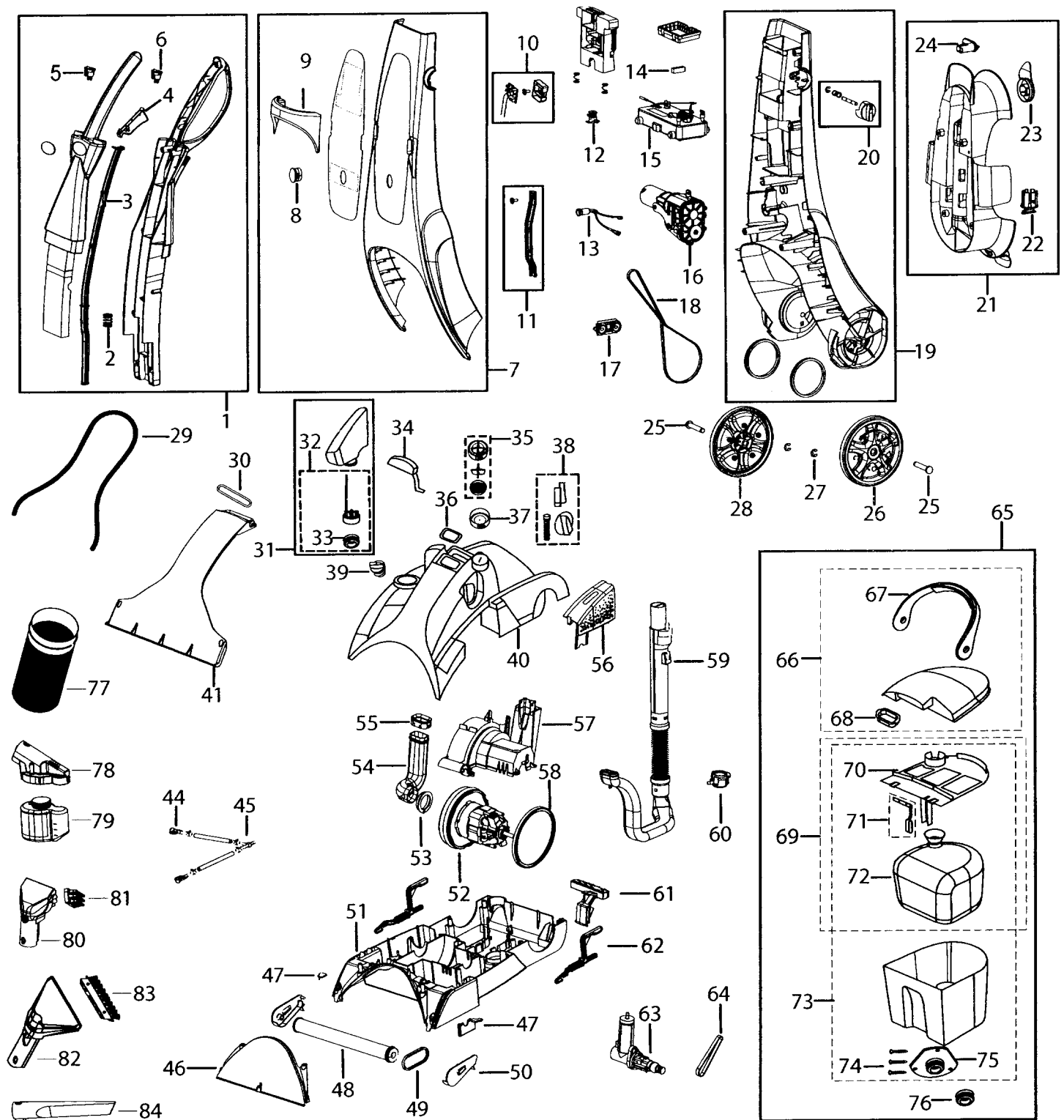


BISSELL

Upright

Model: 7950

DEEP CLEANER



- 1.....BI-2144496.....Upper handle assembly
- 2.....BI-2108422.....Spring, push rod
- 3.....BI-2147511.....Push rod
- 4.....BI-2139168.....Trigger
- 5.....BI-2107210.....Switch, heater
- 6.....BI-6031268.....Switch, power
- 7.....BI-2144328.....Lower handle front
- 8.....BI-2107202.....Lens, light
- 9.....BI-2134330.....Carry handle
- 10.....BI-2101082.....Circuit board
- 11.....BI-2105602.....Linkage
- 12.....BI-2109592.....Trigger valve assembly
- 13.....BI-2105607.....Light assembly
- 14.....BI-2108550.....Heater support
- 15.....BI-2104503.....Heater, 700 watt
- 16.....BI-2105052.....Transmission
- 17.....BI-2106683.....Idler assembly
- 18.....BI-2100605.....Drive belt
- 19.....BI-2144327.....Lower handle back assembly
- 20.....BI-2130121.....Neutral knob assembly
- 21.....BI-2136776.....Hose rack assembly
- 22.....BI-2131524.....Tool holder
- 23.....BI-2131154.....Cord wrap
- 24.....BI-2131527.....Wand clip
- 25.....BI-2100170.....Axle
- 26.....BI-2149774.....Wheel, overmolded w/gear
- 27.....BI-2106215.....E-ring, wheel axle
- 28.....BI-2109774.....Wheel, overmolded
- 29.....BI-2103418.....Extruded gasket
- 30.....BI-2104052.....Seal, oval
- 31.....BI-2101785.....Shampoo bottle assembly
- 32.....BI-2101795.....Cap assembly, shampoo bottle
- 33.....BI-2106241.....Autoload overseal
- 34.....BI-2136988.....Diverter, medium cool gray
- 35.....BI-5556503.....Flow indicator assembly, cap, spinner, rotor
- 36.....BI-2114054.....Diverter gasket
- 37.....BI-2100489.....Flow indicator base
- 38.....BI-2145170.....Diverter knob assembly
- 39.....BI-2105108.....Automix knob gray
- 40.....BI-2145037.....Main housing, black metallic
- 41.....BI-2149876.....Window nozzle assembly, 6 row brush
- 44.....BI-2106107.....Spray tip
- 45.....BI-2102602.....T connector
- 46.....BI-2149851.....Clearview window
- 47.....BI-5559113.....Retainers, right and left
- 48.....BI-2101128.....Floor brush assembly, 6 row, orange
- 49.....BI-0150621.....Brush belt
- 50.....BI-2140054.....Pivot arms, right and left
- 51.....BI-2151171.....Base, w/window and 6 row org brush
- 52.....BI-0175972.....Vacuum motor
- 53.....BI-2104051.....Gasket, motor intake
- 54.....BI-2103161.....Short air duct
- 55.....BI-2104050.....Gasket, short air duct
- 56.....BI-2132999.....Belt cover, black metallic
- 57.....BI-2132984.....Motor cover
- 58.....BI-2104056.....Motor gasket
- 59.....BI-2153163.....Hose and grip assembly
- 60.....BI-2140710.....Autoload receiver
- 61.....BI-5559102.....Handle release pedal
- 62.....BI-2000010.....Elevator levers, right and left
- 63.....BI-2107181.....Pump assembly
- 64.....BI-0150628.....Pump belt
- 65.....NLA.....Tank assembly, complete
- 66.....BI-0154439.....Tank top assembly, w/handle
- 67.....BI-2034435.....Tank handle
- 68.....BI-2133501.....Lint screen, red
- 69.....BI-2140213.....Baffle bladder assembly
- 70.....BI-2130213.....Tank baffle and float assembly
- 71.....BI-2140325.....Float assembly
- 72.....BI-2100315.....Bladder
- 73.....BI-0159041.....Tank, baffle, bladder, float
- 74.....BI-2807075.....Screw
- 75.....BI-2107041.....Autoload assembly
- 76.....BI-2106241.....Autoload overseal
- 77.....BI-2103040.....Mesh bag
- 78.....BI-2152152.....Carpet protectant sprayer assembly
- 79.....BI-0464.....Carpet protectant cartridge, 4/case
- 80.....BI-2159155.....3" tough stair tool
- 81.....BI-2149156.....Brush for 3" tough stain tool
- 82.....BI-2109213.....4" upholstery tool
- 83.....BI-2030966.....Brush for 4" upholstery tool
- 84.....BI-2109148.....Crevice tool

NOT ILLUSTRATED

- BI-2102895.....cord set, 33', 3-wire, 17 gauge
- BI-2104448.....Wire harner, upper and lower
- BI-2807149.....Screw kit, linkage (3 pack)