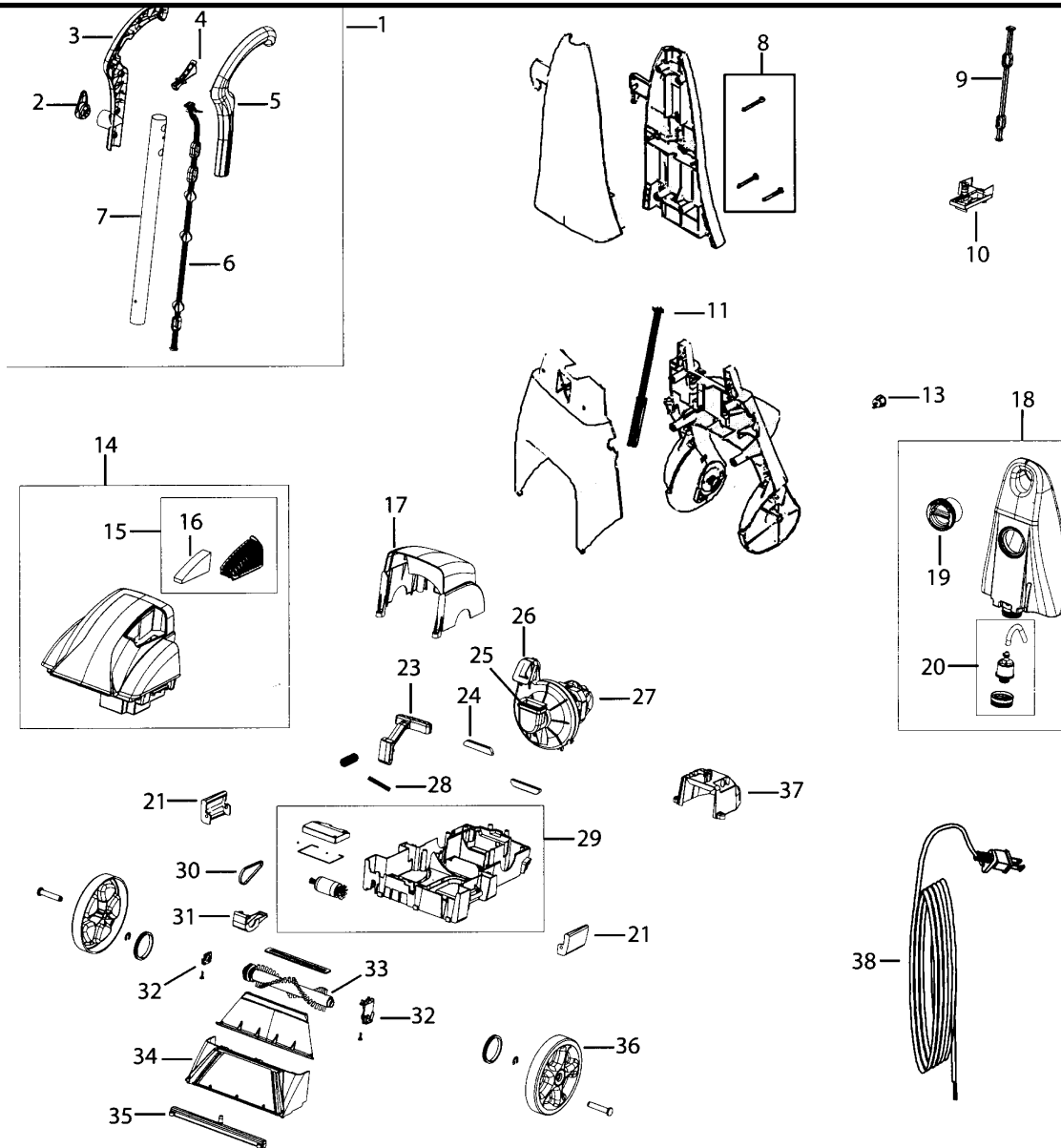


BISSELL

Lightweight Deep Cleaner

MODEL: 2070

QUICKSTEAMER



Index	Part No.	Description
1	BI-6032010	Handle assembly with cord strap
2	BI-2041107	Cord wrap
3	BI-2041104	Handle - right side
4	BI-2041103	Trigger
5	BI-2041108	Handle - left side
6	BI-2041106	Push rod - upper
7	BI-6037806	Tubing
8	BI-2035616	Handle screw kit (2+1)
9	BI-2041106	Upper push rod
10	BI-2041126	Receiver assembly
11	BI-2035614	Push rod - lower
13	BI-2041128	On/off switch
14	BI-6032008	Dirty water tank
15	BI-2041124	Exhaust vent panel with filter - dusk
16	BI-6037824	Foam filter
17	BI-2041125	Rear cover
18	NLA	Clean water tank - dusk
19	BI-2041112	Formula measuring cup
20	BI-2041111	Cap and insert

Index	Part No.	Description
21	BI-6037820	Tank latches - two
23	BI-2041114	Detent lever
24	BI-0106357	Rear motor support
25	BI-2041122	Motor intake gasket
26	BI-6037825	Motor outlet gasket
27	NLA	Complete motor assembly
28	BI-2041115	Metal detent dowel
29	BI-2041117	Base assembly with brush motor
30	NLA	Brush belt
31	BI-2041131	Brush cover
32	BI-2041130	Brush support bushing - right/left
33	BI-6032006	Brush assembly
34	BI-2041120	Front nozzle assembly
35	BI-2041118	Spray bar
36	BI-2041121	Wheel
37	BI-2041113	Motor cover
38	BI-6037803	Power cord