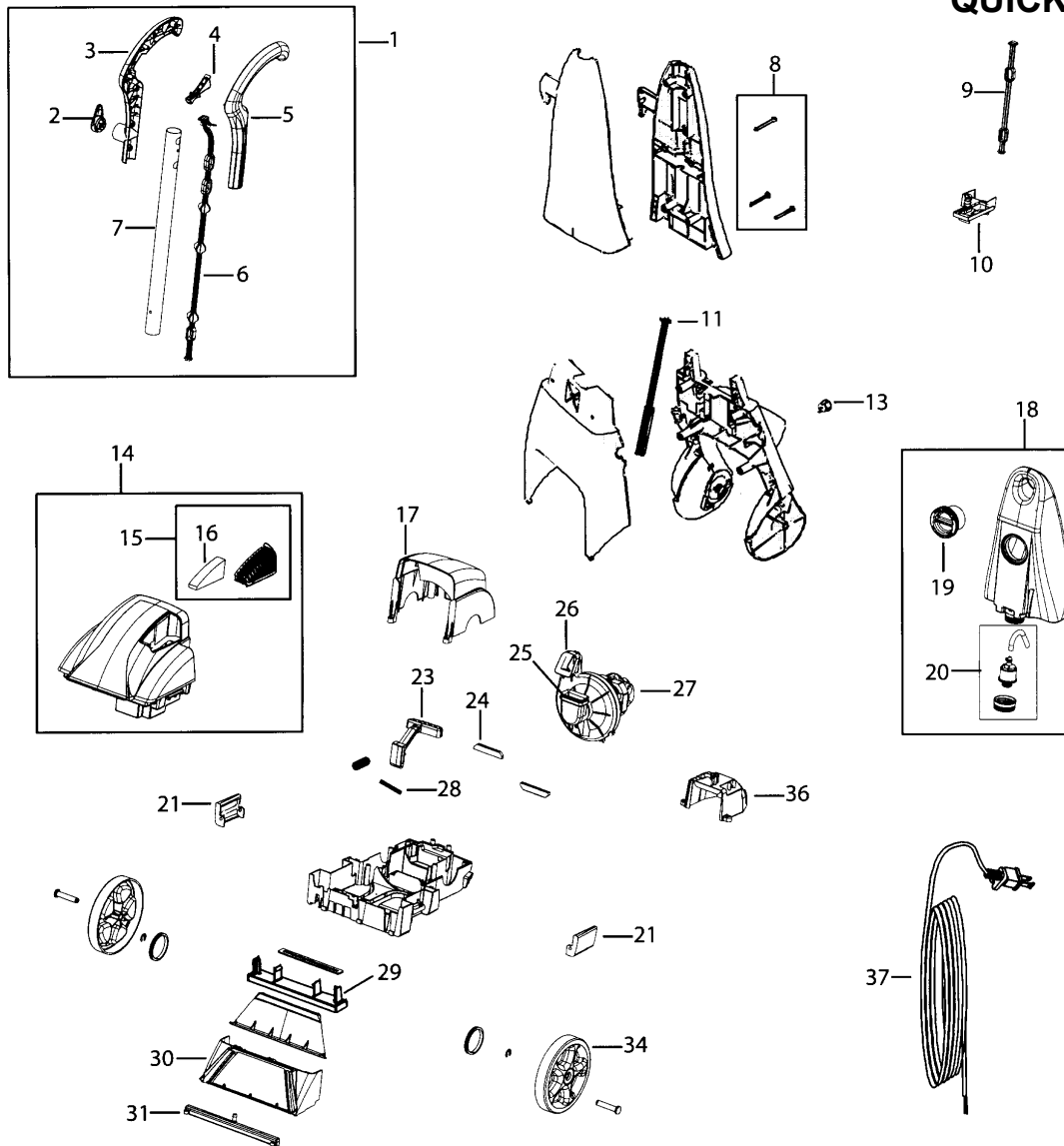


BISSELL

Lightweight Deep Cleaner

MODEL: 1960

QUICKSTEAMER



| Index | Part No. | Description |
|-------|------------|--|
| 1 | BI-2035601 | Handle assembly with cord wrap |
| 2 | BI-2041107 | Cord wrap |
| 3 | BI-2041104 | Handle - right side |
| 4 | BI-2041103 | Trigger |
| 5 | BI-2041108 | Handle - left side |
| 6 | BI-2041106 | Push rod - upper |
| 7 | BI-6037806 | Tubing |
| 8 | BI-2035616 | Handle screw kit (2+1) |
| 9 | BI-2041106 | Upper push rod |
| 10 | BI-2041126 | Receiver - assembly |
| 11 | BI-2035614 | Push rod - lower |
| 13 | BI-2041128 | On/off switch |
| 14 | BI-2035604 | Dirty water tank w/panel and filter - dusk |
| 15 | NLA | Exhaust vent panel with filter - teal |
| 15 | NLA | Exhaust vent panel with filter - dusk |
| 16 | BI-6037824 | Foam filter |
| 17 | BI-2041125 | Rear cover |
| 18 | NLA | Clean water tank - white - 19603 |

| Index | Part No. | Description |
|-------|------------|-------------------------------------|
| 18 | NLA | Clean water tank - dusk - 1960W |
| 19 | BI-2041112 | Formula measuring cup |
| 20 | NLA | Cap and insert |
| 21 | BI-6037820 | Tank latches - two |
| 23 | BI-2041114 | Detent lever |
| 24 | N/A | Rear motor support |
| 25 | NLA | Motor intake gasket |
| 26 | BI-6037825 | Motor outlet gasket |
| 27 | NLA | Complete motor assembly |
| 28 | BI-2041115 | Metal detent dowel |
| 29 | NLA | Brush - cross action - orange/white |
| 30 | BI-6037800 | Front nozzle assembly |
| 31 | BI-2035615 | Spray bar - orange |
| 34 | BI-6037802 | Wheel |
| 36 | BI-2041113 | Motor cover |
| 37 | BI-6037803 | Power cord |