

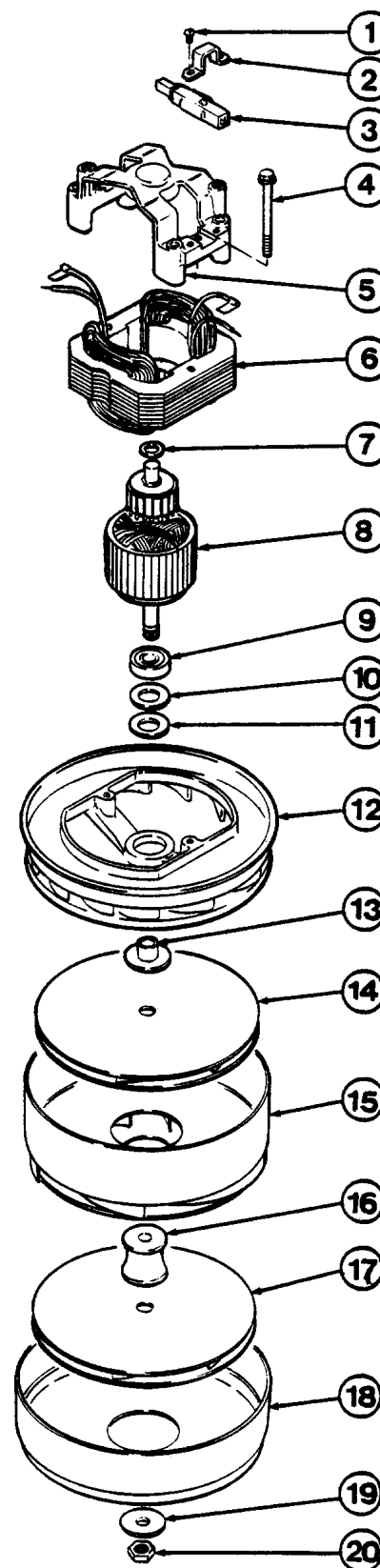
AMETEK / LAMB MOTORS

Motor Schematics

Model: 115982

5.7" Diameter, 120 volt, 2-stage, thru-flow

- 1 L-507950 Screw
- 2 L-105477 Clamp
- 3 L-333261 Brush Mechanism
- 4 L-5079956 Screw
- 5 L-22602 End Bracket
- 6 L-315982 Field
- 7 L-102473 Fiber Washer
- 8 L-215848 Armature
- 9 L-7076462 Ball Bearing
- 10 L-102272 Washer
- 11 L-415657 Felt Washer
- 12 L-458432 Bracket & Baffle
- 13 L-102976 Spacer
- 14 L-31337 Rotating Fan
- 15 L-31199 Stationary Fan
- 16 N/A Spacer
- 17 L-31337 Rotating Fan
- 18 L-403779 Fan Shell
- 19 L-202235 Washer
- 20 L-7491 Nut



Hesco stocks a full line of repair parts for every Ametek/Lamb motor. If you don't see a listing for a particular motor, ask your sales representative!